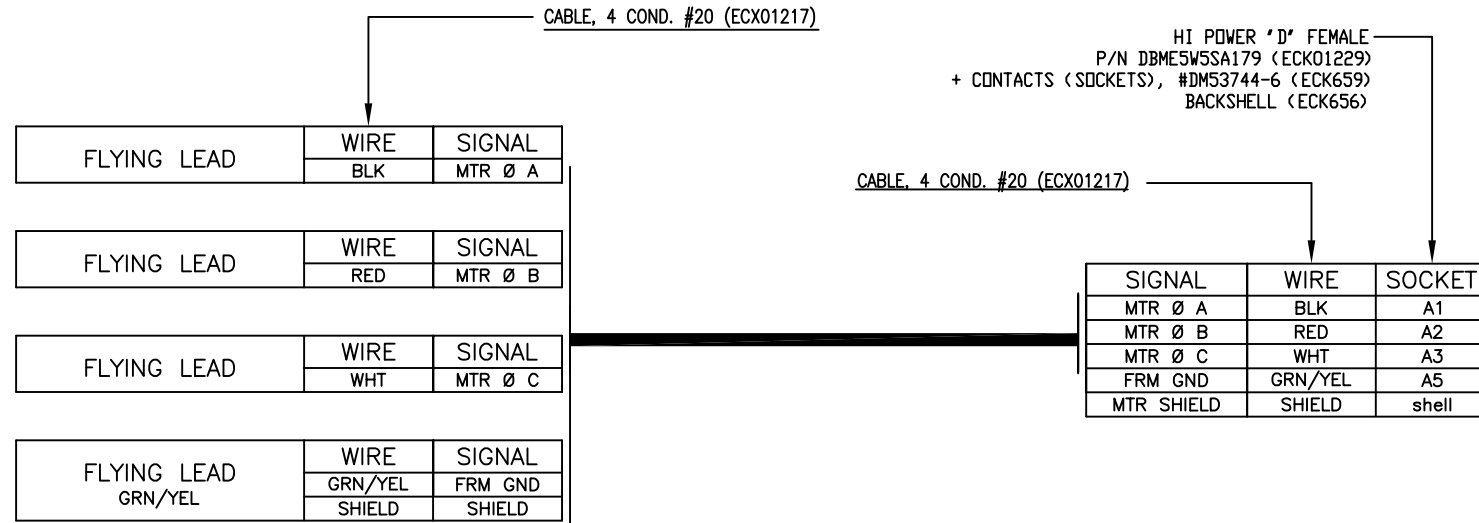


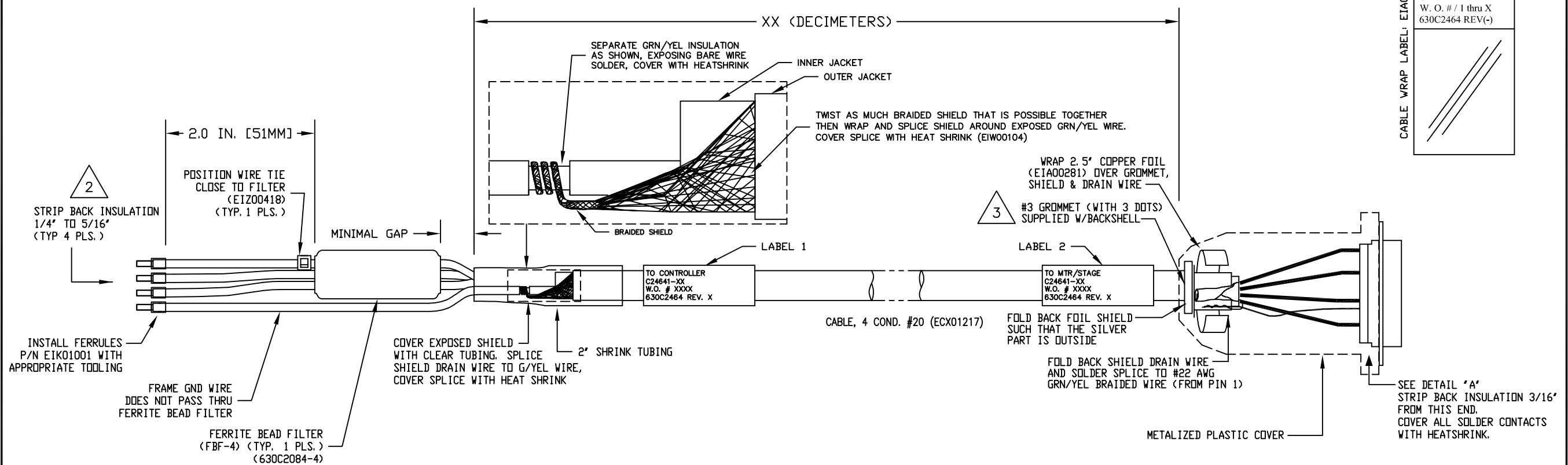
| REVISIONS | | | | |
|-----------|------|-------------|----|------|
| REV. | ZONE | DESCRIPTION | BY | DATE |
| | | | | |



LABELS FOR C24641 CABLES: (2) REQUIRED, (1 AT EACH END)

DESTINATION C24641-XX W. O. # / 1 thru X 630C2464 REV(-)

CABLE WRAP LABEL: ETA0013

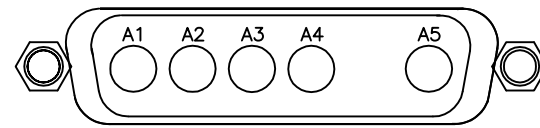


3 USE #3 GROMMET WITH 3 DOTS AS SHOWN BELOW WHICH IS SUPPLIED W/BACKSHELL



2 STRIP INSULATION BACK 1/4\"/>

1 XX (DECIMETER) X .328 = FT. STARTING LENGTH = XX FT + 1.25 FT. BOM VALUE = STARTING LENGTH + 1 FT.



SOLDER SIDE
DETAIL "A"

VIEWED FROM WIRE SIDE OF CONNECTOR
HI POWER 'D' FEMALE (ECK01229)

| | | | |
|---|-----------------|---|--|
| PART CODE: | | C24641-XX | C24641-1 TO -450 MAX LENGTH (DECIMETERS) |
| PROPRIETARY INFORMATION THIS DRAWING IS THE PROPERTY OF AEROTECH, INC. AND IS SUBMITTED IN CONFIDENCE AND SHALL NOT BE REPRODUCED NOR COPIED NOR DISCLOSED TO OTHERS UNDER PENALTY OF LAW. | | AEROTECH, INC. 101 Zeta Drive Pittsburgh, PA. 15238 (412)963-7470 www.aerotech.com | |
| TOLERANCES ON FRACTIONS DECIMALS ANGLES 0 TO 6 ± 1/32 .XX ± .01 ± 0-30' OVER 6 ± 1/16 .XXX ± .005 | | BRUSHLESS MOTOR CABLE 450 DECIMETERS (150') MAX LENGTH CABLE: BL MTR-FLB-5DU-MAX450DM | |
| RMS FINISH | EXCEPT AS NOTED | PART CODE | SIZE |
| DRAWN | MS | 4/14/14 | SEE ABOVE |
| CHECKED | AGS | 4/14/14 | C |
| APPD. | MS | 4/14/14 | 630C2464 |
| SCALE | NTS | FILE NAME | 630C2464-101.dwg |
| SHEET | 1 OF 1 | SHEET | 1 OF 1 |