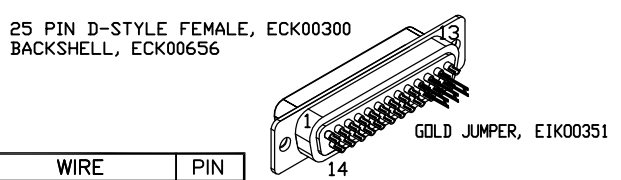
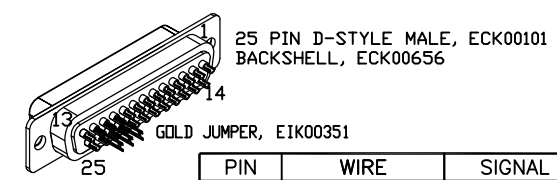


REVISIONS			
REV.	DESCRIPTION	DATE	DRAWN



PIN	WIRE	SIGNAL
13	-	-
12	#24 RED	MTR ØB
11	#24 BLK	MTR ØA
10	#24 GRY	MTR RETURN
9	-	-
8	-	-
7	YEL	CCW/-LMT
6	GRN	LMT COM
5	BLU	ENC COM
4	-	-
3	-	-
2	-	-
1	REMOVE PIN	REMOVE PIN
CASE	SHIELD	SHIELD
14	-	-
15	-	-
16	-	-
17	#24 VIO	ENC +5V
18	WHT	ID
19	ORN	CW/+LMT
20	-	-
21	-	-
22	Jumper	MTR RETURN
23	Jumper	MTR ØA
24	Jumper	MTR ØB
25	-	-

SIGNAL	WIRE	PIN
-	-	13
MTR ØB	#24 RED	12
MTR ØA	#24 BLK	11
MTR RETURN	#24 GRY	10
-	-	9
-	-	8
CCW/- LMT	YEL	7
LMT COM	GRN	6
ENC COM	BLU	5
-	-	4
-	-	3
-	-	2
KEY	KEY	1
SHIELD	SHIELD	CASE
-	-	14
-	-	15
-	-	16
ENC +5V	#24 VIO	17
ID	WHT	18
CW/+ LMT	ORN	19
-	-	20
-	-	21
MTR RETURN	Jumper	22
MTR ØA	Jumper	23
MTR ØB	Jumper	24
-	-	25

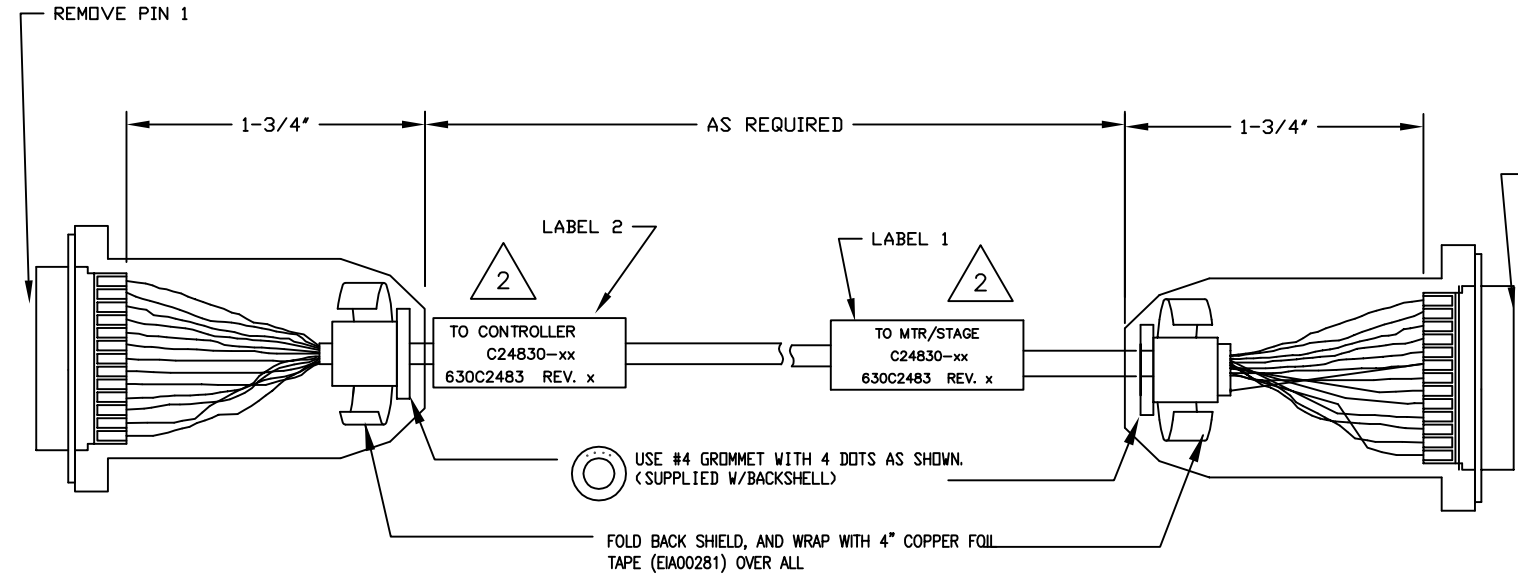
ECX01126
16 COND., #24x4, #26x12

UNUSED:
W/GRN, W/GRY, W/BLU,
BRN/W, W/BRN,
W/YEL, W/ORN

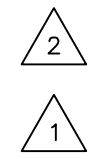
ADD GOLD JUMPER
EIK00351, 3 PLS.

ADD GOLD JUMPERS
EIK00351

INSERT KEY (ECK00785) INTO
PIN 1 (SECURE WITH EPOXY).



INSERT KEY (ECK00785) INTO
PIN 1 (SECURE WITH EPOXY).



2 LABEL EACH END OF CABLE WITH EIA00113

1 STARTING CABLE LENGTH SHOULD BE 6 IN LONGER THAN TOTAL LENGTH OF CABLE. LENGTH OF CABLE IS DESIGNATED BY THE (XX) IN CABLE NAME.

PROPRIETARY INFORMATION
THIS DRAWING IS THE PROPERTY
OF AEROTECH, INC. AND IS
SUBMITTED IN CONFIDENCE AND
SHALL NOT BE REPRODUCED NOR
COPIED NOR DISCLOSED TO OTHERS
UNDER PENALTY OF LAW.



TOLERANCES ON		
FRACTIONS	DECIMALS	ANGLES
0 TO 6 ± 1/32	.XX ± .01	± 0-30'
OVER 6 ± 1/16	.XXX ± .005	

C24830-xx (Lab to SM)
CABLE: SM & FB-25DU 25DU-HF-MAX200DM

RMS FINISH	✓	EXCEPT AS NOTED	PART CODE	SIZE	REV.
DRAWN	10/28/2014	JFM	C24830-xx	C	-
CHECKED	10/28/2014	TES	630C2483		
APPD.	10/28/2014	JFM	SCALE NTS	FILE NAME	630C248301.Dwg
			SHEET	1 OF 1	