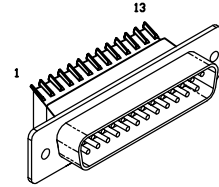


REV. DESCRIPTION		REVISIONS	DRAWN	DATE

25-PIN D, MALE, ECK00786  
BACKSHELL, ECK00656  
ADD SCREWLOCKS



PIN	WIRE	SIGNAL
13	-	-
12	WHT	CW/+LMT
11	-	-
10	-	-
9	-	-
8	-	-
7	-	-
6	-	-
5	-	-
4	BLU	ID
3	RED	ENC +5V
2	RED/BLK	ENC +5V
1	ORN	THERMISTOR
1	-	-
CASE	SHIELD	SHIELD
14	-	-
15	-	-
16	-	-
17	-	-
18	-	-
19	-	-
20	GRN	LMT COM
21	BLK	ENC COM
22	-	-
23	-	-
24	WHT/BLK	CCW/-LMT
25	-	-

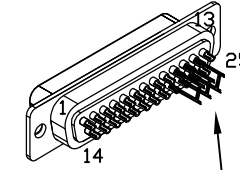
ECX01125  
8 COND., #26

UNUSED WIRES:  
None

ECX01124  
4 COND., #22

SIGNAL	WIRE	PIN
-	-	13
ØB	JMP TO PIN 24	12
ØA	JMP TO PIN 23	11
ØA, ØB RETURN	JMP TO PIN 22	10
-	-	9
-	-	8
CCW/-LMT	WHT/BLK	7
LMT COM	GRN	6
ENC COM	BLK	5
-	-	4
-	-	3
KEY	KEY	2
FRAME GND.	SHIELDS, & #22 GRN/YEL	1
-	-	14
-	-	15
-	-	16
ENC +5V	RED	17
ID	BLU	18
CW/+LMT	WHT	19
THERMISTOR	ORN	20
-	-	21
ØA, ØB RETURN	#22 WHT	22
ØA	#22 BLK	23
ØB	#22 RED	24
-	-	25

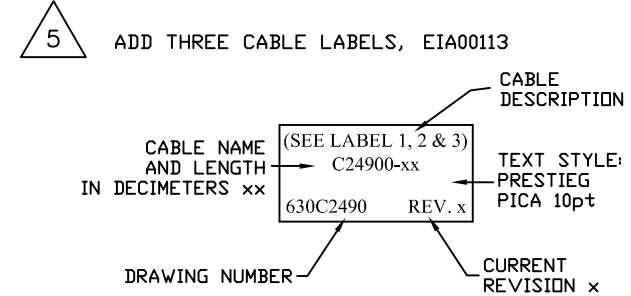
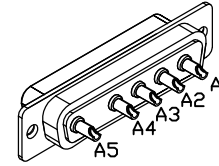
25-PIN D, FEMALE, ECK00300  
BACKSHELL, ECK00656  
JACKSOCKETS, ECK00129



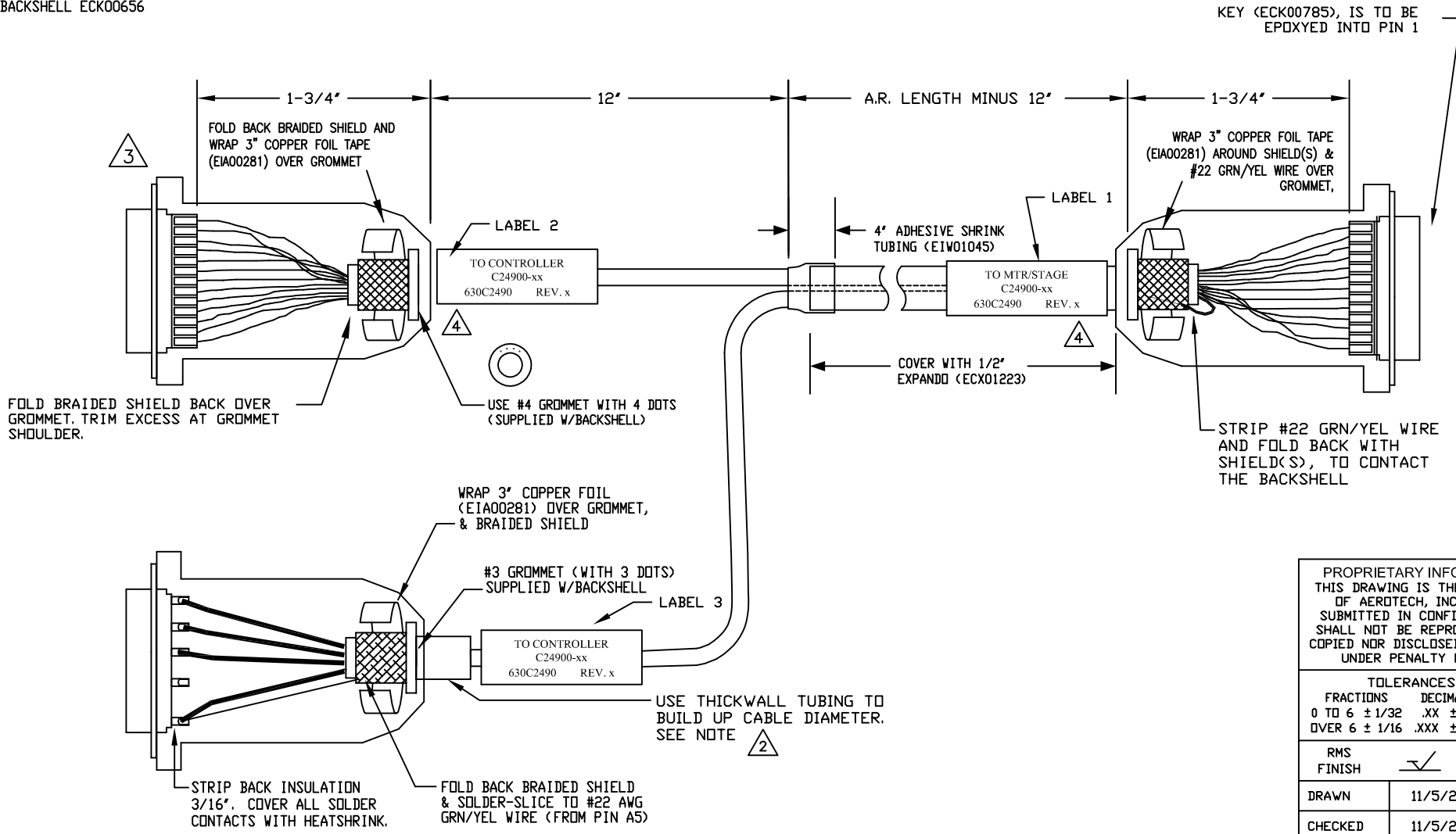
ADD GOLD JUMPER  
EIK00351, 3 PLS.

PIN	WIRE	SIGNAL
A5	#22 G/YEL	FRM/SHIELD
A4	-	-
A3	#20 WHT	Ø RETURN'S
A2	#22 RED	ØB
A1	#22 BLK	ØA

5 PIN MALE HIGH PWR 'D', ECK01236  
PINS, ECK00660, QTY. 5  
BACKSHELL ECK00656



- 5 ADD THREE CABLE LABELS, EIA00113
- 4 VERIFY GROMMET IS SECURED TIGHTLY AROUND CABLE. IF NECESSARY BUILD UP WITH SHRINK TUBING.
- 3 FOR CRIMP TOOL USE AMP HANDLE ASSY 58074-1 WITH AMP HEAD ASSY 58063-2
- 2 USE 2" LENGTHS OF THICK WALL HEATSHRINK TUBING TO BUILD UP CABLE DIAMETER FOR PROPER STRAIN RELIEFING. STRAIN RELIEFING MUST WITHSTAND 35 LB. PULL. CUT THICK WALL HEATSHRINK TUBING WITH CABLE CUTTER SUCH THAT ENDS ARE PERPENDICULAR TO CABLE AND CUT IS SMOOTH. THICK WALL HEATSHRINK TUBING: EIW00112, MAX INSIDE DIA = .750" (EXPANDED), MIN INSIDE DIA = .220" (RECOVERED) EIW00113, MAX INSIDE DIA = .400" (EXPANDED), MIN INSIDE DIA = .150" (RECOVERED)
- 1 STARTING CABLE LENGTH SHOULD BE 5 IN LONGER THAN TOTAL LENGTH OF CABLE. LENGTH OF CABLE IS DESIGNATED BY THE (XX) IN CABLE NAME.



KEY (ECK00785), IS TO BE EPOXYED INTO PIN 1

PROPRIETARY INFORMATION THIS DRAWING IS THE PROPERTY OF AEROTECH, INC. AND IS SUBMITTED IN CONFIDENCE AND SHALL NOT BE REPRODUCED NOR COPIED NOR DISCLOSED TO OTHERS UNDER PENALTY OF LAW.		AEROTECH, INC. 101 Zeta Drive Pittsburgh, PA. 15238 (412)963-7470 www.aerotech.com	
TOLERANCES ON FRACTIONS DECIMALS ANGLES 0 TO 6 ± 1/32 .XX ± .01 ± 0-30' OVER 6 ± 1/16 .XXX ± .005		<b>MPS SERIES STEPPER TO Npaq          FEEDBACK &amp; MOTOR CABLE          SM MTR &amp; FB-25DU 5DU-25DU-HF-MAX135M</b>	
RMS FINISH	EXCEPT AS NOTED	PART CODE	SIZE
DRAWN	11/5/2014 JFM	C24900-XX	C
CHECKED	11/5/2014 TES	<b>630C2490</b>	
APPD.	11/5/2014 JFM	SCALE NTS	FILE NAME 630C249001.Dwg
		SHEET	1 OF 1