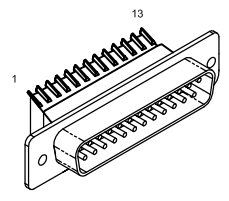


REV.		DESCRIPTION	DRAWN	DATE
A		ADDED ECO 69	JFM	8/28/2017

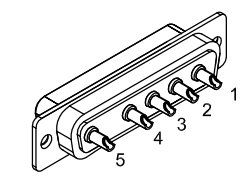
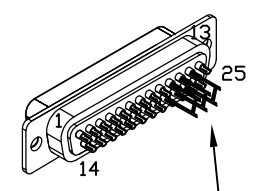
PIN	WIRE	SIGNAL
13	-	-
12	WHT	CW/+LMT
11	-	-
10	-	-
9	-	-
8	-	-
7	-	-
6	-	-
5	-	-
4	BLU	ID
3	RED	ENC +5V
	RED/BLK	
2	ORN	THERMISTOR
1	-	-
CASE	SHIELD	SHIELD
14	-	-
15	-	-
16	-	-
17	-	-
18	-	-
19	-	-
20	GRN	LMT COM
21	BLK	ENC COM
22	-	-
23	-	-
24	WHT/BLK	CCW/+LMT
25	-	-

SIGNAL	WIRE	PIN
-	-	13
ØB	JMP TO PIN 24	12
ØA	JMP TO PIN 23	11
ØA, ØB RETURN	JMP TO PIN 22	10
-	-	9
-	-	8
CCW/+LMT	WHT/BLK	7
LMT COM	GRN	6
ENC COM	BLK	5
-	-	4
-	-	3
KEY	KEY	2
FRAME GND.	SHIELDS, & #22 GRN/YEL	CASE
-	-	14
-	-	15
-	-	16
ENC +5V	RED	17
ID	BLU	18
CW/+LMT	WHT	19
THERMISTOR	ORN	20
-	-	21
ØA, ØB RETURN	#22 WHT	22
ØA	#22 BLK	23
ØB	#22 RED	24
-	-	25

25-PIN D, MALE, ECK00786
BACKSHELL, ECK00656
ADD SCREWLOCKS



25-PIN D, FEMALE, ECK00300
BACKSHELL, ECK00656
JACKSOCKETS, ECK00129



5 PIN MALE HIGH PWR "D", ECK01236
PINS, ECK00660, QTY. 5
BACKSHELL ECK00656

PIN	WIRE	SIGNAL
CASE	SHIELD	SHIELD
5	#22 G/YEL	FRAME
4	-	-
3	#22 WHT	Ø RETURN'S
2	#22 RED	ØB
1	#22 BLK	ØA

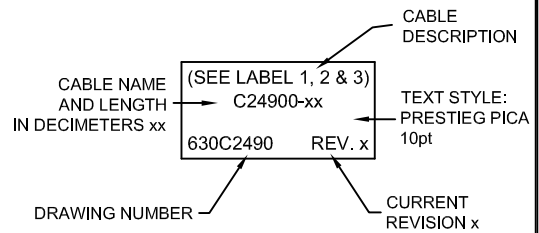
ECX01125
8 COND., #26

UNUSED WIRES:
None

ECX01124
4 COND., #22



ADD THREE CABLE LABELS, EIA00113



VERIFY GROMMET IS SECURED TIGHTLY AROUND CABLE. IF NECESSARY BUILD UP WITH SHRINK TUBING.



FOR CRIMP TOOL USE AMP HANDLE ASSY 58074-1 WITH AMP HEAD ASSY 58063-2



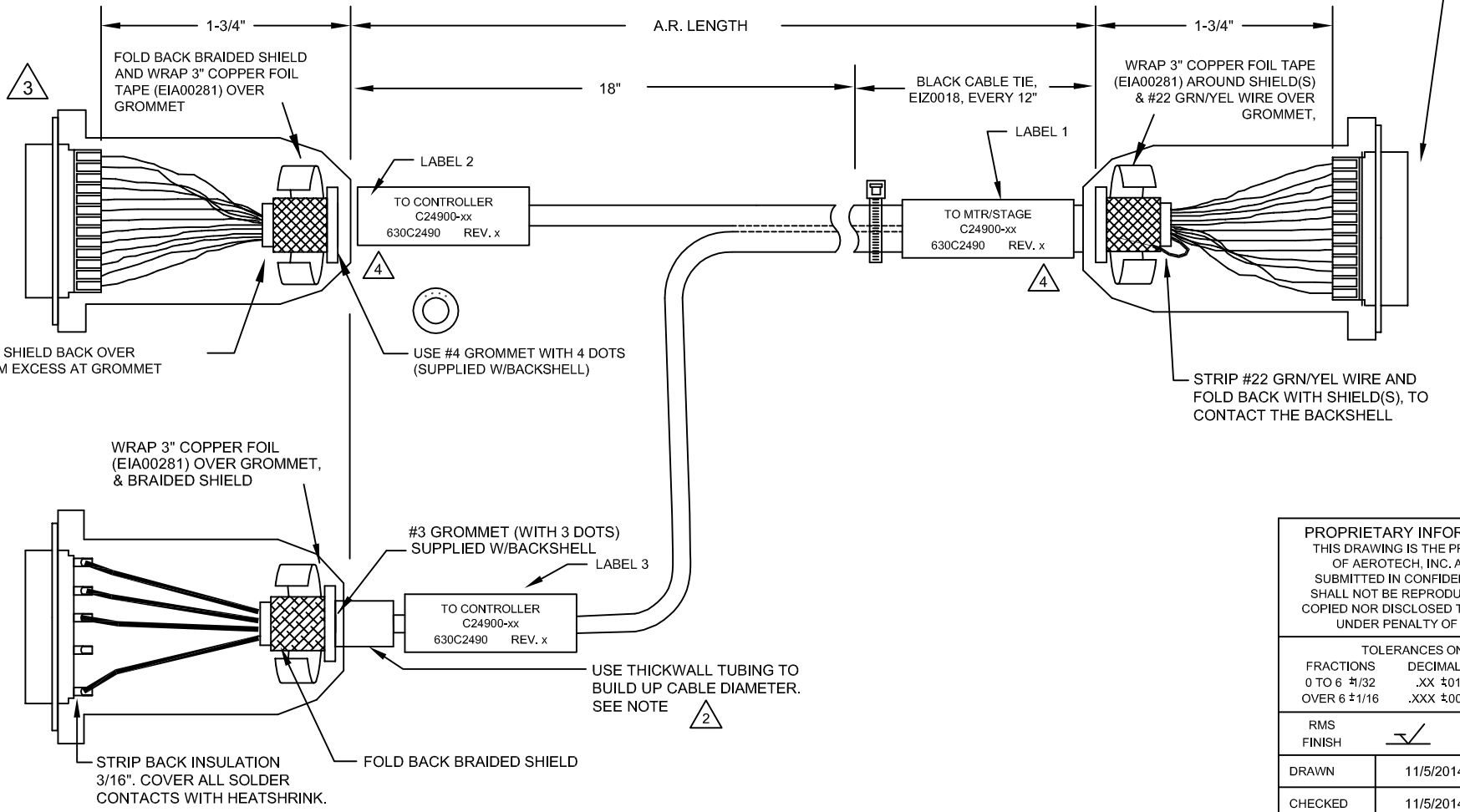
USE 2" LENGTHS OF THICK WALL HEATSHRINK TUBING TO BUILD UP CABLE DIAMETER FOR PROPER STRAIN RELIEFING. STRAIN RELIEFING MUST WITHSTAND 35 LB. PULL.

CUT THICK WALL HEATSHRINK TUBING WITH CABLE CUTTER SUCH THAT ENDS ARE PERPENDICULAR TO CABLE AND CUT IS SMOOTH.

THICK WALL HEATSHRINK TUBING:
EIW00112, MAX INSIDE DIA = .750" (EXPANDED), MIN INSIDE DIA = .220" (RECOVERED)
EIW00113, MAX INSIDE DIA = .400" (EXPANDED), MIN INSIDE DIA = .150" (RECOVERED)



STARTING CABLE LENGTH SHOULD BE 5 IN LONGER THAN TOTAL LENGTH OF CABLE. LENGTH OF CABLE IS DESIGNATED BY THE (XX) IN CABLE NAME.



PROPRIETARY INFORMATION
THIS DRAWING IS THE PROPERTY OF AEROTECH, INC. AND IS SUBMITTED IN CONFIDENCE AND SHALL NOT BE REPRODUCED NOR COPIED NOR DISCLOSED TO OTHERS UNDER PENALTY OF LAW.



AEROTECH, INC. 101 Zeta Drive
Pittsburgh, PA. 15238
(412)963-7470
www.aerotech.com

FRACTIONS	DECIMALS	ANGLES
0 TO 6 1/32	.XX ±01	± 0-30'
OVER 6 1/16	.XXX ±005	

RMS FINISH ✓ EXCEPT AS NOTED

DRAWN	11/5/2014	JFM
CHECKED	11/5/2014	TES
APPD.	11/5/2014	JFM

MPS SERIES STEPPER TO Npaq FEEDBACK & MOTOR CABLE			
SM MTR + FB-5D 25D-25D-3.5ARMS-HF47-MAX135DM			
PART CODE	SIZE	REV.	
C24900	C	A	
SCALE NTS		FILE NAME	SHEET
		630C2490.Dwg	1 OF 1