

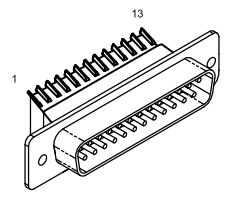
REV. DESCRIPTION		DRAWN	DATE
A	ADDED ECO 69	JFM	8/29/2017

PIN	WIRE	SIGNAL
13	-	-
12	WHT	CW/+LMT
11	-	-
10	-	-
9	-	-
8	-	-
7	-	-
6	-	-
5	-	-
4	BLU	ID
3	RED	ENC +5V
	RED/BLK	
2	ORN	THERMISTOR
1	-	-
CASE	SHIELD	SHIELD
14	-	-
15	-	-
16	-	-
17	-	-
18	-	-
19	-	-
20	GRN	LMT COM
21	BLK	ENC COM
22	-	-
23	-	-
24	WHT/BLK	CCW/-LMT
25	-	-

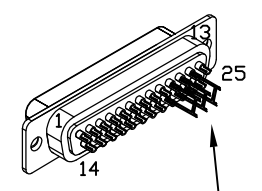
SIGNAL	WIRE	PIN
-	-	13
ØB	JMP TO PIN 24	12
ØA	JMP TO PIN 23	11
ØA, ØB RETURN	JMP TO PIN 22	10
-	-	9
-	-	8
CCW/-LMT	WHT/BLK	7
LMT COM	GRN	6
ENC COM	BLK	5
-	-	4
-	-	3
-	-	2
KEY	KEY	1
FRAME GND.	SHIELDS, & #22 GRN/YEL	CASE
-	-	14
-	-	15
-	-	16
ENC +5V	RED	17
ID	BLU	18
CW/+LMT	WHT	19
THERMISTOR	ORN	20
-	-	21
ØA, ØB RETURN	#22 WHT	22
ØA	#22 BLK	23
ØB	#22 RED	24
-	-	25

PIN	FERRULE	WIRE	SIGNAL
4	EIK01085	#22 WHT	MTR Ø C
3	EIK01085	#22 RED	MTR Ø B
2	EIK01085	#22 BLK	MTR Ø A
1	EIK01001	#22 GRN/YEL	SHIELD / FRM GND

25-PIN D, MALE, ECK00786
BACKSHELL, ECK00656
ADD SCREWLOCKS

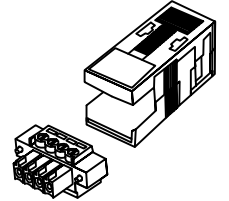


25-PIN D, FEMALE, ECK00300
BACKSHELL, ECK00656
JACKSOCKETS, ECK00129

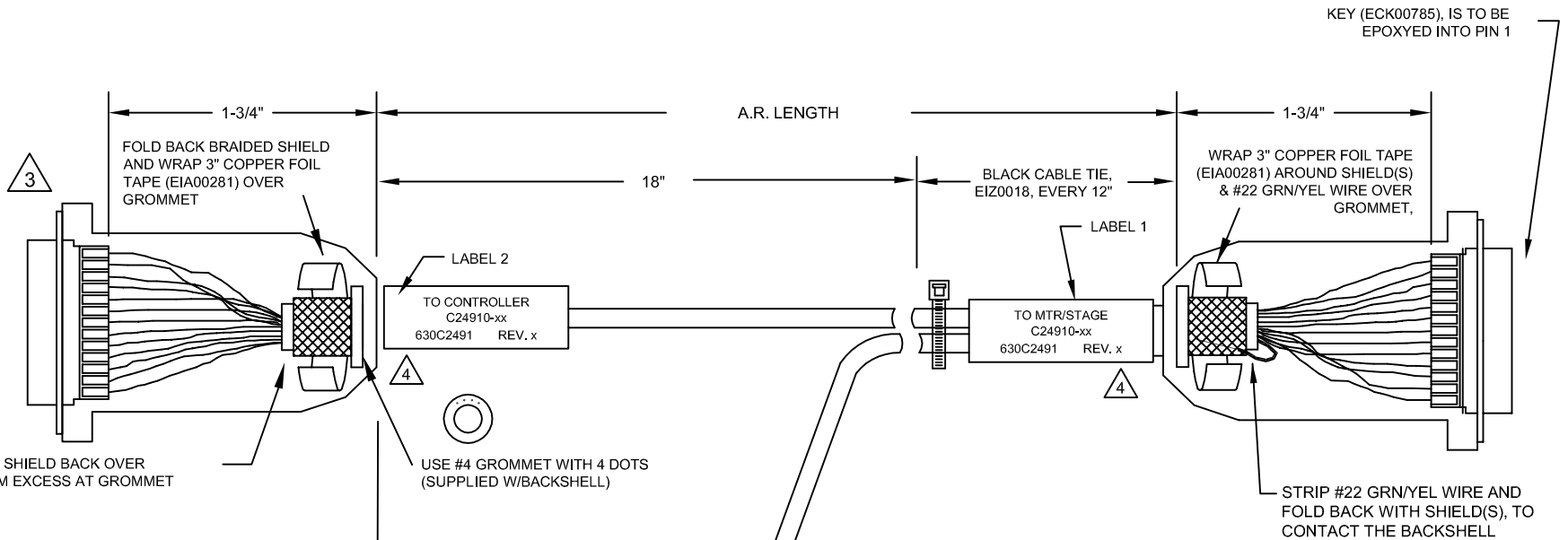


ADD GOLD JUMPER
EIK00351, 3 PLS.

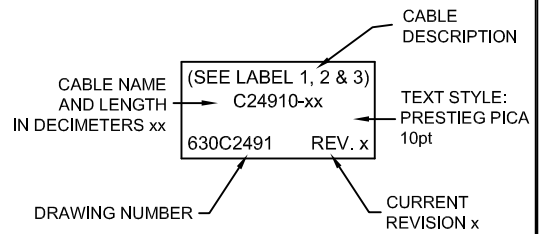
CABLE HOUSING (ECK1520)



4 PIN PLUG W/SCREWS (ECK1523)



- 5 ADD THREE CABLE LABELS, EIA00113
- 4 VERIFY GROMMET IS SECURED TIGHTLY AROUND CABLE. IF NECESSARY BUILD UP WITH SHRINK TUBING.
- 3 FOR CRIMP TOOL USE AMP HANDLE ASSY 58074-1 WITH AMP HEAD ASSY 58063-2
- 1 STARTING CABLE LENGTH SHOULD BE 5 IN LONGER THAN TOTAL LENGTH OF CABLE. LENGTH OF CABLE IS DESIGNATED BY THE (XX) IN CABLE NAME.



FOLD BRAIDED SHIELD BACK OVER GROMMET. TRIM EXCESS AT GROMMET SHOULDER.

WIRE TIE (EIZ00418)
CABLE TO COVER

FROM THIS END (TYP 4 PLS.)
INSTALL FERRULES (4 PLS.)
WITH APPROPRIATE TOOLING

COVER GROUND AND SHIELD WIRE SPLICES WITH 2" SHRINK TUBING (EIW00106)

PROPRIETARY INFORMATION
THIS DRAWING IS THE PROPERTY OF AEROTECH, INC. AND IS SUBMITTED IN CONFIDENCE AND SHALL NOT BE REPRODUCED NOR COPIED NOR DISCLOSED TO OTHERS UNDER PENALTY OF LAW.



AEROTECH, INC. 101 Zeta Drive
Pittsburgh, PA. 15238
(412)963-7470
www.aerotech.com

TOLERANCES ON
FRACTIONS DECIMALS ANGLES
0 TO 6 ±1/32 .XX ±01 ± 0-30'
OVER 6 ±1/16 .XXX ±005

RMS FINISH ✓ EXCEPT AS NOTED

DRAWN	11/5/2014	JFM
CHECKED	11/5/2014	TES
APPD.	11/5/2014	JFM

MPS SERIES STEPPER TO Epaq FEEDBACK & MOTOR CABLE		SM MTR + FB-4TS 25D-25D-3.5ARMS-HF47-MAX135DM	
		PART CODE C24910	SIZE C
SCALE NTS		FILE NAME 630C2491.Dwg	SHEET 1 OF 1

630C2491

REV. A