

REVISIONS		DRAWN	DATE
REV.	DESCRIPTION		

PIN	WIRE	SIGNAL
13	GRN	BRK-
12	WHT	CW/+ LMT
11	-	-
10	-	-
9	-	-
8	-	-
7	DRN	MKR
6	DRN/WHT	MKR-N
5	-	-
4	WHT/BRN	Stage ID
3	#24 VIO	ENC +5V
2	-	-
1	#22 GRN/WHT	SIG SHLD
14	YEL	COS
15	YEL/WHT	COS-N
16	#24 RED	LMT +5V
17	BLU	SIN
18	BLU/WHT	SIN-N
19	-	-
20	#24 BLK	LMT COM
21	#24 GRY	ENC COM
22	BRN/WHT	HM LMT
23	-	-
24	WHT/GRY	CCW/- LMT
25	WHT/GRN	BRK+

SIGNAL	WIRE	* PIN
SIN-N	BLU/WHT	H
BRK+	WHT/GRN	J
SIN	BLU	G
Stage ID	WHT/BRN	K
HM LMT	BRN/WHT	W
CCW/- LMT	WHT/GRY	V
CW/+LMT	WHT	U
COS-N	YEL/WHT	F
MKR	ORN	L
MKR-N	ORN/WHT	X
SIG SHLD	#22 GRN/WHT	Z
BRK-	GRN	T
COS	YEL	E
ENC +5V	#24 VIO	* M
LMT +5V	#24 RED	
MTR SHLD	#22 GRN/WHT	Y
MTR A	#22 BLK	R
FRM GND	#22 GRN/YEL	S
LMT COM	#24 BLK	
ENC COM	#24 GRY	* D
MTR B	#22 RED	N
-	-	P
MTR B-N	#22 WHT	* A
-	-	B
MTR A-N	#22 WHT	C

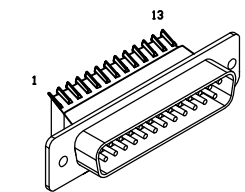


WIRE SIDE VIEW

BURNDY PLUG ECK00135
 CLAMP BURNDY ECK00617
 #28-22 SOCKETS BURNDY ECK00402
 CRIMP TOOL:
 BURNDY HANDLE W/HEAD ASSY N20RT-29
 OR
 BURNDY CRIMPER
 MODEL UTM-2R W/HEAD ASSY CM11G1R

ADD #22 WHT JUMPER BETWEEN PIN A AND PIN C

* = #20-16 SOCKETS BURNDY ECK00403
 CRIMP TOOL: BURNDY HANDLE W/HEAD ASSY N16RT-24

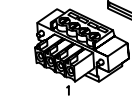


25 PIN D MALE ECK00786
 BACKSHELL ECK00656

FOR CRIMP TOOL USE AMP HANDLE ASSY 58074-1
 WITH AMP HEAD ASSY 58063-2

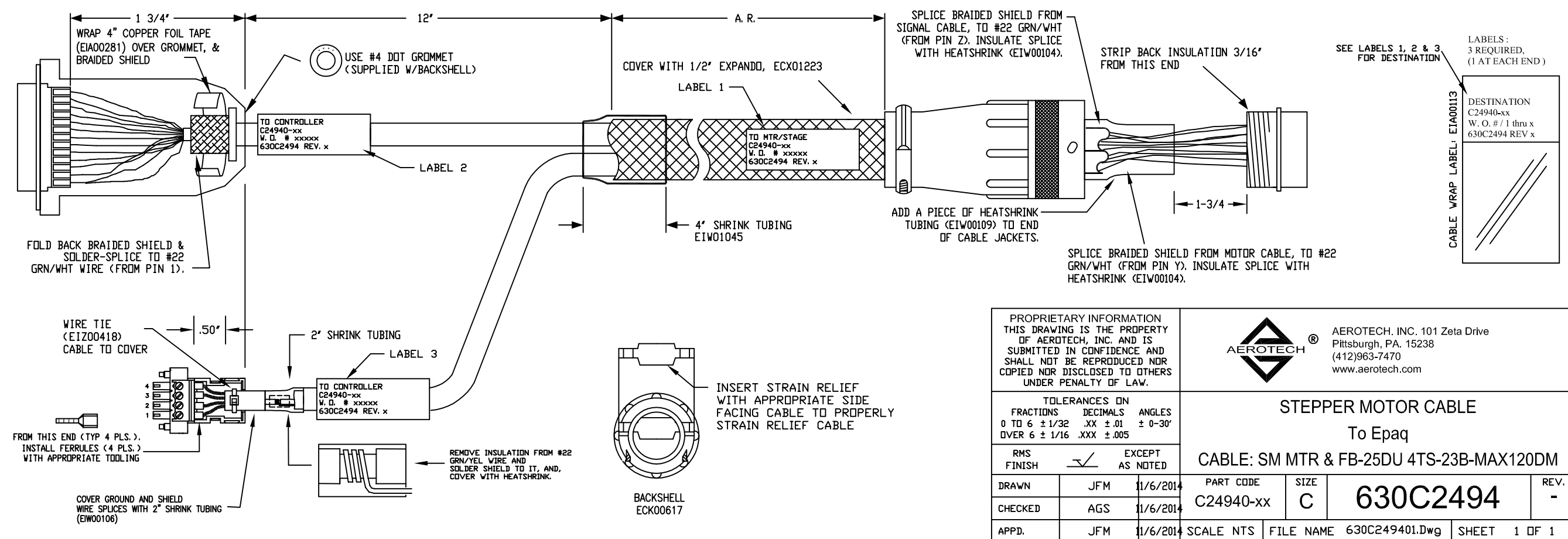
CABLE HOUSING, ECK1520

PIN	FERRULE	WIRE	SIGNAL
4	EIK01085	#22 WHT	MTR Ø C
3	EIK01085	#22 RED	MTR Ø B
2	EIK01085	#22 BLK	MTR Ø A
1	EIK01001	#22 GRN/YEL	SHIELD / FRM GND



4 PIN PLUG W/SCREWS, ECK1523

- 2 USE 2' LENGTHS OF THICK WALL HEATSHRINK TUBING TO BUILD UP CABLE DIAMETER FOR PROPER STRAIN RELIEFING. STRAIN RELIEFING MUST WITHSTAND 35 LB. PULL.
- CUT THICK WALL HEATSHRINK TUBING WITH CABLE CUTTER SUCH THAT ENDS ARE PERPENDICULAR TO CABLE AND CUT IS SMOOTH.
- THICK WALL HEATSHRINK TUBING:
 EIW00112 MAX INSIDE DIA = .750" (EXPANDED),
 MIN INSIDE DIA = .220" (RECOVERED)
 EIW00113 MAX INSIDE DIA = .400" (EXPANDED),
 MIN INSIDE DIA = .150" (RECOVERED)
- 1 STARTING CABLE LENGTH = A. R. LENGTH + 17 IN.



PROPRIETARY INFORMATION THIS DRAWING IS THE PROPERTY OF AEROTECH, INC. AND IS SUBMITTED IN CONFIDENCE AND SHALL NOT BE REPRODUCED NOR COPIED NOR DISCLOSED TO OTHERS UNDER PENALTY OF LAW.		AEROTECH, INC. 101 Zeta Drive Pittsburgh, PA. 15238 (412)963-7470 www.aerotech.com	
TOLERANCES ON FRACTIONS DECIMALS ANGLES 0 TO 6 ± 1/32 .XX ± .01 ± 0-30' OVER 6 ± 1/16 .XXX ± .005		STEPPER MOTOR CABLE To Epaq CABLE: SM MTR & FB-25DU 4TS-23B-MAX120DM	
RMS FINISH	✓	EXCEPT AS NOTED	
DRAWN	JFM	11/6/2014	PART CODE C2494-XX
CHECKED	AGS	11/6/2014	SIZE C
APPD.	JFM	11/6/2014	SCALE NTS
FILE NAME 630C249401.Dwg		SHEET 1 OF 1	
SIZE C		630C2494	
REV. -		REV. -	