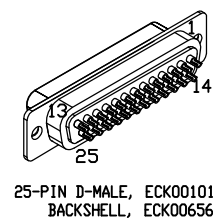
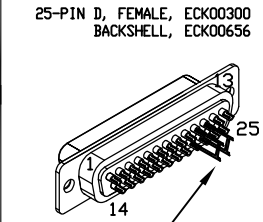


REVISIONS		REV.	DESCRIPTION	DRAWN	DATE



PIN	WIRE	SIGNAL
13	-	-
12	WHT/BRN	CW/+LMT
11	-	-
10	-	-
9	-	-
8	-	-
7	ORN	MKR
6	WHT/ORN	MKR-N
5	-	-
4	WHT/GRN	ID
3	VIO	ENC +5V
2	RED	ENC +5V
1	GRN	THERMISTOR
CASE	SHIELD/DRAIN	SHIELD
14	YEL	COS
15	WHT/YEL	COS-N
16	-	-
17	BLU	SIN
18	WHT/BLU	SIN-N
19	-	-
20	GRY	LMT COM
	WHT	ENC COM
	BRN	ENC COM
	BLK	ENC COM
22	-	-
23	-	-
24	WHT/GRY	CCW/-LMT
25	-	-

SIGNAL	WIRE	PIN
-	-	13
-	-	12
ØA	JMP TO PIN 23	11
ØA RETURN	JMP TO PIN 22	10
-	-	9
-	-	8
CCW/-LMT	WHT/GRY	7
LMT COM	GRY	6
ENC COM	WHT	5
ENC COM	BRN	
ENC COM	BLK	
MKR-N	WHT/ORN	4
SIN-N	WHT/BLU	3
COS-N	WHT/YEL	2
-	-	1
BOTH SHIELDS/FRAME	#20 GRN/YEL	CASE
COS	YEL	14
SIN	BLU	15
MKR	ORN	16
ENC +5V	VIO	17
ENC +5V	RED	18
ID	WHT/GRN	19
CW/+LMT	WHT/BRN	20
THERMISTOR	GRN	21
-	-	22
ØA RETURN	#20 WHT	23
ØA	#20 BLK	24
-	-	25



ECX01009  
16 COND., #24

UNUSED WIRES:  
NONE

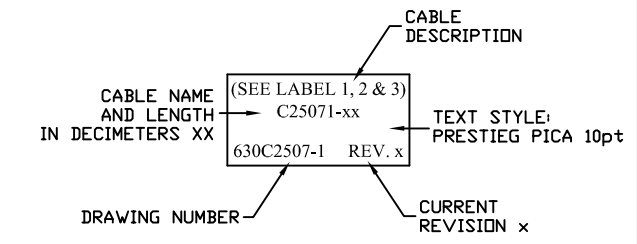
ECX01217  
4 COND., #20

UNUSED WIRE:  
RED

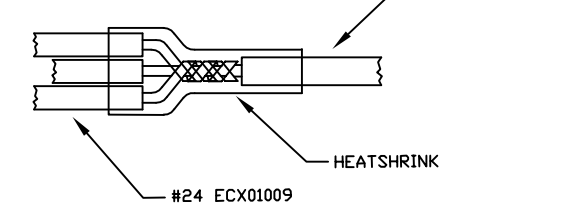
LABEL	WIRE	SIGNAL
G	#20 GRN/YEL	SHIELD/DRAIN
C	#20 WHT	ØC
A	#20 BLK	ØA



6 ADD THREE CABLE LABELS, EIA00113



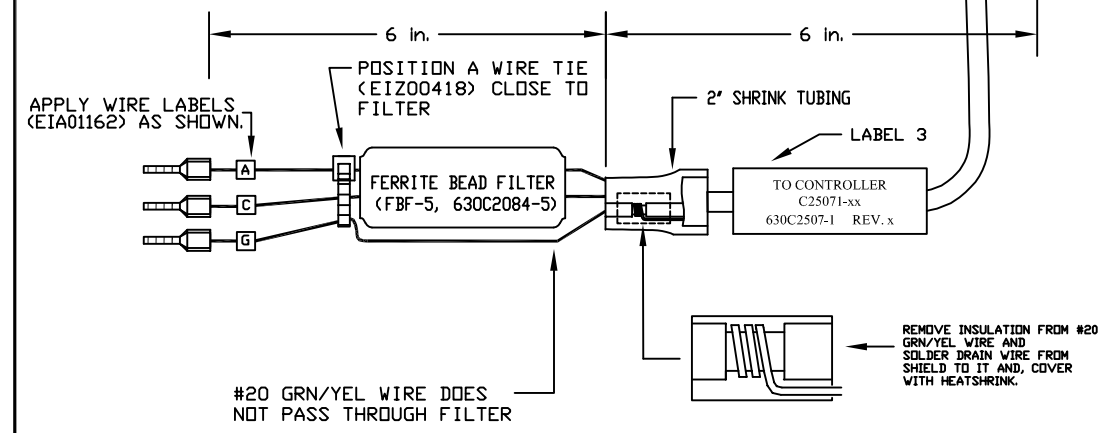
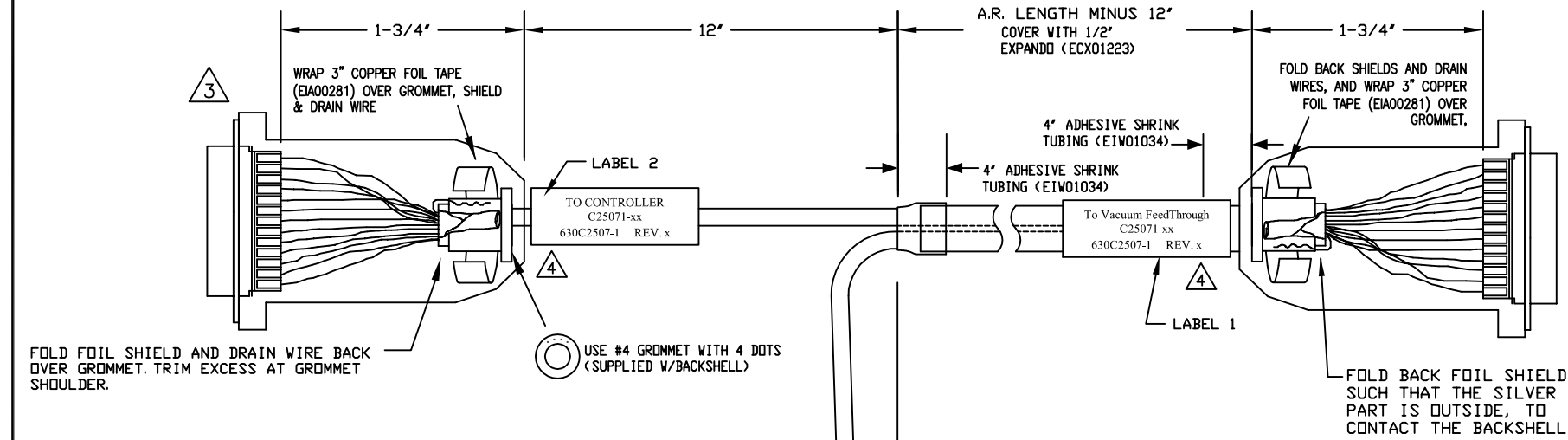
5 SPLICE THREE #24 WIRES TO ONE #22, SOLDER AND COVER WITH HEATSHRINK



4 VERIFY GROMMET IS SECURED TIGHTLY AROUND CABLE. IF NECESSARY BUILD UP WITH SHRINK TUBING.

3 FOR CRIMP TOOL USE AMP HANDLE ASSY 58074-1 WITH AMP HEAD ASSY 58063-2

1 STARTING CABLE LENGTH SHOULD BE 5 IN LONGER THAN TOTAL LENGTH OF CABLE. LENGTH OF CABLE IS DESIGNATED BY THE (XX) IN CABLE NAME.



PROPRIETARY INFORMATION  
THIS DRAWING IS THE PROPERTY OF AEROTECH, INC. AND IS SUBMITTED IN CONFIDENCE AND SHALL NOT BE REPRODUCED NOR COPIED NOR DISCLOSED TO OTHERS UNDER PENALTY OF LAW.



TOLERANCES ON FRACTIONS 0 TO 6 ± 1/32		DECIMALS .XX ± .01		ANGLES ± 0-30'		OVER 6 ± 1/16 .XXX ± .005	
RMS FINISH	✓	EXCEPT AS NOTED					
DRAWN	1/26/2015	JFM					
CHECKED	1/27/2015	JK					
APPD.	1/27/2015	JFM					
PART CODE C25071-xx		SIZE C	DC MTR & FB-25DU FLB-25DU-5ARMS-NOKEY-MAX95DM				
		630C2507-1		REV. -			
SCALE	NTS	FILE NAME	630C2507-101.Dwg	SHEET	1 OF 1		