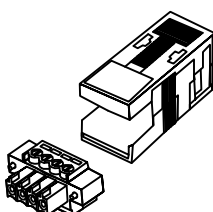
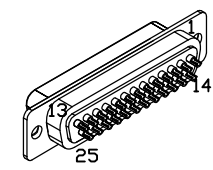


REVISIONS			
REV.	DESCRIPTION	DRAWN	DATE

PIN	WIRE	SIGNAL
13	-	-
12	WHT/BRN	CW/+LMT
11	-	-
10	-	-
9	-	-
8	-	-
7	ORN	MKR
6	WHT/ORN	MKR-N
5	-	-
4	WHT/GRN	ID
3	VIO	ENC +5V
2	GRN	THERMISTOR
1	-	-
CASE	SHIELD/DRAIN	SHIELD

SIGNAL	WIRE	PIN
-	-	13
-	-	12
ØA	JMP TO PIN 23	11
ØA RETURN	JMP TO PIN 22	10
-	-	9
-	-	8
CCW/-LMT	WHT/GRY	7
LMT COM	GRY	6
ENC COM	WHT	5
	BRN	
	BLK	
MKR-N	WHT/ORN	4
SIN-N	WHT/BLU	3
COS-N	WHT/YEL	2
-	-	1
BOTH SHIELDS/FRAME	#20 GRN/YEL	CASE



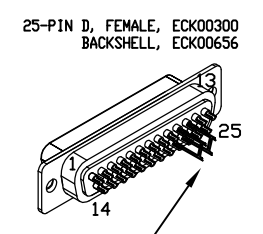
LABEL	WIRE	SIGNAL
4	#20 WHT	ØC
3	-	-
2	#20 BLK	ØA
1	#20 GRN/YEL	SHIELD/DRAIN

ECX01009
16 COND., #24

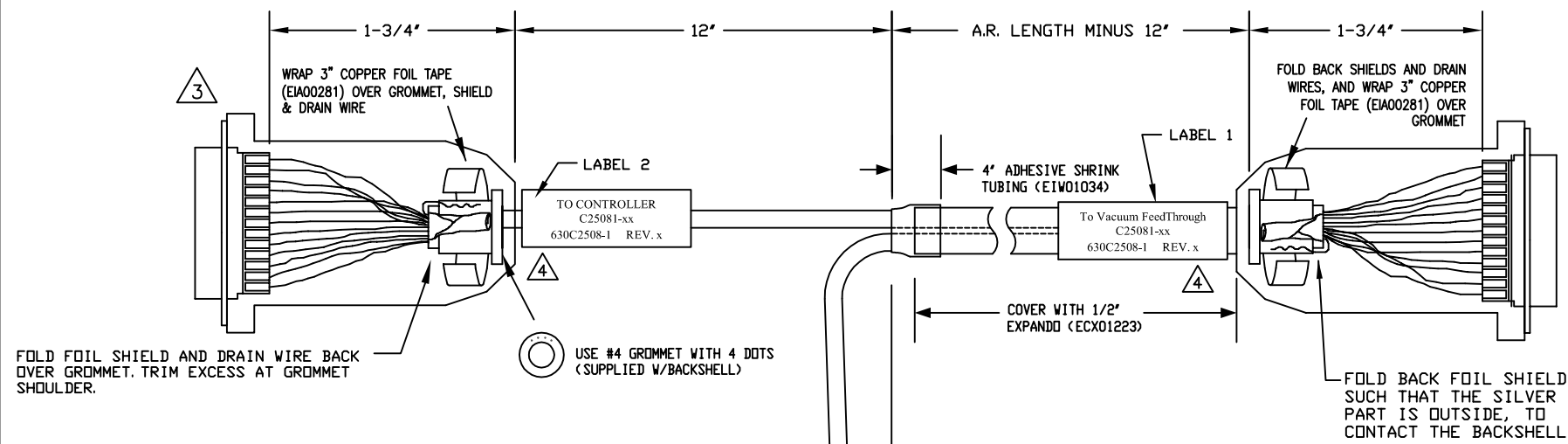
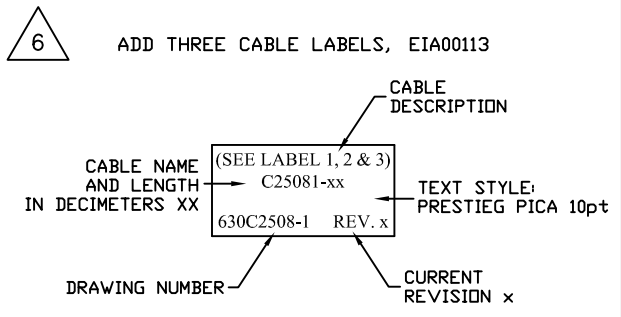
UNUSED WIRES:
NONE

ECX01217
4 COND., #20

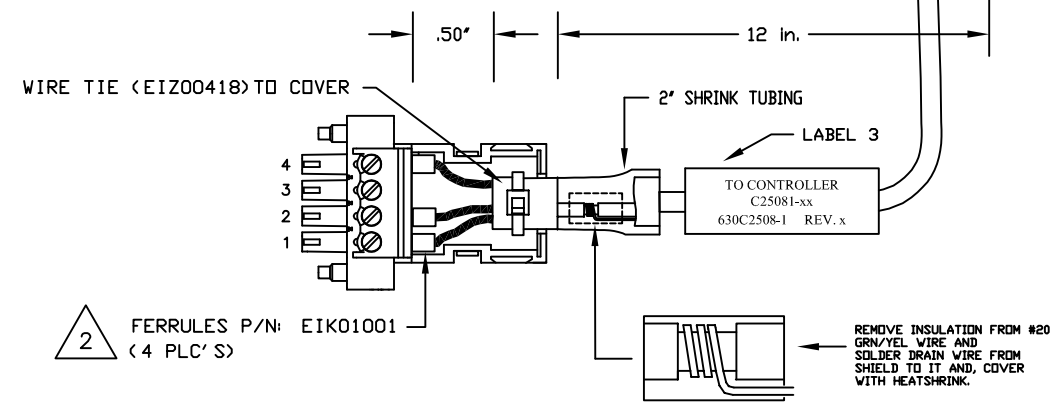
UNUSED WIRE:
RED



ADD GOLD JUMPER
EIK00351, 2 PLS.



- 5 SPLICE THREE #24 WIRES TO ONE #22, SOLDER AND COVER WITH HEATSHRINK
- 4 VERIFY GROMMET IS SECURED TIGHTLY AROUND CABLE. IF NECESSARY BUILD UP WITH SHRINK TUBING.
- 3 FOR CRIMP TOOL USE AMP HANDLE ASSY 58074-1 WITH AMP HEAD ASSY 58063-2
- 1 STARTING CABLE LENGTH SHOULD BE 5 IN LONGER THAN TOTAL LENGTH OF CABLE. LENGTH OF CABLE IS DESIGNATED BY THE (XX) IN CABLE NAME.



PROPRIETARY INFORMATION
THIS DRAWING IS THE PROPERTY OF AEROTECH, INC. AND IS SUBMITTED IN CONFIDENCE AND SHALL NOT BE REPRODUCED NOR COPIED NOR DISCLOSED TO OTHERS UNDER PENALTY OF LAW.

AEROTECH
AEROTECH, INC. 101 Zeta Drive
Pittsburgh, PA. 15238
(412)963-7470
www.aerotech.com

TOLERANCES ON		
FRACTIONS	DECIMALS	ANGLES
0 TO 6 ± 1/32	.XX ± .01	± 0-30'
OVER 6 ± 1/16	.XXX ± .005	

RMS FINISH	EXCEPT AS NOTED
DRAWN	JFM 2/27/15
CHECKED	AGS 2/27/15
APPD.	JFM 2/27/15

Epaq to MPS DC STAGE Cable for Vacuum FeedThrough Use DC MTR & FB-25DU 4TS-25DU-5ARMS-NOKEY-MAX95DM			
PART CODE	SIZE	REV.	
C25081-xx	C	630C2508-1	-
SCALE NTS	FILE NAME 630C2508-101.Dwg	SHEET	1 OF 1