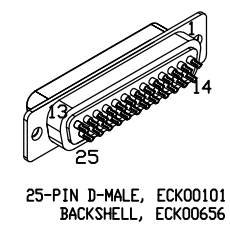
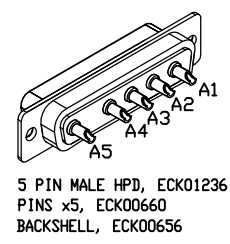


REV. DESCRIPTION		REVISIONS	
REV.	DESCRIPTION	DRAWN	DATE



PIN	WIRE	SIGNAL
13	-	-
12	W/BRN	CW/+LMT
11	-	-
10	-	-
9	-	-
8	-	-
7	ORN	MKR
6	W/ORN	MKR-N
5	-	-
4	W/GRN	ID
3	VIO	ENC +5V
2	GRN	THERMISTOR
1	-	-
CASE	SHIELD	SHIELD

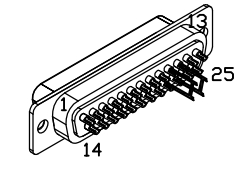


PIN	WIRE	SIGNAL
CASE	SHIELD	SHIELD
A5	#24 GRN	FRAME
A2	#24 WHT	MTR-
A2	#24 GRY	MTR-
A1	#24 VIO	MTR+
A1	#24 PNK	MTR+

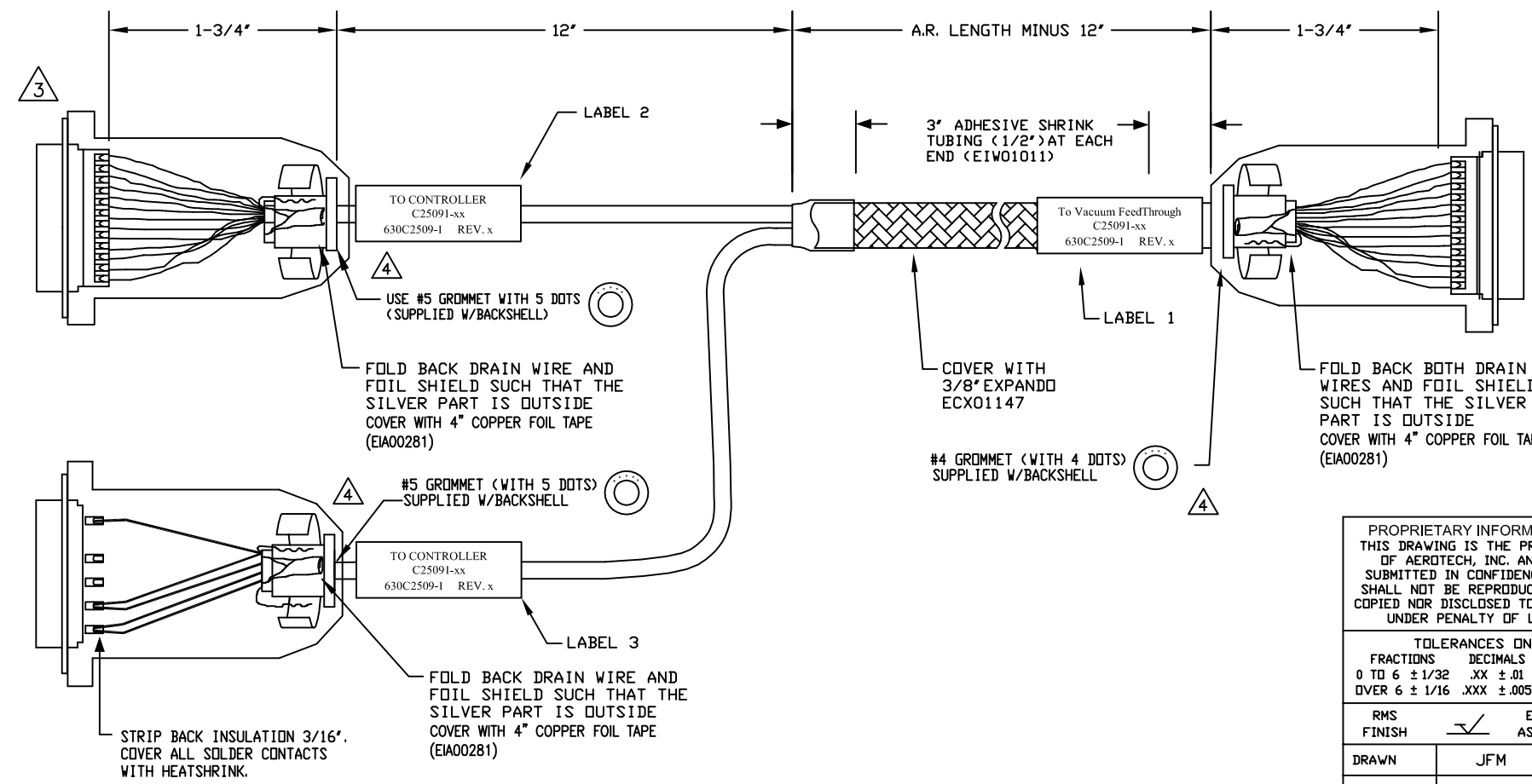
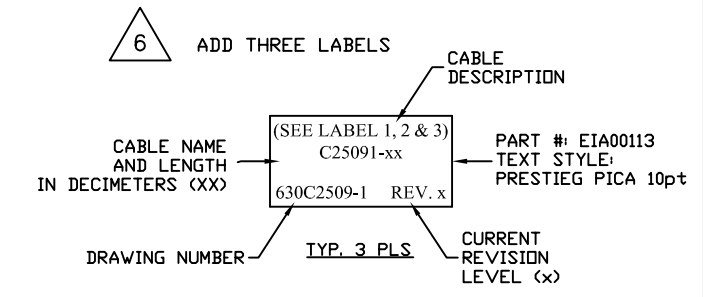
INSTALL ALL PINS IN MOTOR CONNECTOR.

SIGNAL	WIRE	PIN
-	-	13
-	-	12
MOTOR+	* #24 PNK	11
MOTOR-	* #24 GRY	10
-	-	9
-	-	8
CCW/-LMT	W/GRY	7
LMT COM	GRY	6
ENC COM	WHT	5
ENC COM	BRN	5
ENC COM	BLK	5
MKR-N	W/ORN	4
SIN-N	W/BLU	3
COS-N	W/YEL	2
-	-	1
BOTH SHIELDS/FRAME	* #24 GRN	CASE

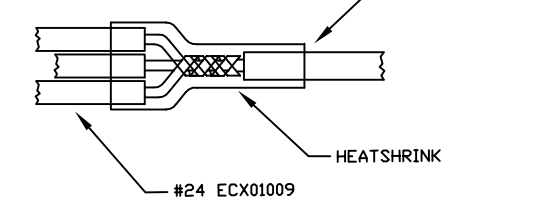
\* WIRES FROM ECX01279



ADD GOLD JUMPER  
EIK00351, 2 PLS.



5 SPLICE THREE #24 WIRES TO ONE #22, SOLDER AND COVER WITH HEATSHRINK



4 VERIFY GROMMET IS SECURED TIGHTLY AROUND CABLE. IF NECESSARY BUILD UP WITH SHRINK TUBING.

3 FOR CRIMP TOOL USE AMP HANDLE ASSY 58074-1 WITH AMP HEAD ASSY 58063-2

1 STARTING CABLE LENGTH SHOULD BE 5 IN LONGER THAN TOTAL LENGTH OF CABLE. LENGTH OF CABLE IS DESIGNATED BY THE (XX) IN CABLE NAME.

PROPRIETARY INFORMATION  
THIS DRAWING IS THE PROPERTY OF AEROTECH, INC. AND IS SUBMITTED IN CONFIDENCE AND SHALL NOT BE REPRODUCED NOR COPIED NOR DISCLOSED TO OTHERS UNDER PENALTY OF LAW.



AEROTECH, INC. 101 Zeta Drive  
Pittsburgh, PA. 15238  
(412)963-7470  
www.aerotech.com

TOLERANCES ON	FRACTIONS	DECIMALS	ANGLES
0 TO 6	± 1/32	.XX ± .01	± 0-30'
OVER 6	± 1/16	.XXX ± .005	

RMS FINISH ✓ EXCEPT AS NOTED

DRAWN	JFM	1/27/15
CHECKED	AGS	1/27/15
APPD.	JFM	1/27/15

Npaq/MR to MPS DC Stage For Vacuum FeedThrough Use	
DC MTR & FB-25DU 5DU-25DU-2ARMS-NOKEY-MAX95DM	
PART CODE	SIZE
C25091-xx	C
630C2509-1	
REV.	-
SCALE	NTS
FILE NAME	630C2509-101.Dwg
SHEET	1 OF 1