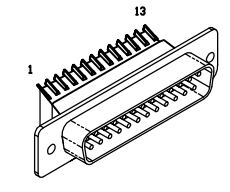
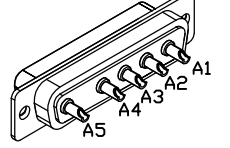


REVISIONS		REV.	DESCRIPTION	DRAWN	DATE

25-PIN D, MALE, ECK00786
BACKSHELL, ECK00656



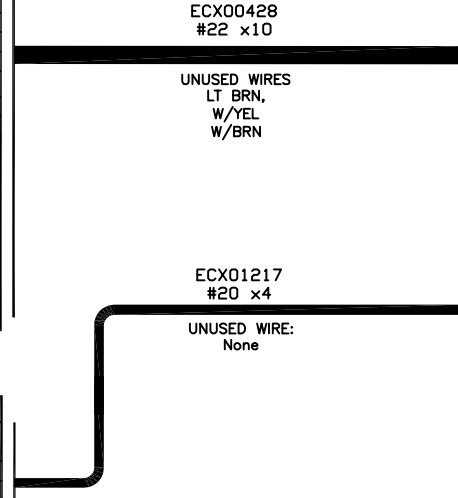
5 PIN MALE HPD, ECK01236
PINS (5), ECK00660
BACKSHELL, ECK00656



INSTALL ALL PINS

PIN	WIRE	SIGNAL
13	-	-
12	YEL	CW/+LMT
11	-	-
10	-	-
9	-	-
8	-	-
7	-	-
6	-	-
5	-	-
4	W/ORN	ID
3	VIO	ENC +5V
2	W/RED	THERMISTOR
1	-	-
CASE	SHIELD/DRAIN	SHIELD
14	-	-
15	-	-
16	-	-
17	-	-
18	-	-
19	-	-
20	W/GRN	LMT COM
21	BRN	ENC COM
22	-	-
23	-	-
24	W/GRY	CCW/-LMT
25	-	-

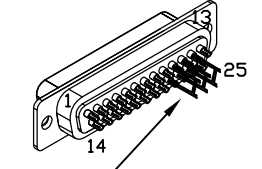
PIN	WIRE	SIGNAL
CASE	SHIELD/DRAIN	SHIELD
A1	BLK	ØA
A2	RED	ØB
A3	WHT	ØA, ØB RETURN
A4	-	-
A5	GRN/YEL	FRAME GROUND



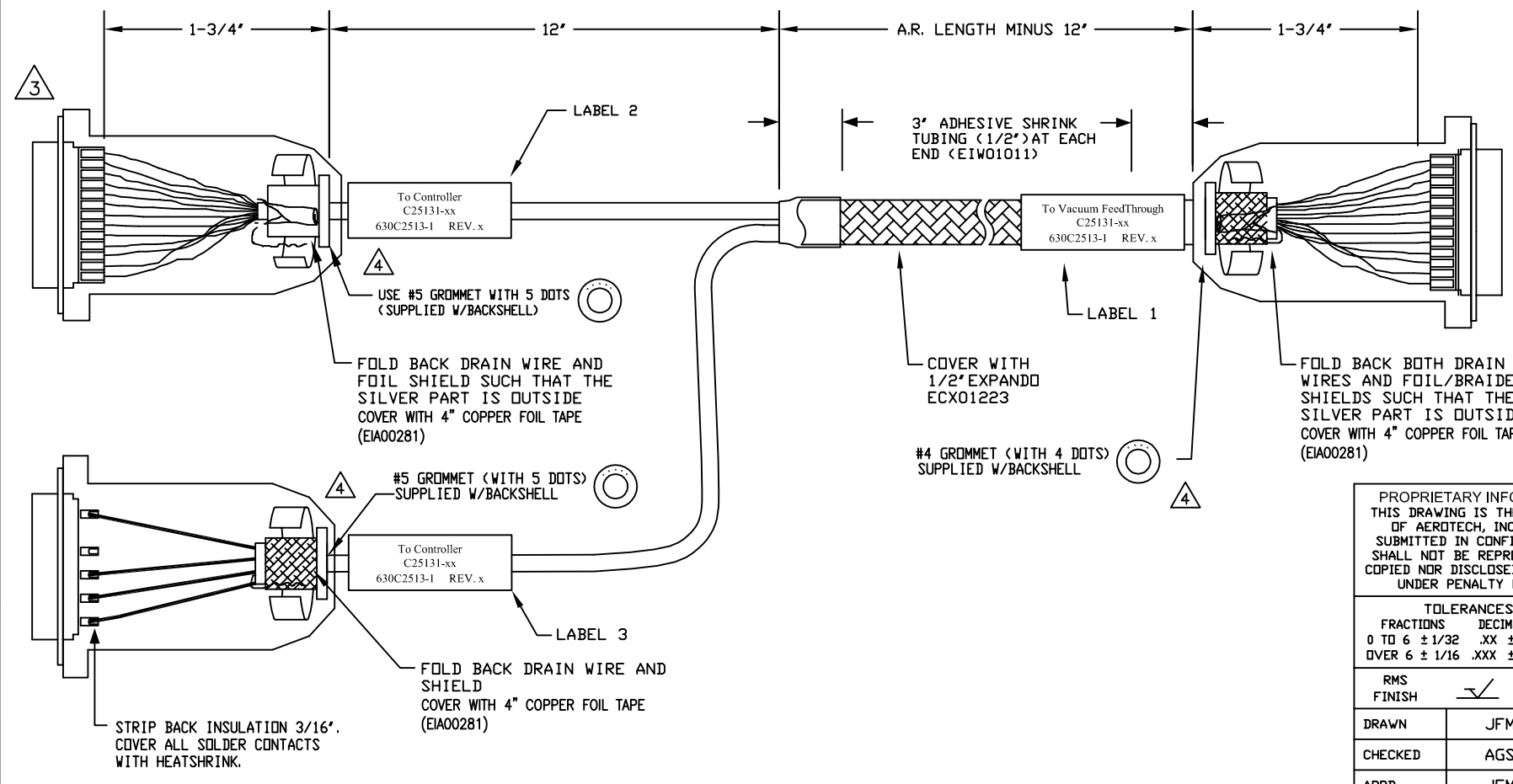
SIGNAL	WIRE	PIN
-	-	13
ØB	-	12
ØA	-	11
ØA, ØB RETURN	-	10
-	-	9
-	-	8
CCW/-LMT	W/GRY	7
LMT COM	W/GRN	6
ENC COM	BRN	5
-	-	4
-	-	3
-	-	2
-	-	1
BOTH SHIELDS/FRAME	* #20 GRN/YEL	CASE
-	-	14
-	-	15
-	-	16
ENC +5V	VIO	17
ID	W/ORN	18
CW/+LMT	YEL	19
THERMISTOR	W/RED	20
-	-	21
ØA, ØB RETURN	* #20 WHT	22
ØA	* #20 BLK	23
ØB	* #20 RED	24
-	-	25

* WIRES ARE FROM ECX01217

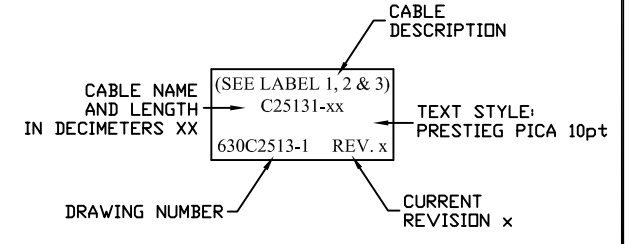
25-PIN D, FEMALE, ECK00300
BACKSHELL, ECK00656



ADD GOLD JUMPER
EIK00351, 3 PLS.



- 5 ADD THREE LABELS, EIA00113
- 4 VERIFY GROMMET IS SECURED TIGHTLY AROUND CABLE. IF NECESSARY BUILD UP WITH SHRINK TUBING.
- 3 FOR CRIMP TOOL USE AMP HANDLE ASSY 58074-1 WITH AMP HEAD ASSY 58063-2
- 1 STARTING CABLE LENGTH SHOULD BE 5 IN LONGER THAN TOTAL LENGTH OF CABLE. LENGTH OF CABLE IS DESIGNATED BY THE (XX) IN CABLE NAME.



PROPRIETARY INFORMATION
THIS DRAWING IS THE PROPERTY
OF AEROTECH, INC. AND IS
SUBMITTED IN CONFIDENCE AND
SHALL NOT BE REPRODUCED NOR
COPIED NOR DISCLOSED TO OTHERS
UNDER PENALTY OF LAW.



AEROTECH, INC. 101 Zeta Drive
Pittsburgh, PA. 15238
(412)963-7470
www.aerotech.com

TOLERANCES ON	FRACTIONS	DECIMALS	ANGLES
0 TO 6	± 1/32	.XX ± .01	± 0-30'
OVER 6	± 1/16	.XXX ± .005	

RMS FINISH EXCEPT AS NOTED

Npaq To MPS Stepper Stage For Vacuum FeedThrough Use		SM & FB-25DU 5DU-25DU-5ARMS-NOKEY-MAX110DM	
DRAWN	JFM	1/27/15	
CHECKED	AGS	1/27/15	
APPD.	JFM	1/27/15	
PART CODE	C25131-xx	SIZE	C
FILE NAME	630C2513-101.Dwg	SHEET	1 OF 1
630C2513-1		REV.	-