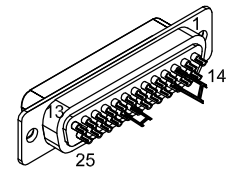


REV.		DESCRIPTION		REVISIONS		DRAWN	DATE

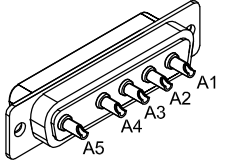


25-PIN D, MALE, ECK00101  
BACKSHELL, ECK00656  
ADD EIK00351 JUMPER  
FROM PIN 3 TO 16  
AND  
FROM PIN 20 TO 21

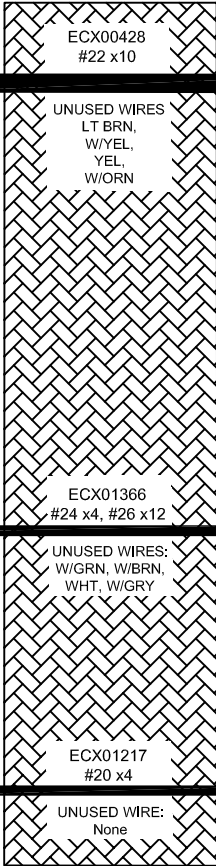
PIN	SIGNAL	ECX01366	ECX00428
13	-	-	-
12	CW+LMT	-	W/GRN
11	-	-	-
10	-	-	-
9	-	-	-
8	-	-	-
7	MRK+	ORN	-
6	MRK-	W/ORN	-
5	-	-	-
4	ID	-	W/RED
3	ENC +5V	#24 VIO, BRN	VIO
2	-	-	-
1	-	-	-
CASE	SHIELD	SHIELD	SHIELD/DRAIN
14	COS+	BLU	-
15	COS-	W/BLU	-
16	LMT +5V	#24 RED	-
17	SIN+	YEL	-
18	SIN-	W/YEL	-
19	-	-	-
20	LMT COM	#24 GRY	W/BRN
21	ENC COM	#24 BLK, GRN	BRN
22	-	-	-
23	-	-	-
24	CCW-LMT	-	W/GRY
25	-	-	-

PIN	WIRE	SIGNAL
CASE	SHIELD/DRAIN	SHIELD
A1	BLK	ØA
A2	RED	ØB
A3	WHT	ØA, ØB RETURN
A4	-	-
A5	GRN/YEL	FRAME GROUND

HPD MALE, ECK01236  
PINS x5, ECK00660  
BACKSHELL, ECK00656



INSTALL ALL PINS

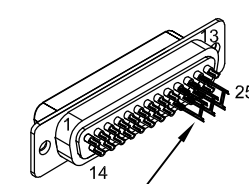


SIGNAL	WIRE	PIN
-	-	13
ØB	-	12
ØA	-	11
ØA, ØB RETURN	-	10
-	-	9
-	-	8
CCW-LMT	W/GRY	7
LMT COM	W/BRN	6
ENC COM	BRN	5
-	-	4
-	-	3
-	-	2
-	-	1
BOTH SHIELDS/FRAME	* #20 GRN/YEL	CASE
-	-	14
-	-	15
-	-	16
ENC +5V	VIO	17
ID	W/RED	18
CW+LMT	W/GRN	19
-	-	20
-	-	21
ØA, ØB RETURN	* #20 WHT	
ØA	* #20 BLK	23
ØB	* #20 RED	24
-	-	25

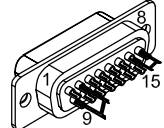
\* #20 WIRES ARE FROM ECX01217

SIGNAL	WIRE	PIN
-	-	15
SIN+	YEL	14
COS+	BLU	13
MRK+	ORN	12
-	-	11
-	-	10
COM	#24 GRY	9
5V	#24 VIO, BRN	8
5V	#24 RED	7
SIN-	W/YEL	6
COS-	W/BLU	5
MRK-	W/ORN	4
-	-	3
COM	#24 BLK, GRN	2
-	-	1
SHIELD	SHIELD	CASE

25-PIN D, FEMALE, ECK00300  
BACKSHELL, ECK00656  
JACK SOCKETS, ECK00129



ADD GOLD JUMPER  
EIK00351, 3 PLS.

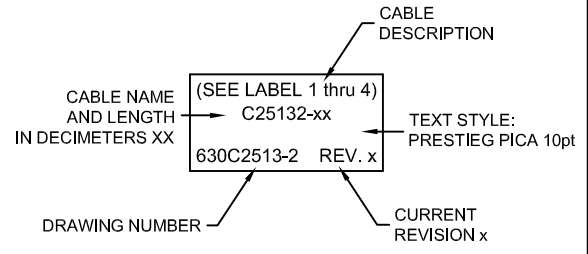
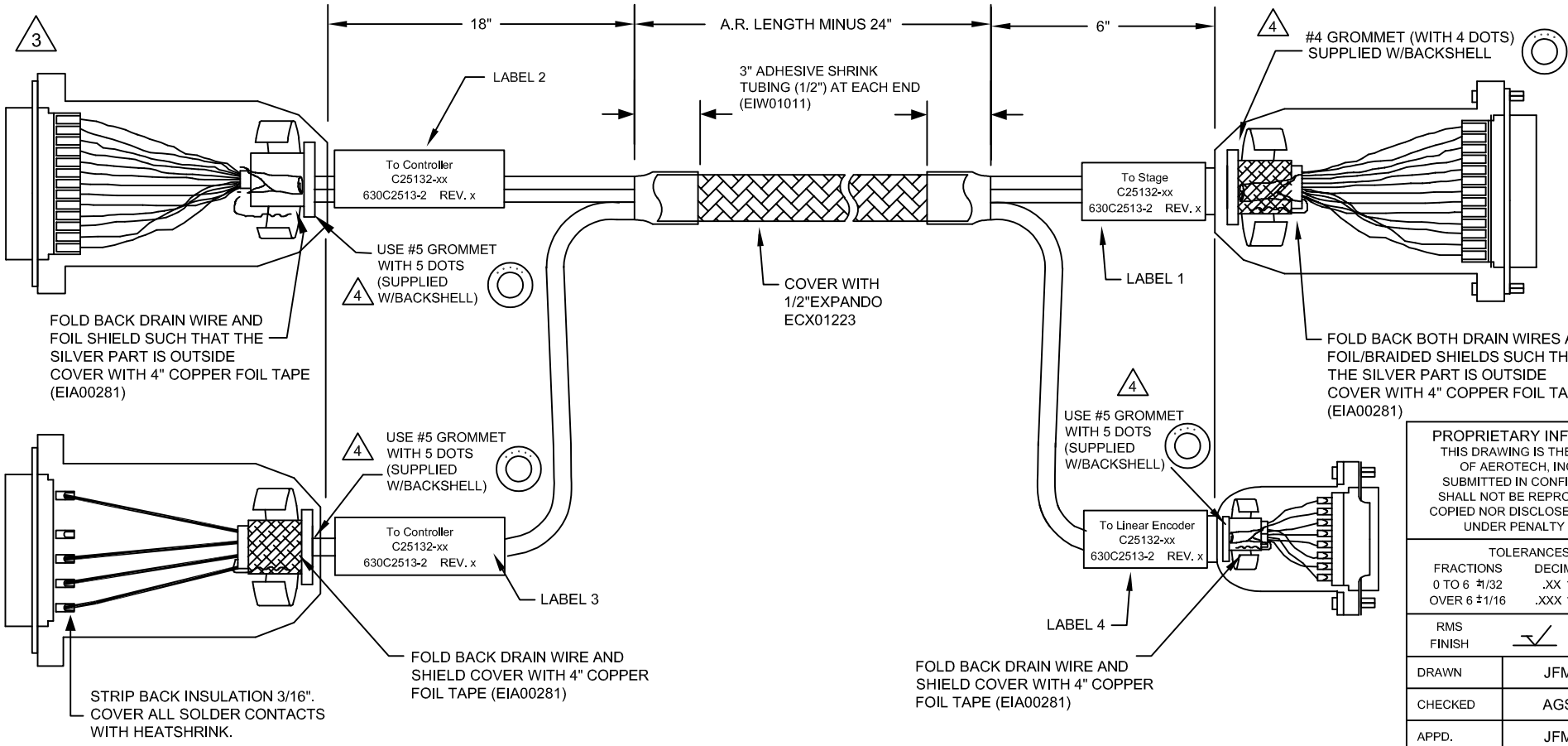


15D FEMALE, ECK00326  
BACKSHELL, ECK01022  
JACK SOCKETS, ECK00129

ADD GOLD JUMPER  
EIK00351, 2 PLS.



ADD FOUR LABELS, EIA00113



VERIFY GROMMET IS SECURED TIGHTLY AROUND  
CABLE. IF NECESSARY BUILD UP WITH  
SHRINK TUBING.



FOR CRIMP TOOL USE AMP HANDLE ASSY 58074-1  
WITH AMP HEAD ASSY 58063-2

1

STARTING CABLE LENGTH SHOULD BE 4 IN  
LONGER THAN TOTAL LENGTH OF CABLE. LENGTH  
OF CABLE IS DESIGNATED BY THE (XX) IN  
CABLE NAME.

PROPRIETARY INFORMATION  
THIS DRAWING IS THE PROPERTY  
OF AEROTECH, INC. AND IS  
SUBMITTED IN CONFIDENCE AND  
SHALL NOT BE REPRODUCED NOR  
COPIED NOR DISCLOSED TO OTHERS  
UNDER PENALTY OF LAW.



AEROTECH, INC. 101 Zeta Drive  
Pittsburgh, PA. 15238  
(412)963-7470  
www.aerotech.com

TOLERANCES ON		
FRACTIONS	DECIMALS	ANGLES
0 TO 6 ±1/32	.XX ±01	± 0-30°
OVER 6 ±1/16	.XXX ±005	

RMS FINISH	EXCEPT AS NOTED
✓	

Npq To MPS Stepper Stage with Linear Encoder		SM MTR + FB-5D 25D-25D 15D-3.5ARMS-MAX96DM	
PART CODE	SIZE	REV.	
C25132	C	-	
SCALE	FILE NAME	SHEET	1 OF 1
NTS	630C2513-2.Dwg		

DRAWN	JFM	1/22/2020
CHECKED	AGS	1/22/2020
APPD.	JFM	1/22/2020