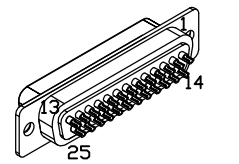
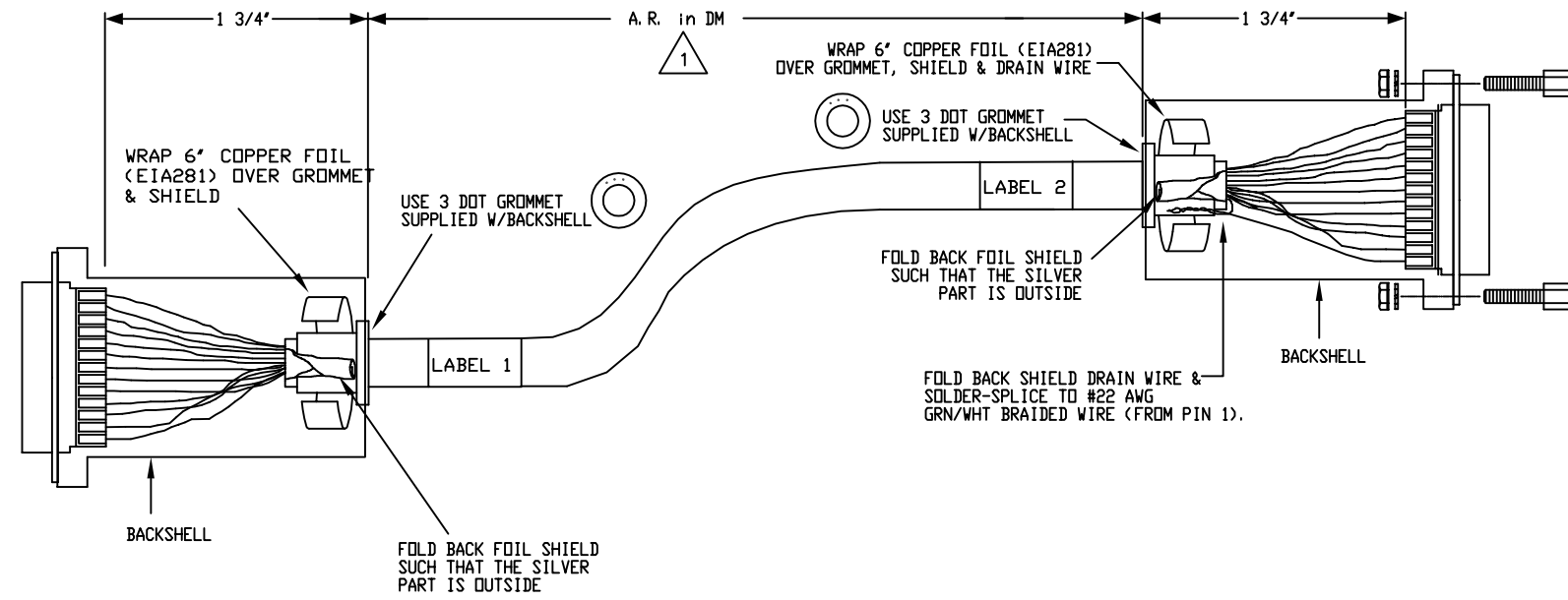


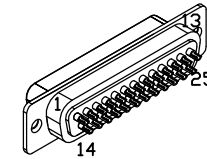
| REVISIONS | | | |
|-----------|-------------|------|-------|
| REV. | DESCRIPTION | DATE | DRAWN |
| | | | |

To
Npaq J8
High Speed I/O

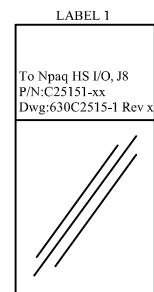
AUX ENCODER
CH 1



25 PIN MALE D-STYLE, ECK00101
BACKSHELL, ECK0656



25 PIN FEMALE D-STYLE, ECK00300
BACKSHELL, ECK0656
JACK SOCKETS, ECK00129



Label 1
To Npaq HS I/O, J8
P/N: C25151-xx
Dwg: 630C2515-1 Rev x

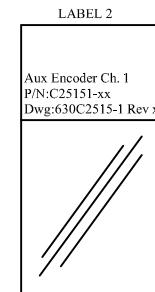
CABLE WRAP LABEL: EIA00113

| PIN | WIRE | SIGNAL |
|-----|------|------------|
| 1 | - | - |
| 2 | - | - |
| 3 | - | - |
| 4 | - | - |
| 5 | - | - |
| 6 | - | - |
| 7 | - | - |
| 8 | - | - |
| 9 | - | - |
| 10 | - | - |
| 11 | - | - |
| 12 | - | - |
| 13 | RED | AUX 1 SIN+ |
| 14 | BLU | AUX 1 SIN- |
| 15 | BLK | AUX 1 COS+ |
| 16 | WHT | AUX 1 COS- |
| 17 | - | - |
| 18 | - | - |
| 19 | - | - |
| 20 | - | - |
| 21 | - | - |
| 22 | - | - |
| 23 | - | - |
| 24 | GRN | COMMON |
| 25 | BRN | Enc 5V |

6 COND #24, ECK00551

UNUSED WIRES: None

| SIGNAL | WIRE | SOCKET |
|--------|-------------|--------|
| - | - | 13 |
| - | - | 12 |
| - | - | 11 |
| - | - | 10 |
| - | - | 9 |
| - | - | 8 |
| - | - | 7 |
| - | - | 6 |
| - | - | 5 |
| - | - | 4 |
| Enc 5V | BRN | 3 |
| - | - | 2 |
| SHIELD | #24 GRN/WHT | 1 |
| COS+ | BLK | 14 |
| COS- | WHT | 15 |
| - | - | 16 |
| SIN+ | RED | 17 |
| SIN- | BLU | 18 |
| - | - | 19 |
| - | - | 20 |
| COMMON | GRN | 21 |
| - | - | 22 |
| - | - | 23 |
| - | - | 24 |
| - | - | 25 |



Label 2
Aux Encoder Ch. 1
P/N: C25151-xx
Dwg: 630C2515-1 Rev x

CABLE WRAP LABEL: EIA00113



STARTING CABLE LENGTH = 150mm (6 in.) longer than finished length.

PROPRIETARY INFORMATION
THIS DRAWING IS THE PROPERTY
OF AEROTECH, INC. AND IS
SUBMITTED IN CONFIDENCE AND
SHALL NOT BE REPRODUCED NOR
COPIED NOR DISCLOSED TO OTHERS
UNDER PENALTY OF LAW.



AEROTECH, INC. 101 Zeta Drive
Pittsburgh, PA. 15238
www.aerotech.com

TOLERANCES ON
FRACTIONS DECIMALS ANGLES
0 TO 6 ± 1/32 .XX ± .01 ± 0-30°
OVER 6 ± 1/16 .XXX ± .005

RMS FINISH EXCEPT AS NOTED

ENC FB-25DU-25DUJS-ADP CH 1
Npaq High Speed I/O (J8)
AUX ENCODER CH 1

| | | |
|---------|-----------|-----|
| DRAWN | 3/13/2015 | JFM |
| CHECKED | 3/13/2015 | AGS |
| APPD. | 3/13/2015 | JFM |

| | | |
|-------------------|----------------------------|--------------|
| PART CODE | SIZE | REV. |
| C25151 | C | - |
| 630C2515-1 | | |
| SCALE NTS | FILE NAME 630C2515-101.Dwg | SHEET 1 OF 1 |