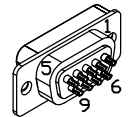


REV. DESCRIPTION		REVISIONS	
REV.	DESCRIPTION	DRAWN	DATE

9 PIN D-MALE, ECK00137  
BACKSHELL, ECK01021  
ADD SCREW LOCKS

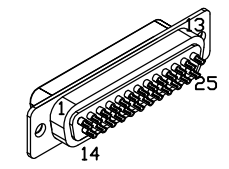


PIN	WIRE	SIGNAL
5	GRY	COM
4	VIO	ENC +5V
3	ORN	MRK
2	YEL	COS
1	BLU	SIN
CASE	SHIELD	SHIELD
6	W/BLU	SIN-N
7	W/YEL	COS-N
8	W/ORN	MRK-N
9	BLK	COM

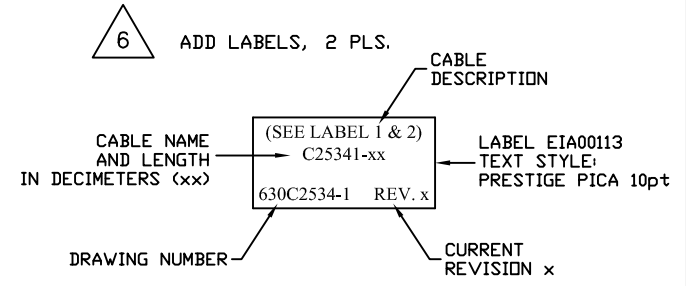
ECX01009  
#24 x16

UNUSED WIRES:  
GRN, W/GRN,  
W/GRY, BRN,  
W/BRN, WHT

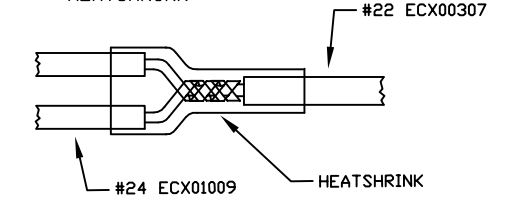
SIGNAL	WIRE	PIN
-	-	13
-	-	12
-	-	11
-	-	10
-	-	9
-	-	8
MRK	ORN	7
MRK-N	W/ORN	6
ENC +5V	VIO	5
ENC +5V	VIO	4
ENC +5V	VIO	3
ENC +5V	VIO	2
ENC +5V	VIO	1
SHIELD	SHIELD	CASE
COS	YEL	14
COS-N	W/YEL	15
ENC +5V	RED	16
SIN	BLU	17
SIN-N	W/BLU	18
-	-	19
ENC COM	GRY	20
ENC COM	BLK	21
-	-	22
-	-	23
-	-	24
-	-	25



25-PIN D-FEMALE, ECK00300  
BACKSHELL, ECK00656  
ADD SCREW LOCKS



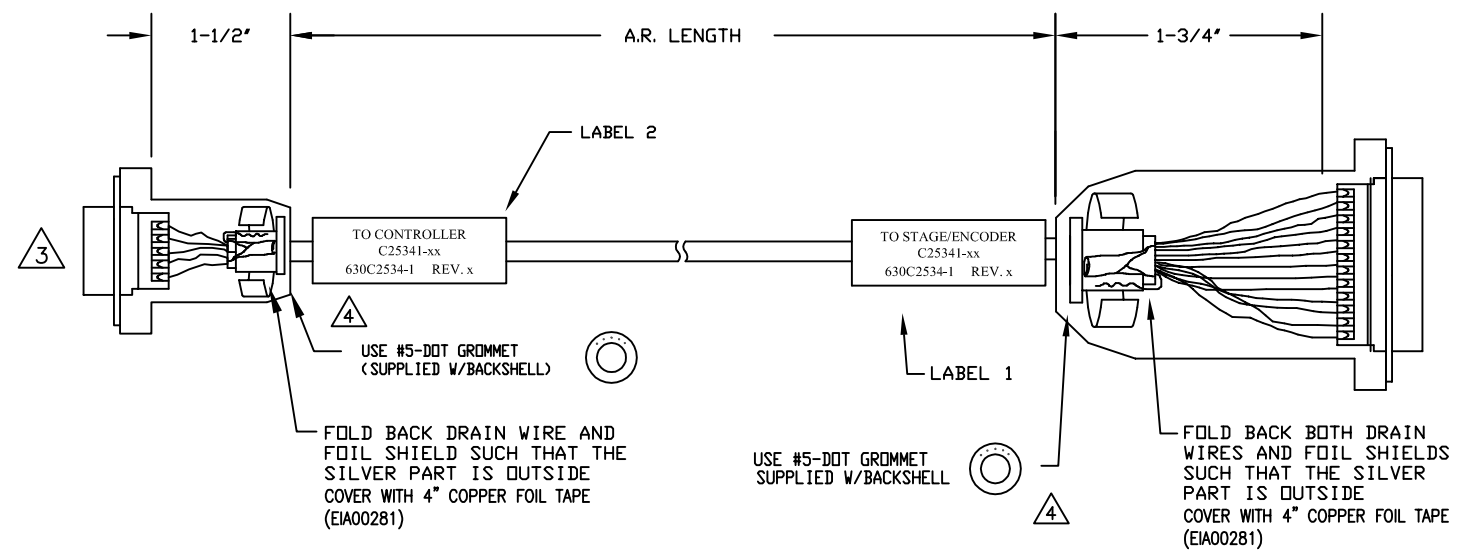
5 SPLICE 2, #24 WIRES TO A #22 VIO WIRE, SOLDER AND COVER WITH HEATSHRINK



4 VERIFY GROMMET IS SECURED TIGHTLY AROUND CABLE. IF NECESSARY BUILD UP WITH SHRINK TUBING.

3 FOR CRIMP TOOL USE AMP HANDLE ASSY 58074-1 WITH AMP HEAD ASSY 58063-2

1 STARTING CABLE LENGTH SHOULD BE 5 IN LONGER THAN TOTAL LENGTH OF CABLE. LENGTH OF CABLE IS DESIGNATED BY THE (XX) IN CABLE NAME.



PROPRIETARY INFORMATION  
THIS DRAWING IS THE PROPERTY  
OF AEROTECH, INC. AND IS  
SUBMITTED IN CONFIDENCE AND  
SHALL NOT BE REPRODUCED NOR  
COPIED NOR DISCLOSED TO OTHERS  
UNDER PENALTY OF LAW.



AEROTECH, INC. 101 Zeta Drive  
Pittsburgh, PA. 15238  
(412)963-7470  
www.aerotech.com

TOLERANCES ON	FRACTIONS	DECIMALS	ANGLES
0 TO 6	± 1/32	.XX ± .01	± 0-30'
OVER 6	± 1/16	.XXX ± .005	

RMS FINISH  EXCEPT AS NOTED

Npq MR/Epaq MR 9D Sec. Fdbk  
to 25D MXH  
CABLE: ENC-9DU-25DU-MAX73DM

DRAWN	JFM	11/6/2015	PART CODE	SIZE	REV.
CHECKED	TES	11/6/2015	C25341-xx	C	630C2534-1
APPD.	JFM	11/6/2015	SCALE NTS	FILE NAME 630C2534-101.Dwg	SHEET 1 OF 1