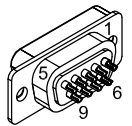


| REVISIONS |             |       |      |
|-----------|-------------|-------|------|
| REV.      | DESCRIPTION | DRAWN | DATE |
|           |             |       |      |

9D MALE, ECK00137  
BACKSHELL, ECK01021  
ADD SCREW LOCKS



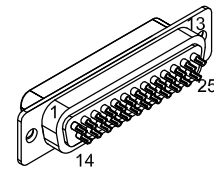
5

| PIN  | WIRE   | SIGNAL  |
|------|--------|---------|
| 5    | GRY    | COM     |
| 4    | VIO    | ENC +5V |
|      | RED    |         |
| 3    | ORN    | MRK     |
| 2    | YEL    | COS     |
| 1    | BLU    | SIN     |
| CASE | SHIELD | SHIELD  |
| 6    | W/BLU  | SIN-N   |
| 7    | W/YEL  | COS-N   |
| 8    | W/ORN  | MRK-N   |
| 9    | BLK    | COM     |

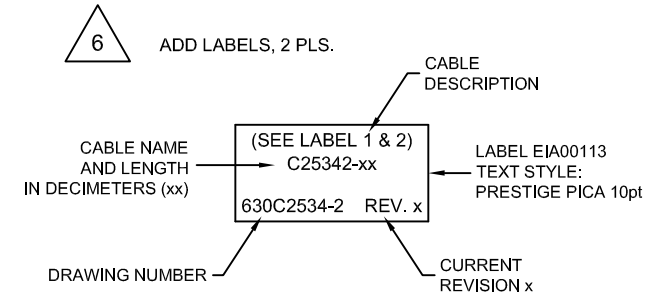
ECX01009  
#24 x16

UNUSED WIRES:  
GRN, W/GRN,  
W/GRY, BRN,  
W/BRN, WHT

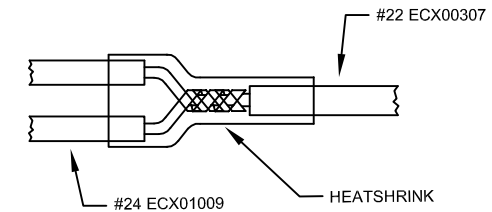
| SIGNAL  | WIRE   | PIN  |
|---------|--------|------|
| -       | -      | 13   |
| -       | -      | 12   |
| -       | -      | 11   |
| -       | -      | 10   |
| -       | -      | 9    |
| -       | -      | 8    |
| MRK     | ORN    | 7    |
| MRK-N   | W/ORN  | 6    |
| -       | -      | 5    |
| -       | -      | 4    |
| ENC +5V | VIO    | 3    |
| -       | -      | 2    |
| -       | -      | 1    |
| SHIELD  | SHIELD | CASE |
|         |        |      |
| COS     | YEL    | 14   |
| COS-N   | W/YEL  | 15   |
| ENC +5V | RED    | 16   |
| SIN     | BLU    | 17   |
| SIN-N   | W/BLU  | 18   |
| -       | -      | 19   |
| ENC COM | GRY    | 20   |
| ENC COM | BLK    | 21   |
| -       | -      | 22   |
| -       | -      | 23   |
| -       | -      | 24   |
| -       | -      | 25   |



25D FEMALE, ECK00300  
BACKSHELL, ECK00656  
JACK SOCKETS, ECK00129

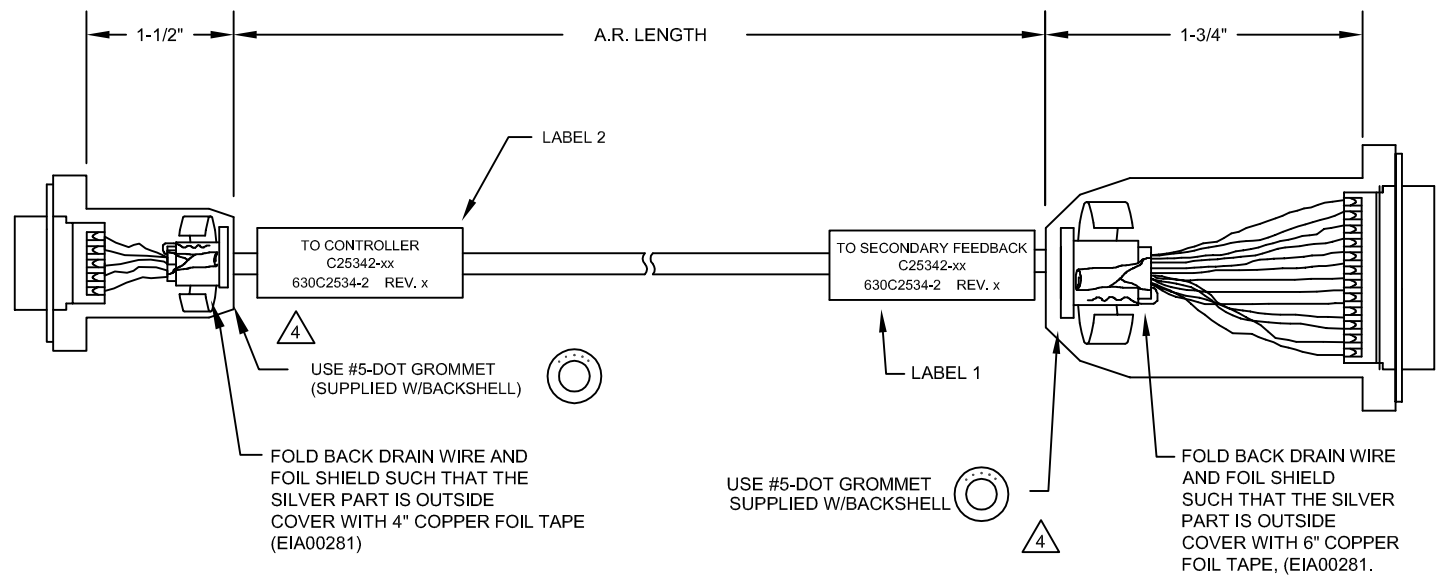


5 SPLICE 2, #24 WIRES TO A #22 VIO WIRE, SOLDER AND COVER WITH HEATSHRINK



4 VERIFY GROMMET IS SECURED TIGHTLY AROUND CABLE. IF NECESSARY BUILD UP WITH SHRINK TUBING.

1 STARTING CABLE LENGTH SHOULD BE 4 IN LONGER THAN TOTAL LENGTH OF CABLE. LENGTH OF CABLE IS DESIGNATED BY THE (XX) IN CABLE NAME.



|   |  |   |                              |
|---|--|---|------------------------------|
| PROPRIETARY INFORMATION<br>THIS DRAWING IS THE PROPERTY OF AEROTECH, INC. AND IS SUBMITTED IN CONFIDENCE AND SHALL NOT BE REPRODUCED NOR COPIED NOR DISCLOSED TO OTHERS UNDER PENALTY OF LAW. |  | AEROTECH, INC. 101 Zeta Drive<br>Pittsburgh, PA. 15238<br>(412)963-7470<br>www.aerotech.com |                              |
| TOLERANCES ON<br>FRACTIONS    DECIMALS    ANGLES<br>0 TO 6 1/32    .XX ±01    ± 0-30°<br>OVER 6 1/16    .XXX ±005   |  | <b>Npaq MR/Epaq MR 9D Sec. Fdbk to 25DJS</b><br><b>CABLE: ENC-9D-25DJS-MAX73DM</b>          |                              |
| RMS FINISH <input checked="" type="checkbox"/> EXCEPT AS NOTED  | DRAWN    JFM    1/9/2018<br>CHECKED    JAB    1/9/2018<br>APPD.    JFM    1/9/2018 | PART CODE    C25342<br>SIZE    C<br>SCALE    NTS<br>FILE NAME    630C2534-2.Dwg             | REV.    -<br>SHEET    1 OF 1 |