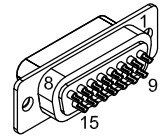


REV.		DESCRIPTION		REVISIONS		DRAWN	DATE

(TYPICAL)
TO
CONTROLLER
JOYSTICK
CONNECTOR



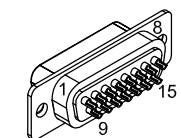
15 PIN MALE D-CON, ECK00100
BACK SHELL, ECK01022
ADD SCREWLOCKS

PIN	WIRE	WIRE	SIGNAL
8	-	-	-
7	-	-	-
6	PNK	-	2ND STAGE BASE TEMP.
5	-	-	-
4	GRN	GRN	COMMON
3	-	WHT	1ST STAGE BASE TEMP.
2	-	-	-
1	VIO	VIO	+5 VDC
CASE	SHIELD	SHIELD	SHIELD
9	-	-	-
10	-	-	-
11	-	-	-
12	-	-	-
13	-	-	-
14	-	-	-
15	-	-	-

ECX01279
#24 AWG x5

UNUSED WIRES:
PINK, GRY

PIN	WIRE	SIGNAL
8	-	-
7	-	-
6	-	-
5	-	-
4	GRN	COMMON
3	WHT	(1ST) STAGE BASE TEMP.
2	-	-
1	VIO	+5 VDC
CASE	SHIELD	SHIELD
9	-	-
10	-	-
11	-	-
12	-	-
13	-	-
14	-	-
15	-	-



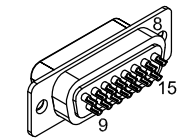
15 PIN FEMALE D (ECK00326)
BACKSHELL (ECK01022)
JACKSOCKETS (ECK00129)

1st STAGE

ECX01279
#24 AWG x5

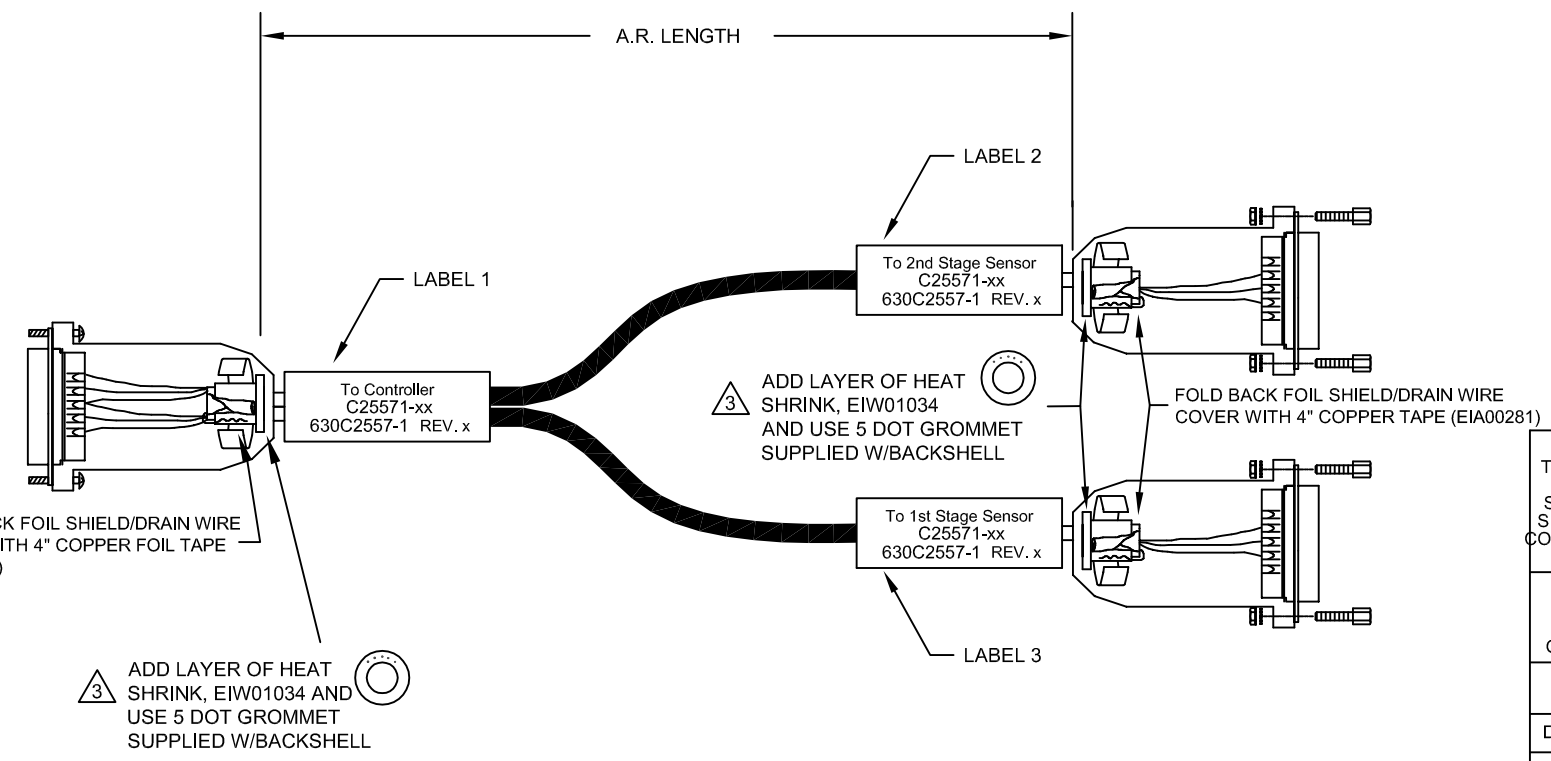
UNUSED WIRES:
WHT, GRY

PIN	WIRE	SIGNAL
8	-	-
7	-	-
6	-	-
5	-	-
4	GRN	COMMON
3	PNK	(2ND) STAGE BASE TEMP.
2	-	-
1	VIO	+5 VDC
CASE	SHIELD	SHIELD
9	-	-
10	-	-
11	-	-
12	-	-
13	-	-
14	-	-
15	-	-



15 PIN FEMALE D (ECK00326)
BACKSHELL (ECK01022)
JACKSOCKETS (ECK00129)

2nd STAGE



- 3 VERIFY GROMMET IS SECURED TIGHTLY AROUND CABLE. IF NECESSARY BUILD UP WITH SHRINK TUBING.
- 2 ADD LABELS, 3 PLS.
 - CABLE DESCRIPTION
 - CABLE NAME AND LENGTH IN DECIMETERS (xx) → (SEE LABEL 1, 2 & 3) C25571-xx
 - LABEL EIA00113 TEXT STYLE: PRESTIGE PICA 10pt
 - DRAWING NUMBER → 630C2557-1 REV. x
 - CURRENT REVISION x
- 1 STARTING CABLE LENGTH SHOULD BE 3 IN LONGER THAN TOTAL LENGTH OF CABLE. LENGTH OF CABLE IS DESIGNATED BY THE (xx) IN CABLE NAME.

PROPRIETARY INFORMATION
THIS DRAWING IS THE PROPERTY
OF AEROTECH, INC. AND IS
SUBMITTED IN CONFIDENCE AND
SHALL NOT BE REPRODUCED NOR
COPIED NOR DISCLOSED TO OTHERS
UNDER PENALTY OF LAW.

AEROTECH®
AEROTECH, INC. 101 Zeta Drive
Pittsburgh, PA. 15238
(412)963-7470
www.aerotech.com

TOLERANCES ON
FRACTIONS DECIMALS ANGLES
0 TO 6 ±1/32 .XX ±.01 ± 0-30'
OVER 6 ± 1/16 .XXX ±.005

RMS FINISH ✓ EXCEPT AS NOTED

**TCOMP
ADAPTER/SPLITTER
CABLE: TCOMP 15D-15D 15D**

DRAWN	JFM	3/30/2016	PART CODE	SIZE	REV.
CHECKED	JAB	3/30/2016	C25571-xx	C	630C2557-1
APPD.	JFM	3/30/2016	SCALE	FILE NAME	630C2557-1.Dwg
			SHEET	1 OF 1	