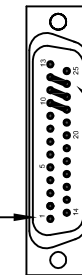


REVISIONS			
REV.	DESCRIPTION	DATE	DRAWN
A	ADDED ECO 69	8/28/2017	JFM

PIN	WIRE	SIGNAL
13	-	-
12	WHT/BRN	CW+LMT
11	-	-
10	-	-
9	-	-
8	-	-
7	ORN	MRK
6	WHT/ORN	MKR-N
5	-	-
4	WHT/GRN	ID
3	WHT	ENC +5V
	VIO	
	BRN	
2	RED	THERMISTOR
1	-	-
CASE	SHIELD/DRAIN	SHIELD
14	YEL	COS
15	WHT/YEL	COS-N
16	-	-
17	BLU	SIN
18	WHT/BLU	SIN-N
19	-	-
20	GRY	LMT COM
21	BLK	ENC COM
	GRN	
22	-	-
23	-	-
24	WHT/GRY	CCW+LMT
25	-	-

SIGNAL	WIRE	PIN
-	-	13
ØB	JMP TO PIN 24	12
ØA	JMP TO PIN 23	11
ØA, ØB RETURN	JMP TO PIN 22	10
-	-	9
-	-	8
CCW+LMT	WHT/GRY	7
LMT COM	GRY	6
ENC COM	BLK	5
	GRN	
MRK-N	WHT/ORN	4
SIN-N	WHT/BLU	3
COS-N	WHT/YEL	2
KEY	KEY	1
BOTH SHIELDS, FRAME	* #20 GRN/YEL	CASE
COS	YEL	14
SIN	BLU	15
MRK	ORN	16
ENC +5V	WHT	17
	VIO	
	BRN	
ID	WHT/GRN	18
CW+LMT	WHT/BRN	19
THERMISTOR	RED	20
-	-	21
ØA, ØB RETURN	* #20 WHT	22
ØA	* #20 BLK	23
ØB	* #20 RED	24
-	-	25

25-PIN D, FEMALE, ECK00300
BACKSHELL + SCREWLOCKS, ECK00656
WIRE SIDE VIEW



ADD GOLD JUMPER
EIK00351, 3 PLS.

ADD GOLD JUMPER
EIK00351, 3 PLS.

25-PIN D, MALE, ECK00786
BACKSHELL, ECK00656
ADD SCREWLOCKS

WIRE SIDE VIEW



PIN 1

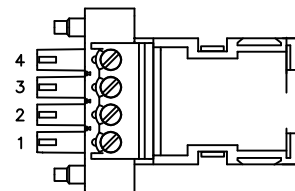
ECX01009
16 COND., #24

ECX01217
4 COND., #20

UNUSED WIRES:
NONE

* DENOTES FROM ECX01217 CABLE

LABEL	WIRE	SIGNAL
4	#20 WHT	ØA, ØB RETURN
3	#20 RED	ØB
2	#20 BLK	ØA
1	#20 GRN/YEL	FRAME



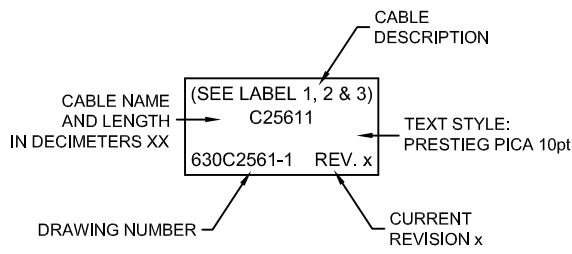
4 PIN TERMINAL BLOCK W/COVER ECK01523
HOUSING, ECK01520



MULTIPLE WIRES TO A PIN
SOLDER SPLICE/HEATSHRINK. USE #24 WIRE.
VIO FOR 5V PINS, AND GRN FOR COMMON PINS



ADD THREE CABLE LABELS, EIA00113



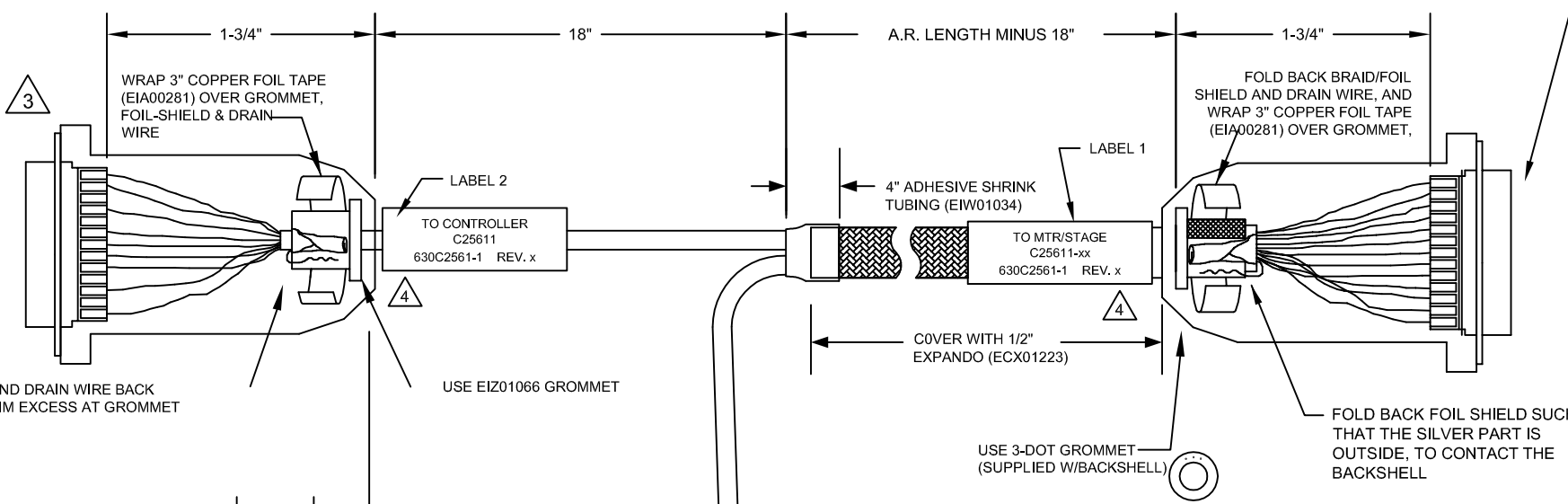
VERIFY GROMMET IS SECURED TIGHTLY AROUND
CABLE. IF NECESSARY BUILD UP WITH
SHRINK TUBING.



FOR CRIMP TOOL USE AMP HANDLE ASSY 58074-1
WITH AMP HEAD ASSY 58063-2



STARTING CABLE LENGTH SHOULD BE 5 IN
LONGER THAN TOTAL LENGTH OF CABLE. LENGTH
OF CABLE IS DESIGNATED BY THE (XX) IN
CABLE NAME.



FOLD FOIL SHIELD AND DRAIN WIRE BACK
OVER GROMMET. TRIM EXCESS AT GROMMET
SHOULDER.

WIRE TIE (EIZ00418) TO COVER

FERRULES P/N: EIK01001
(4 PLC'S)

REMOVE INSULATION FROM #20
GRN/YEL WIRE AND
SOLDER SHIELD TO IT AND, COVER
WITH HEATSHRINK.

PROPRIETARY INFORMATION
THIS DRAWING IS THE PROPERTY
OF AEROTECH, INC. AND IS
SUBMITTED IN CONFIDENCE AND
SHALL NOT BE REPRODUCED NOR
COPIED NOR DISCLOSED TO OTHERS
UNDER PENALTY OF LAW.



AEROTECH, INC. 101 Zeta Drive
Pittsburgh, PA. 15238
(412)963-7470
www.aerotech.com

TOLERANCES ON		
FRACTIONS	DECIMALS	ANGLES
0 TO 6 ±1/32	.XX ±01	± 0-30°
OVER 6 ±1/16	.XXX ±005	

RMS FINISH	EXCEPT AS NOTED
✓	

DRAWN	AGR	10/02/2015
CHECKED	KMS	10/02/2015
APPD.	AGR	10/02/2015

MPS STEPPER STAGE TO Epaq FEEDBACK & MOTOR CABLE SM + FB-25D 4TS-25D-3.5ARMS-MAX110DM			
PART CODE	SIZE	REV.	
C25611	C	A	
630C2561-1			
SCALE NTS	FILE NAME	630C2561-1.Dwg	SHEET 1 OF 1