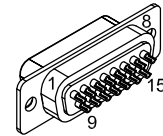


REVISIONS			
REV.	DESCRIPTION	DRAWN	DATE

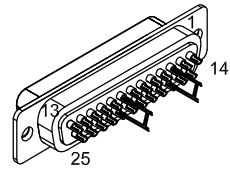
PIN	WIRE	SIGNAL
8	-	-
7	-	-
6	-	-
5	-	-
4	BLK	COMMON
3	WHT	STAGE BASE TEMP.
2	-	-
1	RED	+5 VDC
CASE	SHIELD	SHIELD
9	-	-
10	-	-
11	-	-
12	-	-
13	-	-
14	-	-
15	-	-



STAGE TCOMP

15 PIN FEMALE D ECK00326
BACKSHELL ECK01022
JACKSOCKETS ECK00129

TO
ML/MP
CONTROLLER
FEEDBACK



25 PIN MALE D-STYLE, ECK00101
BACKSHELL, ECK0656

GOLD JUMPER, EIK00351
3-16 AND 8-21

PIN	WIRE	WIRE	SIGNAL
CASE	SHIELD	SHIELD	SHIELD
1	#22 GRN/YEL	-	FRAME
2	WHT/GRY	-	THERMISTOR
3	#22 RED	RED	5 VDC
4	#24 VIO/WHT	-	RESERVED
5	#26 VIO/RED	-	HALL B
6	W/ORN	-	MRK-
7	ORN	-	MRK+
8	JUMPER TO PIN 21	-	ANALOG INPUT 0-
9	BRN	-	RESERVED
10	#24 GRN	-	HALL A
11	WHT/RED	-	HALL C
12	#24 VIO	-	CW EOT
13	#22 RED/ORN	-	BRAKE -
14	YEL	-	COS+
15	W/YEL	-	COS-
16	#22 BLK/ORN	-	5 VDC
17	BLU	-	SIN+
18	W/BLU	-	SIN-
19	-	WHT	ANALOG INPUT 0+
20	#22 WHT/ORN	-	LIMIT COMMON
21	#22 BLK	BLK	ENC COMMON
22	#26 GRN/RED	-	HOME INPUT
23	PNK	-	ENC FAULT
24	GRY	-	CCW EOT
25	#22 WHT	-	BRAKE +

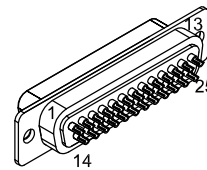
ECX01446
#28 AWG x4

UNUSED WIRE:
GRN

ECX01439
27 COND.
#28 AWG, UNLESS NOTED

INNER UNUSED WIRES:
#22 GRN/ORN, #24 GRN/WHT
OUTER UNUSED #28 WIRES:
WHT/BLK, WHT/BRN

SIGNAL	WIRE	PIN
SHIELD	SHIELD	CASE
FRAME	#22 GRN/YEL	1
THERMISTOR	WHT/GRY	2
5 VDC	#22 RED	3
RESERVED	#24 VIO/WHT	4
HALL B	#26 VIO/RED	5
MRK-	W/ORN	6
MRK+	ORN	7
ANALOG INPUT 0-	-	8
RESERVED	BRN	9
HALL A	#24 GRN	10
HALL C	WHT/RED	11
CW EOT	#24 VIO	12
BRAKE -	#22 RED/ORN	13
COS+	YEL	14
COS-	W/YEL	15
5 VDC	#22 BLK/ORN	16
SIN+	BLU	17
SIN-	W/BLU	18
ANALOG INPUT 0+	-	19
LIMIT COMMON	#22 WHT/ORN	20
ENC COMMON	#22 BLK	21
HOME INPUT	#26 GRN/RED	22
ENC FAULT	PNK	23
CCW EOT	GRY	24
BRAKE +	#22 WHT	25



STAGE FEEDBACK

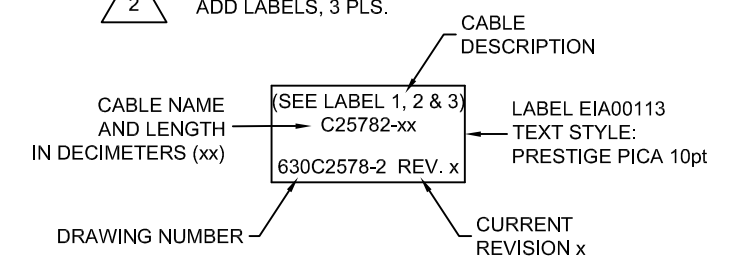
25 PIN FEMALE D-STYLE, ECK00300
BACKSHELL, ECK0656
JACK SOCKETS, ECK00129



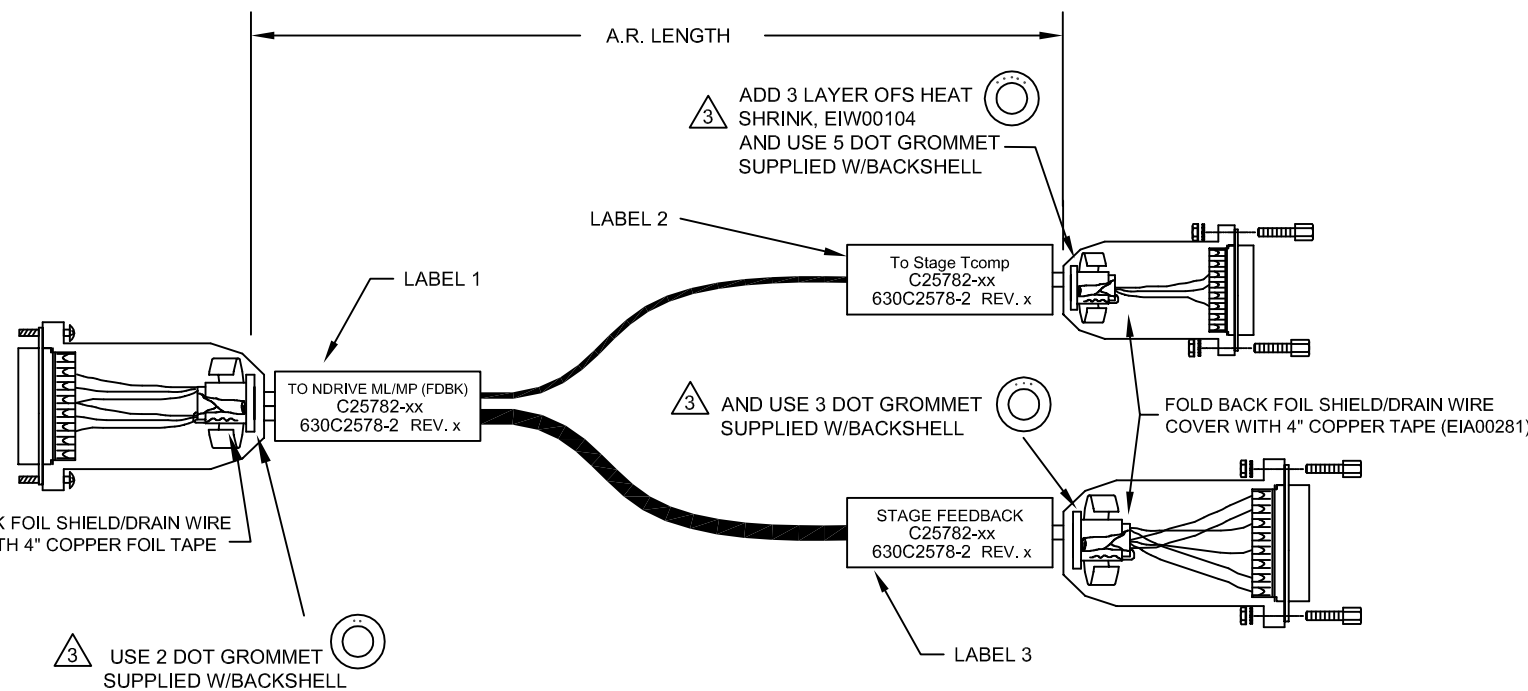
VERIFY GROMMET IS SECURED TIGHTLY AROUND CABLE. IF NECESSARY BUILD UP WITH SHRINK TUBING.



ADD LABELS, 3 PLS.



STARTING CABLE LENGTH SHOULD BE 4 IN LONGER THAN TOTAL LENGTH OF CABLE. LENGTH OF CABLE IS DESIGNATED BY THE (xx) IN CABLE NAME.



PROPRIETARY INFORMATION THIS DRAWING IS THE PROPERTY OF AEROTECH, INC. AND IS SUBMITTED IN CONFIDENCE AND SHALL NOT BE REPRODUCED NOR COPIED NOR DISCLOSED TO OTHERS UNDER PENALTY OF LAW.		
TOLERANCES ON FRACTIONS DECIMALS ANGLES 0 TO 6 ±1/32 .XX ±.01 ± 0-30' OVER 6 ± 1/16 .XXX ±.005		
RMS FINISH	✓	EXCEPT AS NOTED
DRAWN	JFM	8/26/2016
CHECKED	JAB	8/26/2016
APPD.	JFM	8/26/2016



AEROTECH, INC. 101 Zeta Drive
Pittsburgh, PA. 15238
(412)963-7470
www.aerotech.com

**TCOMP (FOR NDRIVE ML/MP
FEEDBACK TCOMP SPLITTER
CABLE: TCOMP 25D-25D 15D**

PART CODE	SIZE	REV.
C25782-xx	C	-
SCALE NTS	FILE NAME	SHEET
	630C2578-201.Dwg	1 OF 1