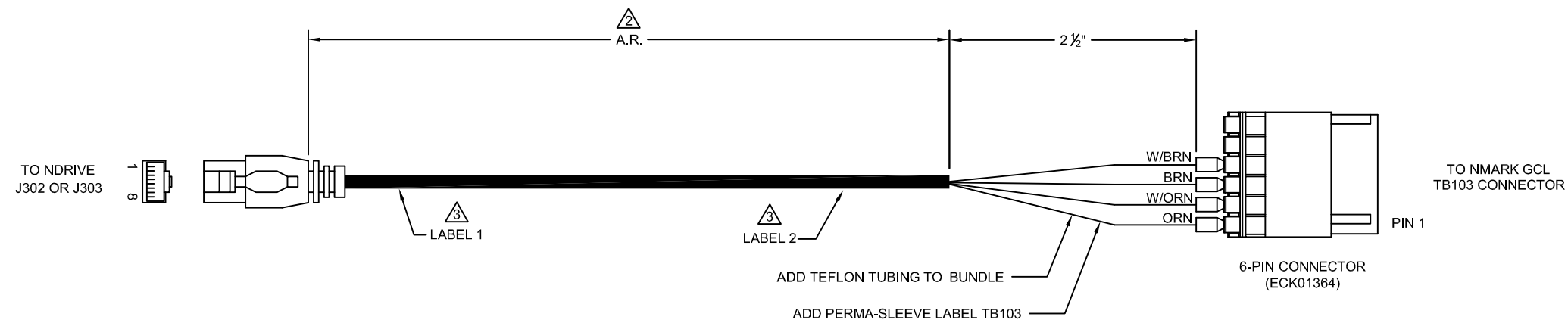
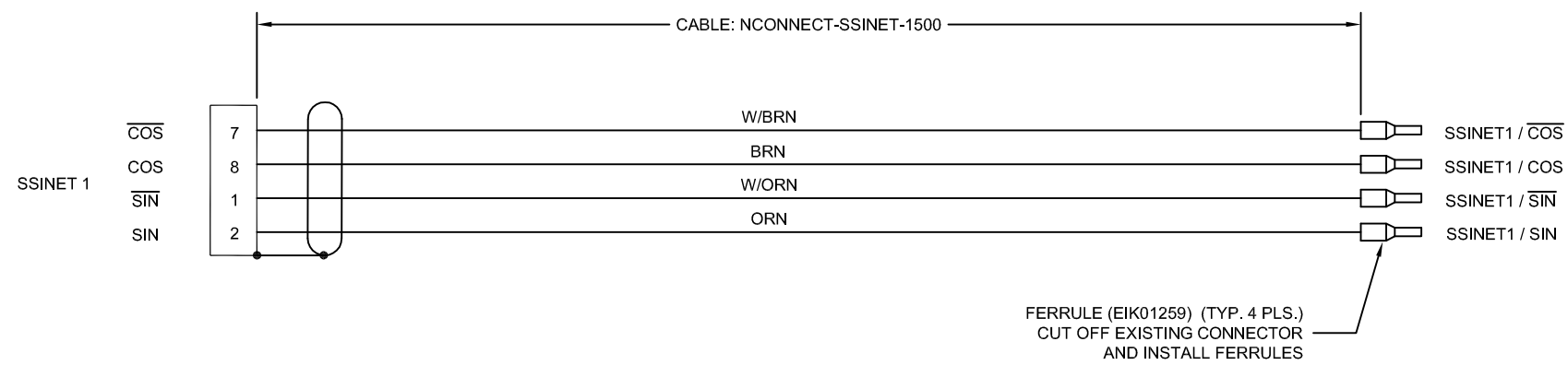


REVISIONS			
REV.	DESCRIPTION	DATE	DRAWN
A	INITIAL REV.	03/19	AFORREST



NOTES:

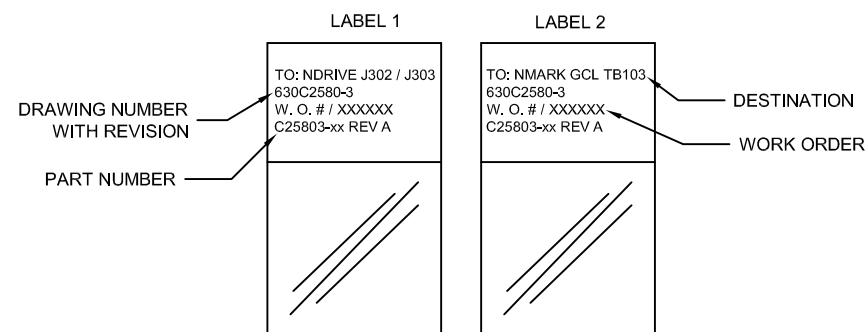
1 USE THE FOLLOWING FOR CABLE TOLERANCES


METRIC		IMPERIAL ENGLISH	
<0.3m	+25mm	<1ft	+1in
0.3m - 1.5m	+50mm	1ft - 5ft	+2in
1.5m - 3m	+100mm	5ft - 10ft	+4in
3m - 7.5m	+150mm	10ft - 25ft	+6in
>7.5m	+5%/0%	>25ft	+5%/0%

2 CABLE LENGTH

CABLE LENGTHS xx ARE IN DECIMETERS  
EXAMPLE: C25803-3  
3 = 3 DECIMETERS (300mm) = 1FT.

3 CABLE LABELS (EIA00113):  
2 REQUIRED, 1 AT EACH END.



PROPRIETARY INFORMATION THIS DRAWING IS THE PROPERTY OF AEROTECH, INC. AND IS SUBMITTED IN CONFIDENCE AND SHALL NOT BE REPRODUCED NOR COPIED NOR DISCLOSED TO OTHERS UNDER PENALTY OF LAW.			 AEROTECH, INC. 101 Zeta Drive Pittsburgh, PA. 15238 (412)963-7470 www.aerotech.com		
TOLERANCES ON FRACTIONS DECIMALS ANGLES 0 TO 6 ±1/32 .XX ±01 ± 0-30' OVER 6 ±1/16 .XXX ±005			<b>CABLE: SSI1-RJ45-6TS-MAX50DM</b> <b>NDRIVE SSI1 TO NMARK GCL TB103</b>		
RMS FINISH	✓	EXCEPT AS NOTED	PART CODE	SIZE	REV.
DRAWN	AF	03/19	C25803	C	A
CHECKED	ZGK	03/19	630C2580-3		
APPD.	JFM	03/19	SCALE NTS	FILE NAME 630C2580-3SHT1.Dwg	SHEET 1 OF 1