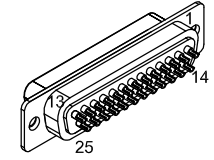


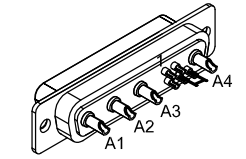
REVISIONS			
REV.	DESCRIPTION	DATE	DRAWN
A	ADDED ECO 69	8/29/2017	JFM



25 PIN MALE D-STYLE, ECK00101  
BACKSHELL, ECK00656

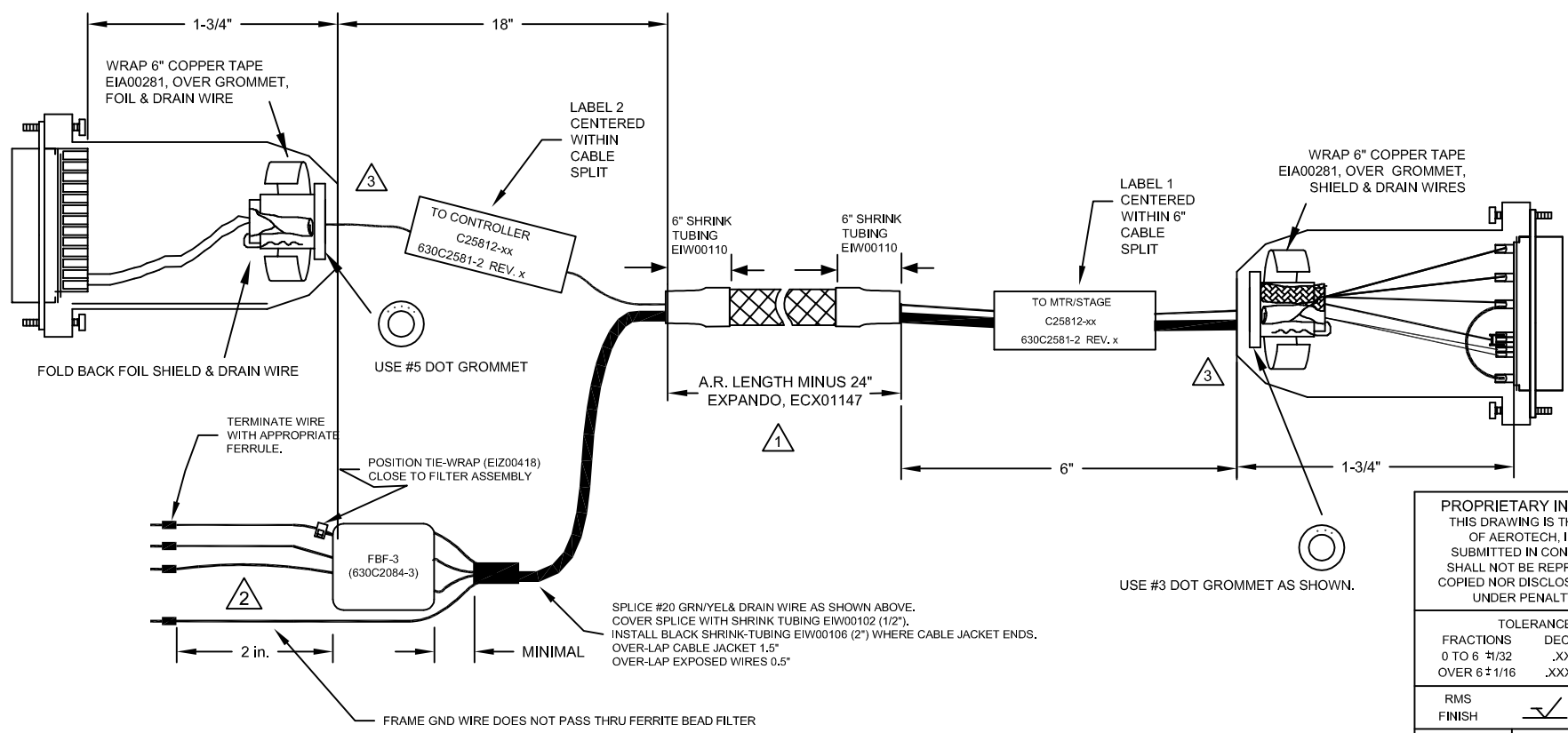
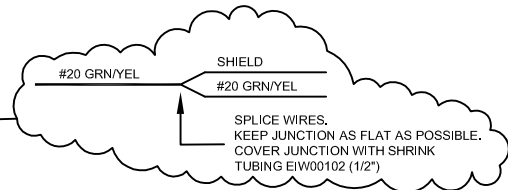
PIN	WIRE	SIGNAL
13	#22 BLK	BRK-
12	-	-
11	-	-
10	-	-
9	-	-
8	-	-
7	-	-
6	-	-
5	-	-
4	-	-
3	-	-
2	-	-
1	-	-
CASE	DRAIN WIRE	SIGNAL SHIELD
14	-	-
15	-	-
16	-	-
17	-	-
18	-	-
19	-	-
20	-	-
21	-	-
22	-	-
23	-	-
24	-	-
25	#22 RED	BRK+

SIGNAL	WIRE	PIN
MTR ØA	#20 BLK	A1
MTR ØB	#20 RED	A2
ØA RETURN	#20 JUMPER & #20 WHT	A3
ØB RETURN	#20 JUMPER	A4
SHIELD	FOIL & DRAIN WIRES	CASE
BRK-	#22 BLK	1
BRK+	#22 RED	2
-	-	3
FRM	#20 GRN/YEL & JUMPER	4
FRM	JUMPER	5

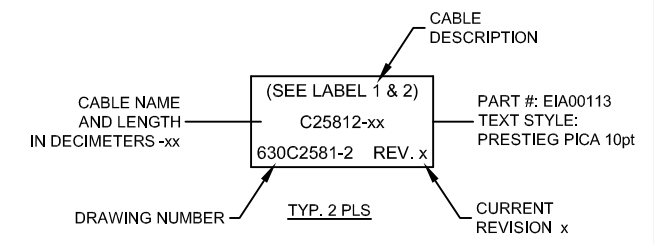


HPD FEMALE "D", ECK00657  
SOCKET CONTACT X4, ECK00659  
BACK SHELL, ECK00656

FERRULE	FBF-3	WIRE	SIGNAL
EIK01001	EIZ01027 X10	#20 BLK	MTR ØA
EIK01001	EIZ01027 X10	#20 RED	MTR ØB
EIK01001	EIZ01027 X10	#20 WHT	MTR ØC
EIK01001	-	#20 GRN/YEL	FRM GND
		SHIELD	MTR SHLD



- 3 VERIFY GROMMET IS SECURED TIGHTLY AROUND CABLE. IF NECESSARY BUILD UP WITH SHRINK TUBING.
- 2 APPLY EIA01161 LABEL SLEEVES TO IDENTIFYING THE MOTOR WIRES "A", "B", "C", & "G"
- 1 STARTING CABLE LENGTH SHOULD BE 8" IN LONGER THAN TOTAL LENGTH OF CABLE. LENGTH OF CABLE IS DESIGNATED BY THE xx IN CABLE NAME.



PROPRIETARY INFORMATION  
THIS DRAWING IS THE PROPERTY OF AEROTECH, INC. AND IS SUBMITTED IN CONFIDENCE AND SHALL NOT BE REPRODUCED NOR COPIED NOR DISCLOSED TO OTHERS UNDER PENALTY OF LAW.

TOLERANCES ON		
FRACTIONS	DECIMALS	ANGLES
0 TO 6 ±1/32	.XX ±01	± 0-30'
OVER 6 ±1/16	.XXX ±005	

RMS FINISH	✓	EXCEPT AS NOTED
------------	---	-----------------

DRAWN	JFM	10/20/16
CHECKED	JAB	10/20/16
APPD.	JFM	10/20/16

**AEROTECH** © AEROTECH, INC. 101 Zeta Drive  
Pittsburgh, PA. 15238  
www.aerotech.com

**C25812-xx**  
SM MTR-FLB 25D-4D-3.5ARMS-MAX450DM

PART CODE	SIZE	REV.
C25812	C	A

SCALE	NTS	FILE NAME	630C2581-2.Dwg	SHEET	1 OF 1
-------	-----	-----------	----------------	-------	--------