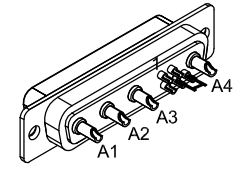
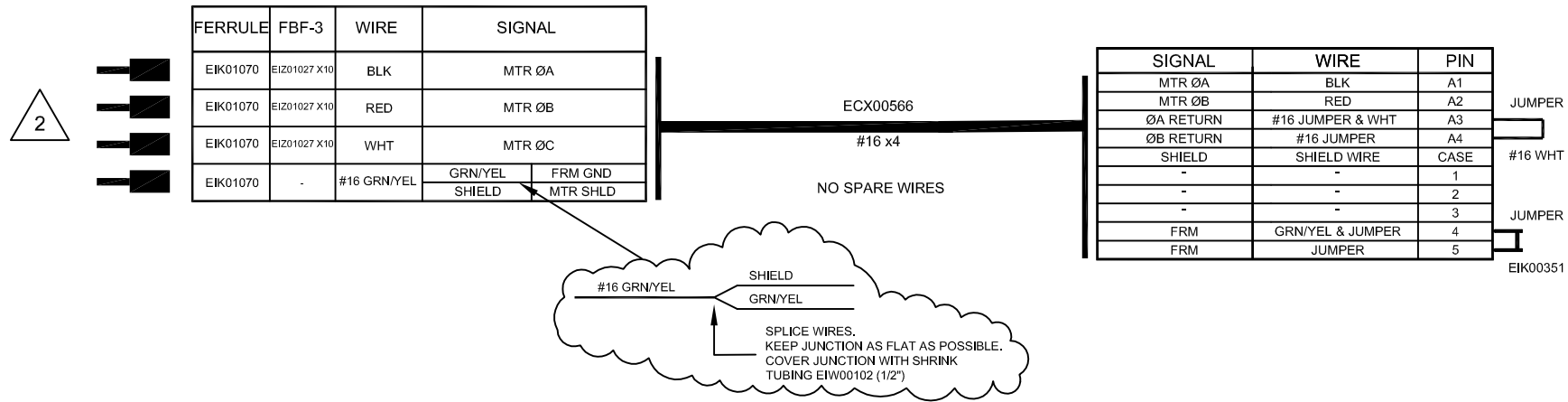
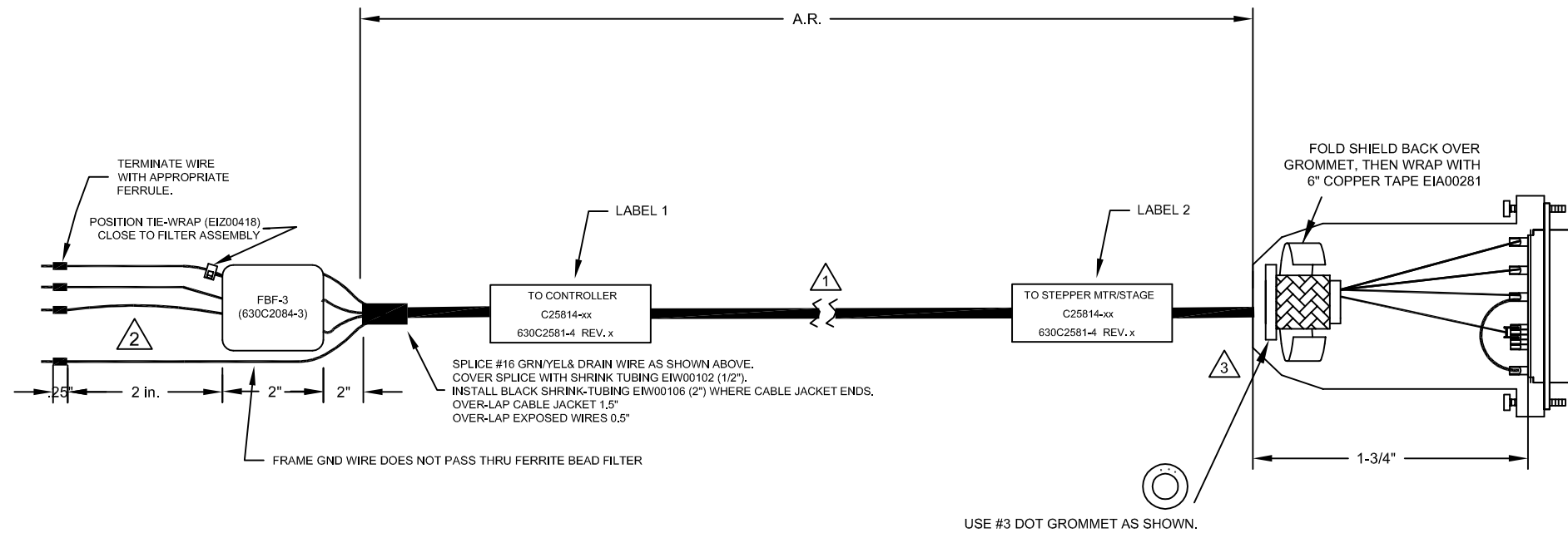


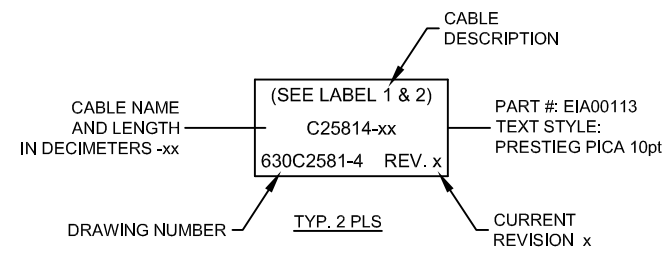
REVISIONS			
REV.	DESCRIPTION	DATE	DRAWN



HPD FEMALE "D", ECK00657
SOCKET CONTACT X4, ECK00659
BACK SHELL, ECK00656



- 3 VERIFY GROMMET IS SECURED TIGHTLY AROUND CABLE. IF NECESSARY BUILD UP WITH SHRINK TUBING.
- 2 APPLY EIA01161 LABEL SLEEVES TO IDENTIFYING THE MOTOR WIRES "A", "B", "C", & "G"
- 1 STARTING CABLE LENGTH SHOULD BE 8" IN LONGER THAN TOTAL LENGTH OF CABLE. LENGTH OF CABLE IS DESIGNATED BY THE xx IN CABLE NAME.



PROPRIETARY INFORMATION THIS DRAWING IS THE PROPERTY OF AEROTECH, INC. AND IS SUBMITTED IN CONFIDENCE AND SHALL NOT BE REPRODUCED NOR COPIED NOR DISCLOSED TO OTHERS UNDER PENALTY OF LAW.		AEROTECH, INC. 101 Zeta Drive Pittsburgh, PA. 15238 www.aerotech.com	
TOLERANCES ON FRACTIONS DECIMALS ANGLES 0 TO 6 1/32 .XX ±01 ± 0-30° OVER 6 ±1/16 .XXX ±005		C25814-xx SM MTR-FLB-4DU-7ARMS-MAX450DM	
RMS FINISH	✓	EXCEPT AS NOTED	
DRAWN	JFM	3/14/17	PART CODE
CHECKED	AGS	3/14/17	SIZE
APPD.	JFM	3/14/17	SCALE NTS
FILE NAME		SHEET	
630C2581-4.Dwg		1 OF 1	
DRAWN		REV.	
C25814-xx		-	
C		630C2581-4	