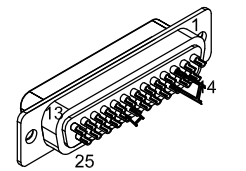


REVISIONS			
REV.	DESCRIPTION	DATE	DRAWN
A	ADDED ECO 69	8/29/2017	JFM



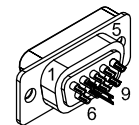
25 PIN MALE D-STYLE, ECK00101
BACKSHELL, ECK00656

PIN	WIRE	SIGNAL
13	#22 BLK	BRK-
12	#24 WHT	CW/+ LMT
11	-	-
10	-	-
9	-	-
8	-	-
7	-	-
6	-	-
5	-	-
4	#24 PNK	ID
3	JUMPER	ENC +5V
2	-	-
1	-	-
CASE	FOIL & DRAIN WIRE	SIGNAL SHIELD
14	-	-
15	-	-
16	JUMPER & #24 VIO	LMT +5V
17	-	-
18	-	-
19	-	-
20	JUMPER & #24 GRN	LMT COM
21	JUMPER	ENC COM
22	-	-
23	-	-
24	#24 GRY	CCW/- LMT
25	#22 RED	BRK+

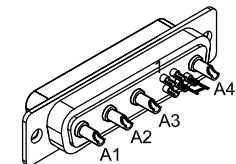
FERRULE	FBF-3	WIRE	SIGNAL
EIK01070	EIZ01027 X10	#16 BLK	MTR ØA
EIK01070	EIZ01027 X10	#16 RED	MTR ØB
EIK01070	EIZ01027 X10	#16 WHT	MTR ØC
EIK01070	-	#16 GRN/YEL	#16 GRN/YEL SHIELD
			FRM GND MTR SHLD

SIGNAL	WIRE	PIN
+5	#24 VIO	1
COM	JUMPER, #24 GRN	2
CW / +	#24 WHT	3
-	-	4
CCW / -	#24 GRY	5
-	-	6
COM	JUMPER	7
ID	#24 PNK	8
-	-	9
SHIELD	FOIL & DRAIN WIRE	CASE

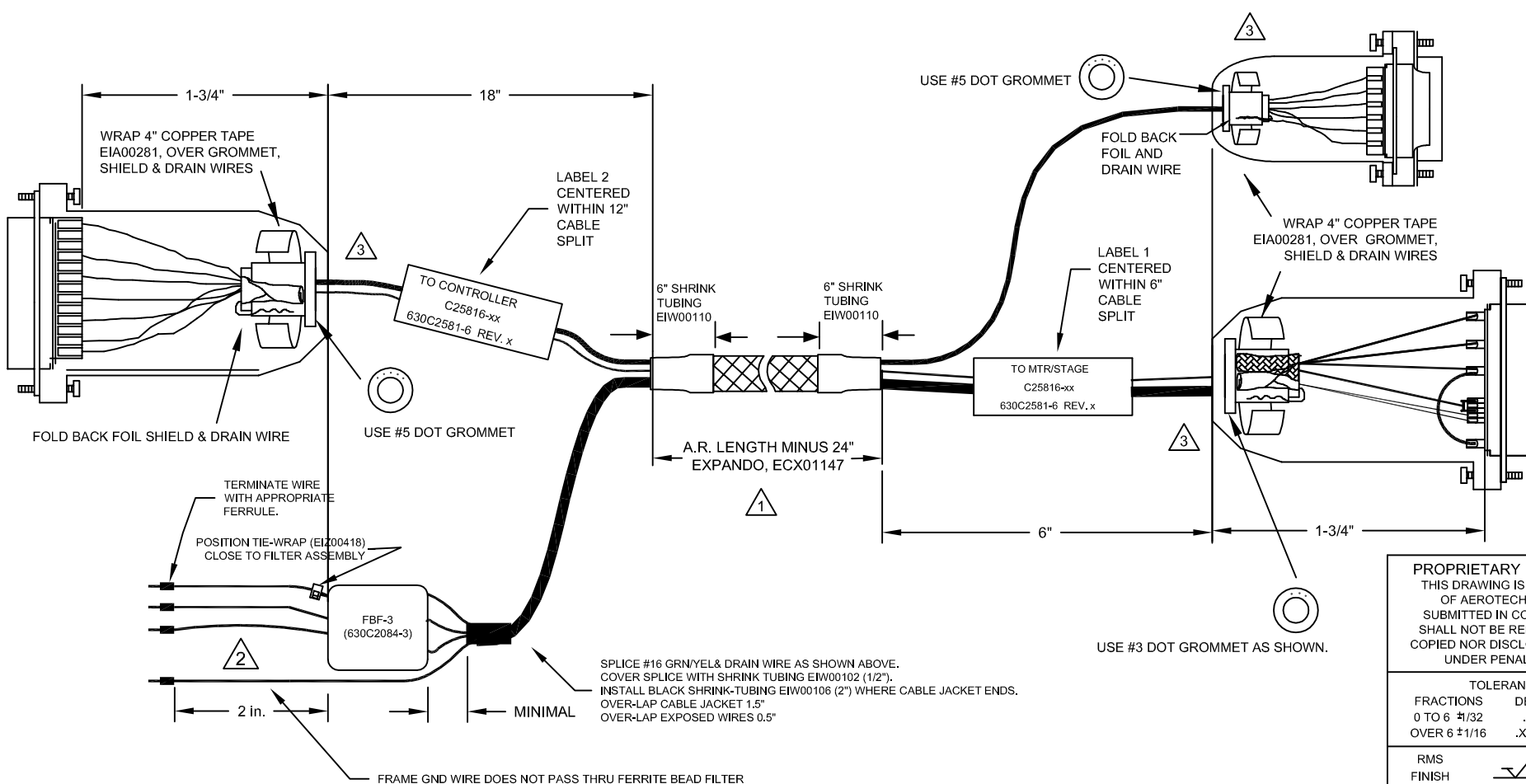
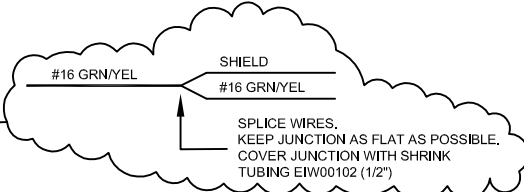
SIGNAL	WIRE	PIN
MTR ØA	#16 BLK	A1
MTR ØB	#16 RED	A2
ØA RETURN	#16 JUMPER & #16 WHT	A3
ØB RETURN	#16 JUMPER	A4
SHIELD	FOIL & DRAIN WIRES	CASE
BRK-	#22 BLK	1
BRK+	#22 RED	2
-	-	3
FRM	#16 GRN/YEL & JUMPER	4
FRM	JUMPER	5



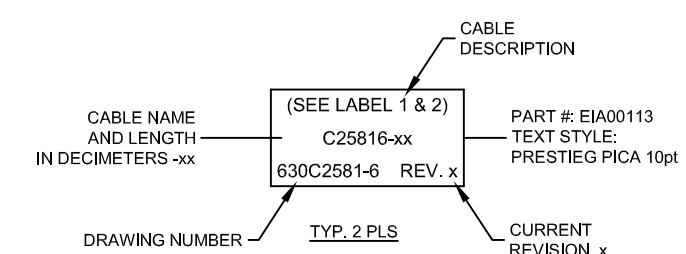
9 PIN FEMALE D, ECK00340
BACKSHELL, ECK01021



HPD FEMALE "D", ECK00657
SOCKET CONTACT X4, ECK00659
BACK SHELL, ECK00656



- 3 VERIFY GROMMET IS SECURED TIGHTLY AROUND CABLE. IF NECESSARY BUILD UP WITH SHRINK TUBING.
- 2 APPLY EIA01161 LABEL SLEEVES TO IDENTIFYING THE MOTOR WIRES "A", "B", "C", & "G"
- 1 STARTING CABLE LENGTH SHOULD BE 8" IN LONGER THAN TOTAL LENGTH OF CABLE. LENGTH OF CABLE IS DESIGNATED BY THE xx IN CABLE NAME.



PROPRIETARY INFORMATION
THIS DRAWING IS THE PROPERTY OF AEROTECH, INC. AND IS SUBMITTED IN CONFIDENCE AND SHALL NOT BE REPRODUCED NOR COPIED NOR DISCLOSED TO OTHERS UNDER PENALTY OF LAW.

AEROTECH
© AEROTECH, INC. 101 Zeta Drive
Pittsburgh, PA. 15238
www.aerotech.com

TOLERANCES ON FRACTIONS DECIMALS ANGLES
0 TO 6 ±1/32 .XX ±01 ± 0-30'
OVER 6 ±1/16 .XXX ±005

RMS FINISH ✓ EXCEPT AS NOTED

DRAWN JFM 10/20/16
CHECKED JAB 10/20/16
APPD. JFM 10/20/16

PART CODE C25816
SIZE C
SCALE NTS
FILE NAME 630C2581-6.Dwg
SHEET 1 OF 1

REV. A

C25816-xx
SM MTR-FLB 25D-4D-9DU-7ARMS-MAX147DM

630C2581-6