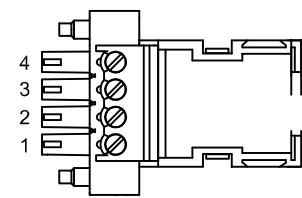


REVISIONS			
REV.	DESCRIPTION	DATE	DRAWN

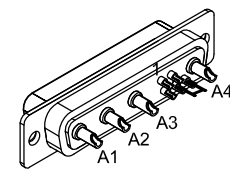
2



LABEL	WIRE	SIGNAL
4	WHT	ØA, ØB RETURN
3	RED	ØB
2	BLK	ØA
1	GRN/YEL	FRAME

ECX01217
#20 x4
NO SPARE WIRES

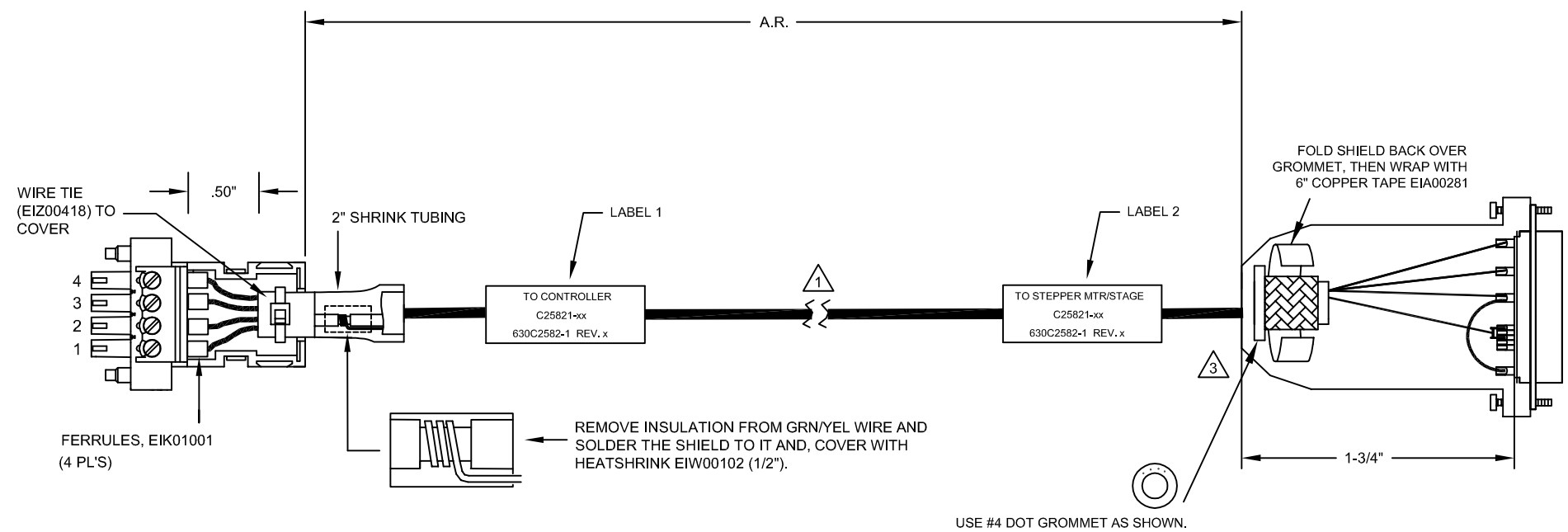
SIGNAL	WIRE	PIN
MTR ØA	BLK	A1
MTR ØB	RED	A2
ØA RETURN	#20 JUMPER & WHT	A3
ØB RETURN	#20 JUMPER	A4
SHIELD	SHIELD WIRE	CASE
-	-	1
-	-	2
-	-	3
FRM	GRN/YEL & JUMPER	4
FRM	JUMPER	5



HPD FEMALE "D", ECK00657
SOCKET CONTACT X4, ECK00659
BACK SHELL, ECK00656

#20 FERRULES, EIK01001
4 PIN TERMINAL BLOCK W/COVER, ECK01523
HOUSING, ECK01520

EIK00351

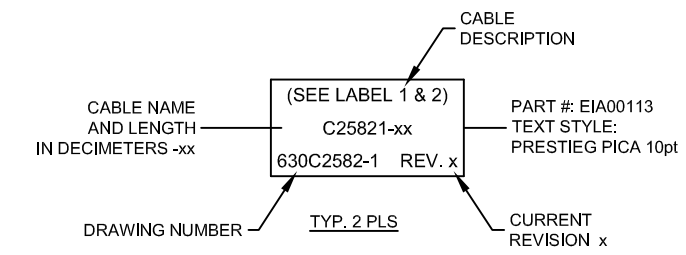


3

VERIFY GROMMET IS SECURED TIGHTLY AROUND CABLE. IF NECESSARY BUILD UP WITH SHRINK TUBING.

1

STARTING CABLE LENGTH SHOULD BE 8" IN LONGER THAN TOTAL LENGTH OF CABLE. LENGTH OF CABLE IS DESIGNATED BY THE xx IN CABLE NAME.



PROPRIETARY INFORMATION
THIS DRAWING IS THE PROPERTY OF AEROTECH, INC. AND IS SUBMITTED IN CONFIDENCE AND SHALL NOT BE REPRODUCED NOR COPIED NOR DISCLOSED TO OTHERS UNDER PENALTY OF LAW.



© AEROTECH, INC. 101 Zeta Drive
Pittsburgh, PA. 15238
www.aerotech.com

TOLERANCES ON		
FRACTIONS	DECIMALS	ANGLES
0 TO 6 1/32	.XX ±01	± 0-30°
OVER 6 1/16	.XXX ±005	

C25821-xx
SM MTR-4TS-4DU-3.5ARMS-MAX450DM

RMS FINISH EXCEPT AS NOTED

DRAWN	JFM	3/14/17
CHECKED	AGS	3/14/17
APPD.	JFM	3/14/17

PART CODE	SIZE	REV.
C25821-xx	C	-
SCALE NTS	FILE NAME	SHEET
	630C2582-1.Dwg	1 OF 1