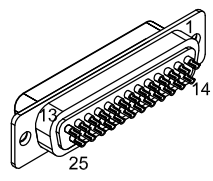


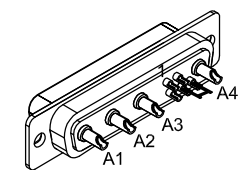
REVISIONS			
REV.	DESCRIPTION	DATE	DRAWN
A	ADDED ECO 69	8/29/2017	JFM



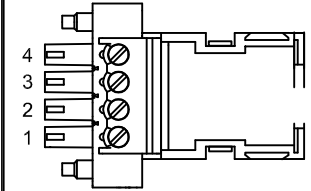
25 PIN MALE D-STYLE, ECK00101
BACKSHELL, ECK00656

PIN	WIRE	SIGNAL
13	#22 BLK	BRK-
12	-	-
11	-	-
10	-	-
9	-	-
8	-	-
7	-	-
6	-	-
5	-	-
4	-	-
3	-	-
2	-	-
1	-	-
CASE	DRAIN WIRE	SIGNAL SHIELD

SIGNAL	WIRE	PIN
MTR ØA	#20 BLK	A1
MTR ØB	#20 RED	A2
ØA RETURN	#20 JUMPER & #20 WHT	A3
ØB RETURN	#20 JUMPER	A4
SHIELD	FOIL & DRAIN WIRES	CASE
BRK-	#22 BLK	1
BRK+	#22 RED	2
-	-	3
FRM	#20 GRN/YEL & JUMPER	4
FRM	JUMPER	5

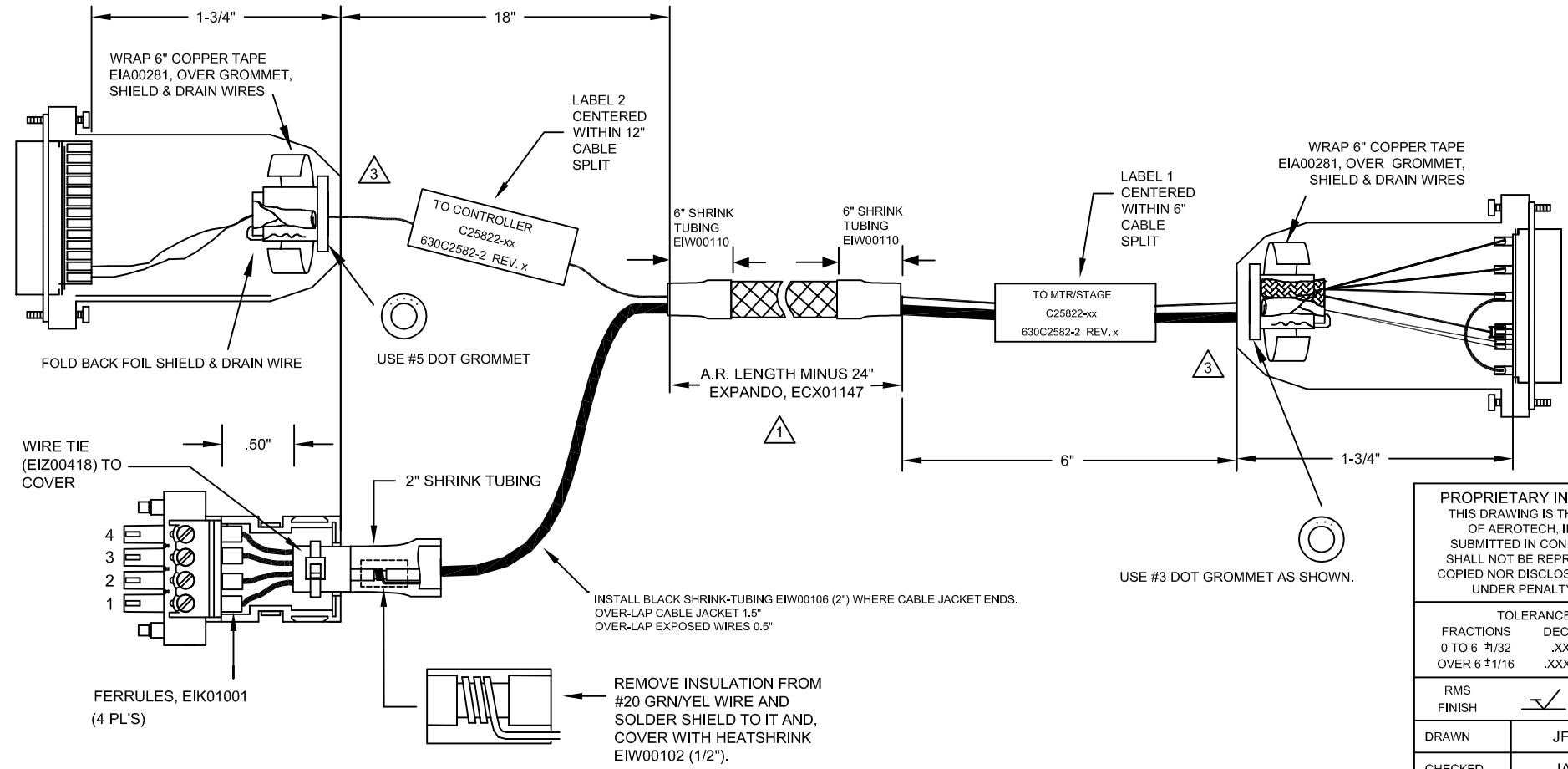
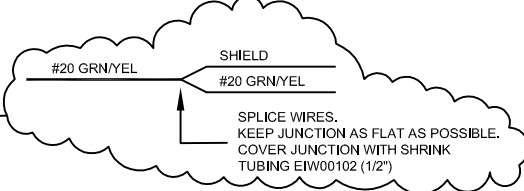


HPD FEMALE "D", ECK00657
SOCKET CONTACT X4, ECK00659
BACK SHELL, ECK00656



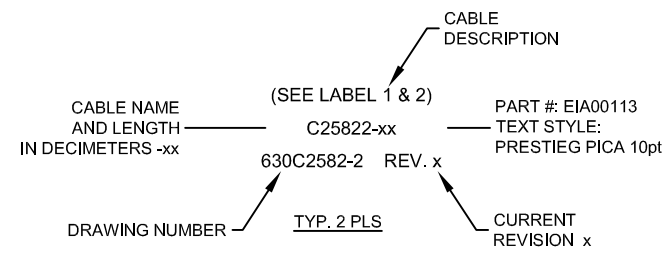
#20 FERRULES, EIK01001
4 PIN TERMINAL BLOCK W/COVER, ECK01523
HOUSING, ECK01520

LABEL	WIRE	SIGNAL
4	#20 WHT	ØA, ØB RETURN
3	#20 RED	ØB
2	#20 BLK	ØA
1	#20 GRN/YEL	FRAME



3 VERIFY GROMMET IS SECURED TIGHTLY AROUND CABLE. IF NECESSARY BUILD UP WITH SHRINK TUBING.

1 STARTING CABLE LENGTH SHOULD BE 8" IN LONGER THAN TOTAL LENGTH OF CABLE. LENGTH OF CABLE IS DESIGNATED BY THE xx IN CABLE NAME.



PROPRIETARY INFORMATION THIS DRAWING IS THE PROPERTY OF AEROTECH, INC. AND IS SUBMITTED IN CONFIDENCE AND SHALL NOT BE REPRODUCED NOR COPIED NOR DISCLOSED TO OTHERS UNDER PENALTY OF LAW.			AEROTECH, INC. 101 Zeta Drive Pittsburgh, PA. 15238 www.aerotech.com	
C25822-xx SM MTR-4TS 25D-4D-3.5ARMS-MAX450DM				
TOLERANCES ON FRACTIONS 0 TO 6 ±1/32 OVER 6 ±1/16 DECIMALS .XX ±01 .XXX ±005 ANGLES ± 0-30°		RMS FINISH ✓ EXCEPT AS NOTED		PART CODE C25822 SIZE C 630C2582-2 REV. A
DRAWN JFM 10/31/16 CHECKED JAB 10/31/16 APPD. JFM 10/31/16	SCALE NTS FILE NAME 630C2582-2.Dwg SHEET 1 OF 1			