

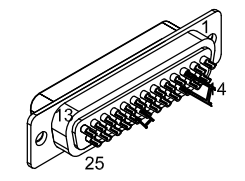
REV.		DESCRIPTION	DATE	DRAWN
A		ADDED ECO 69	8/29/2017	JFM

PIN	WIRE	SIGNAL
13	#22 BLK	BRK-
12	#24 WHT	CW/+ LMT
11	-	-
10	-	-
9	-	-
8	-	-
7	-	-
6	-	-
5	-	-
4	#24 PNK	ID
3	JUMPER	ENC +5V
2	-	-
1	-	-
CASE	ZIPPERTUBE DRAIN	SIGNAL SHIELD

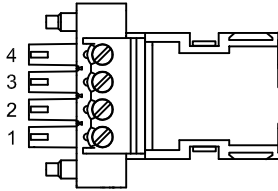
SIGNAL	WIRE	PIN
+5	#24 VIO	1
COM	JUMPER, #24 GRN	2
CW / +	#24 WHT	3
-	-	4
CCW / -	#24 GRY	5
-	-	6
COM	JUMPER	7
ID	#24 PNK	8
-	-	9
SHIELD	FOIL & DRAIN WIRE	CASE

SIGNAL	WIRE	PIN
MTR ØA	#20 BLK	A1
MTR ØB	#20 RED	A2
ØA RETURN	#20 JUMPER & #20 WHT	A3
ØB RETURN	#20 JUMPER	A4
SHIELD	FOIL & DRAIN WIRES	CASE
BRK-	#22 BLK	1
BRK+	#22 RED	2
-	-	3
FRM	#20 GRN/YEL & JUMPER	4
FRM	JUMPER	5

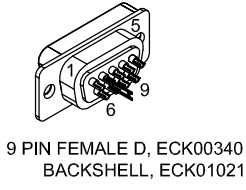
LABEL	WIRE	SIGNAL
4	#20 WHT	ØA, ØB RETURN
3	#20 RED	ØB
2	#20 BLK	ØA
1	#20 GRN/YEL	FRAME



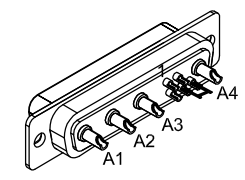
25 PIN MALE D-STYLE, ECK00101
BACKSHELL, ECK00656



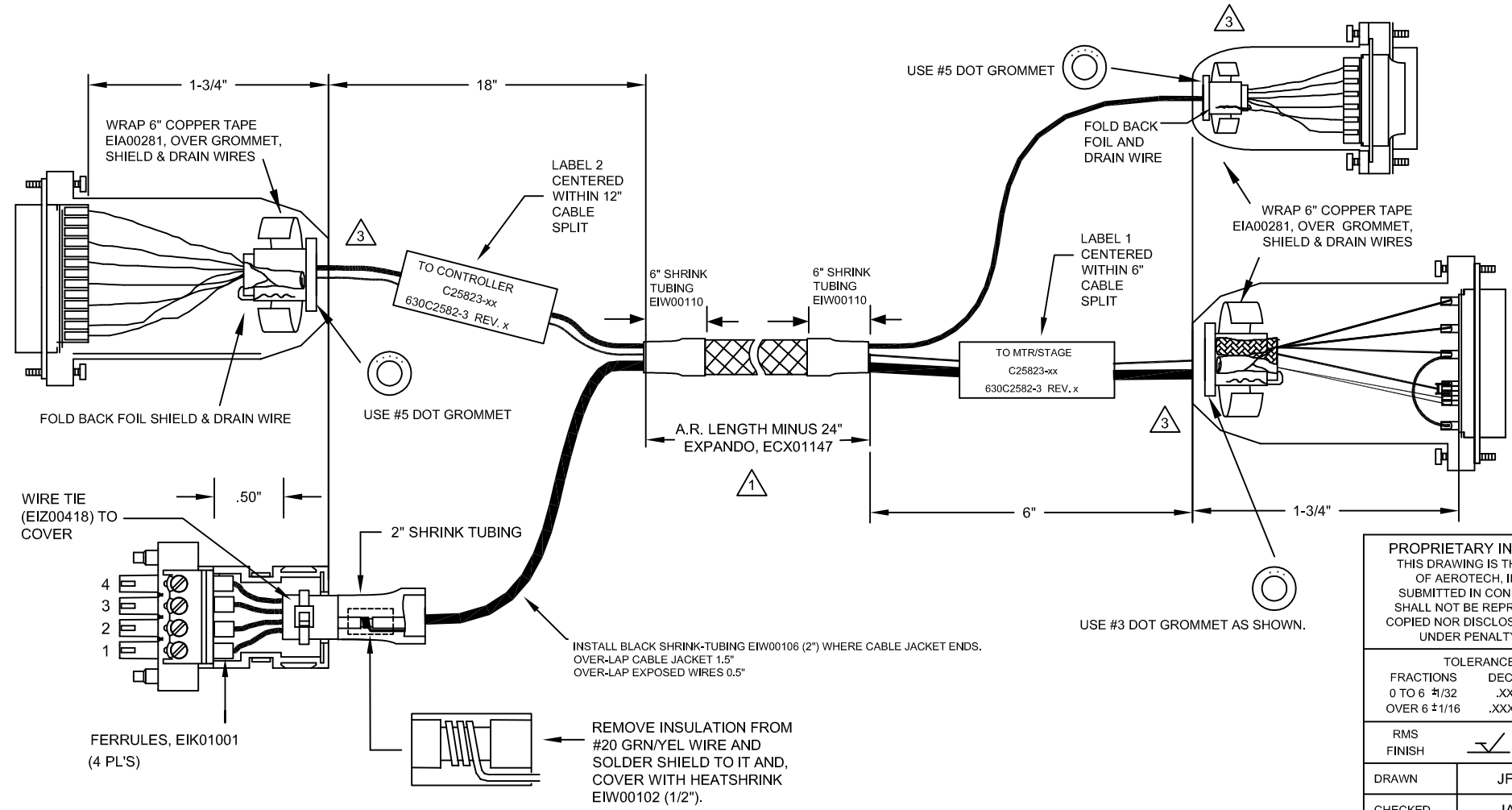
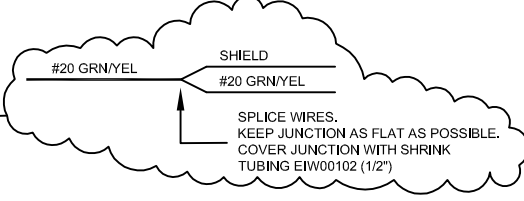
#20 FERRULES, EIK01001
4 PIN TERMINAL BLOCK W/COVER ECK01523
HOUSING, ECK01520



9 PIN FEMALE D, ECK00340
BACKSHELL, ECK01021

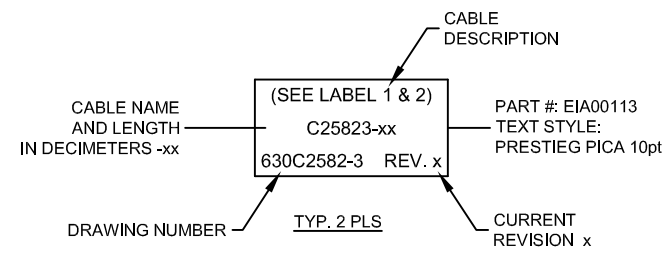


HPD FEMALE "D", ECK00657
SOCKET CONTACT X4, ECK00659
BACK SHELL, ECK00656



3 VERIFY GROMMET IS SECURED TIGHTLY AROUND CABLE. IF NECESSARY BUILD UP WITH SHRINK TUBING.

1 STARTING CABLE LENGTH SHOULD BE 8" IN LONGER THAN TOTAL LENGTH OF CABLE. LENGTH OF CABLE IS DESIGNATED BY THE xx IN CABLE NAME.



PROPRIETARY INFORMATION
THIS DRAWING IS THE PROPERTY OF AEROTECH, INC. AND IS SUBMITTED IN CONFIDENCE AND SHALL NOT BE REPRODUCED NOR COPIED NOR DISCLOSED TO OTHERS UNDER PENALTY OF LAW.

AEROTECH
AEROTECH, INC. 101 Zeta Drive
Pittsburgh, PA. 15238
www.aerotech.com

TOLERANCES ON		
FRACTIONS	DECIMALS	ANGLES
0 TO 6 1/32	.XX ±01	± 0-30°
OVER 6 1/16	.XXX ±005	

C25823-xx
SM MTR-4TS 25D-4D-9D-3.5ARMS-MAX147DM

RMS FINISH	EXCEPT AS NOTED
<input checked="" type="checkbox"/>	

PART CODE	SIZE	REV.
C25823	C	A