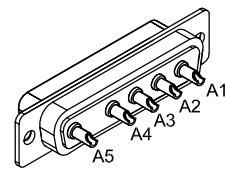


REVISIONS			
REV.	DESCRIPTION	DATE	DRAWN



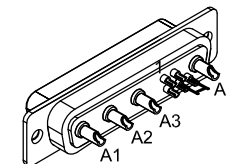
5 PIN MALE HPD, ECK01236
BACKSHELL, ECK00656

PIN	WIRE	SIGNAL
A1	BLK	MTR ØA
A2	RED	MTR ØB
A3	WHT	MTR ØC
A5	GRN/YEL	FRAME
CASE	SHIELD	SHIELD

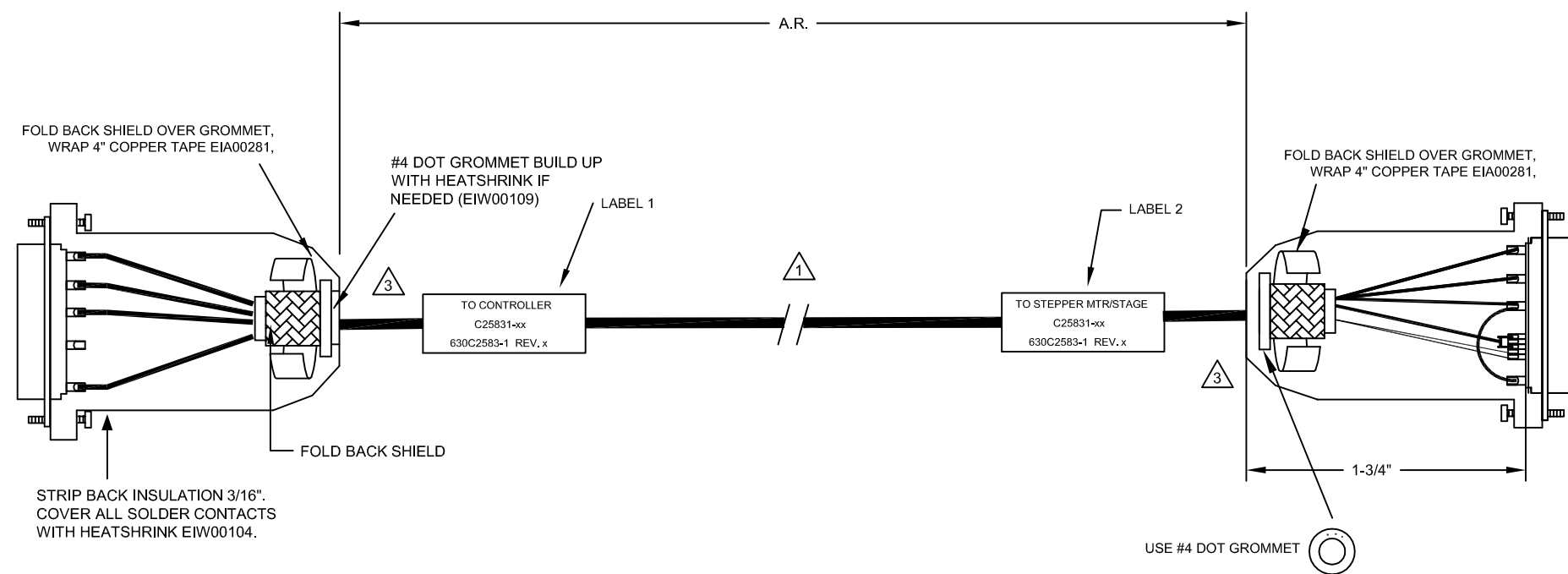
ECX01217
#20 x4
NO SPARE WIRES

SIGNAL	WIRE	PIN
MTR ØA	BLK	A1
MTR ØB	RED	A2
ØA RETURN	#20 JUMPER & WHT	A3
ØB RETURN	#20 JUMPER	A4
SHIELD	FOIL & DRAIN WIRES	CASE
-	-	1
-	-	2
-	-	3
FRM	GRN/YEL & JUMPER	4
FRM	JUMPER	5

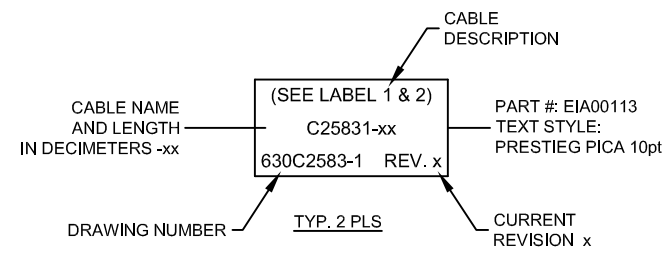
JUMPER
#20 WHT
JUMPER
EIK00351



4 PIN FEMALE HPD, ECK00657
SOCKET CONTACT X4, ECK00659
BACK SHELL, ECK00656



- 3 VERIFY GROMMET IS SECURED TIGHTLY AROUND CABLE. IF NECESSARY BUILD UP WITH SHRINK TUBING.
- 1 STARTING CABLE LENGTH SHOULD BE 8" IN LONGER THAN TOTAL LENGTH OF CABLE. LENGTH OF CABLE IS DESIGNATED BY THE xx IN CABLE NAME.



PROPRIETARY INFORMATION
THIS DRAWING IS THE PROPERTY OF AEROTECH, INC. AND IS SUBMITTED IN CONFIDENCE AND SHALL NOT BE REPRODUCED NOR COPIED NOR DISCLOSED TO OTHERS UNDER PENALTY OF LAW.

AEROTECH © AEROTECH, INC. 101 Zeta Drive
Pittsburgh, PA. 15238
www.aerotech.com

TOLERANCES ON
FRACTIONS DECIMALS ANGLES
0 TO 6 ±1/32 .XX ±01 ± 0-30°
OVER 6 ±1/16 .XXX ±005

RMS FINISH EXCEPT AS NOTED

C25831-xx
SM MTR-5DU-4DU-3.5ARMS-MAX450DM

DRAWN	JFM	3/14/17	PART CODE	SIZE	REV.
CHECKED	AGS	3/14/17	C25831-xx	C	-
APPD.	JFM	3/14/17	SCALE NTS	FILE NAME	630C2583-1.Dwg
			SHEET	1 OF 1	