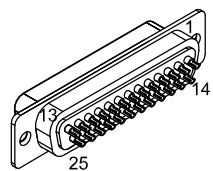


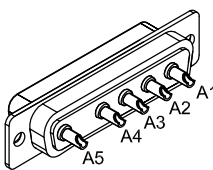
REVISIONS			
REV.	DESCRIPTION	DATE	DRAWN
A	ADDED ECO 69	8/29/2017	JFM



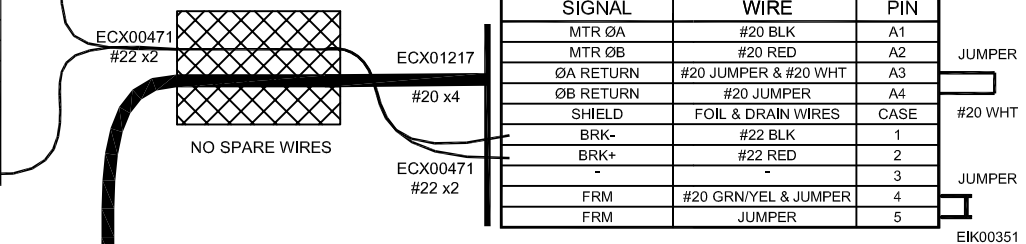
25 PIN MALE D, ECK00101
BACKSHELL, ECK00656

PIN	WIRE	SIGNAL
13	#22 BLK	BRK-
12	-	-
11	-	-
10	-	-
9	-	-
8	-	-
7	-	-
6	-	-
5	-	-
4	-	-
3	-	-
2	-	-
1	-	-
CASE	DRAIN WIRE	SIGNAL SHIELD

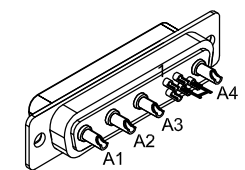
PIN	WIRE	SIGNAL
A1	#20 BLK	MTR ØA
A2	#20 RED	MTR ØB
A3	#20 WHT	MTR ØC
A5	#20 GRN/YEL	FRAME
CASE	SHIELD	SHIELD



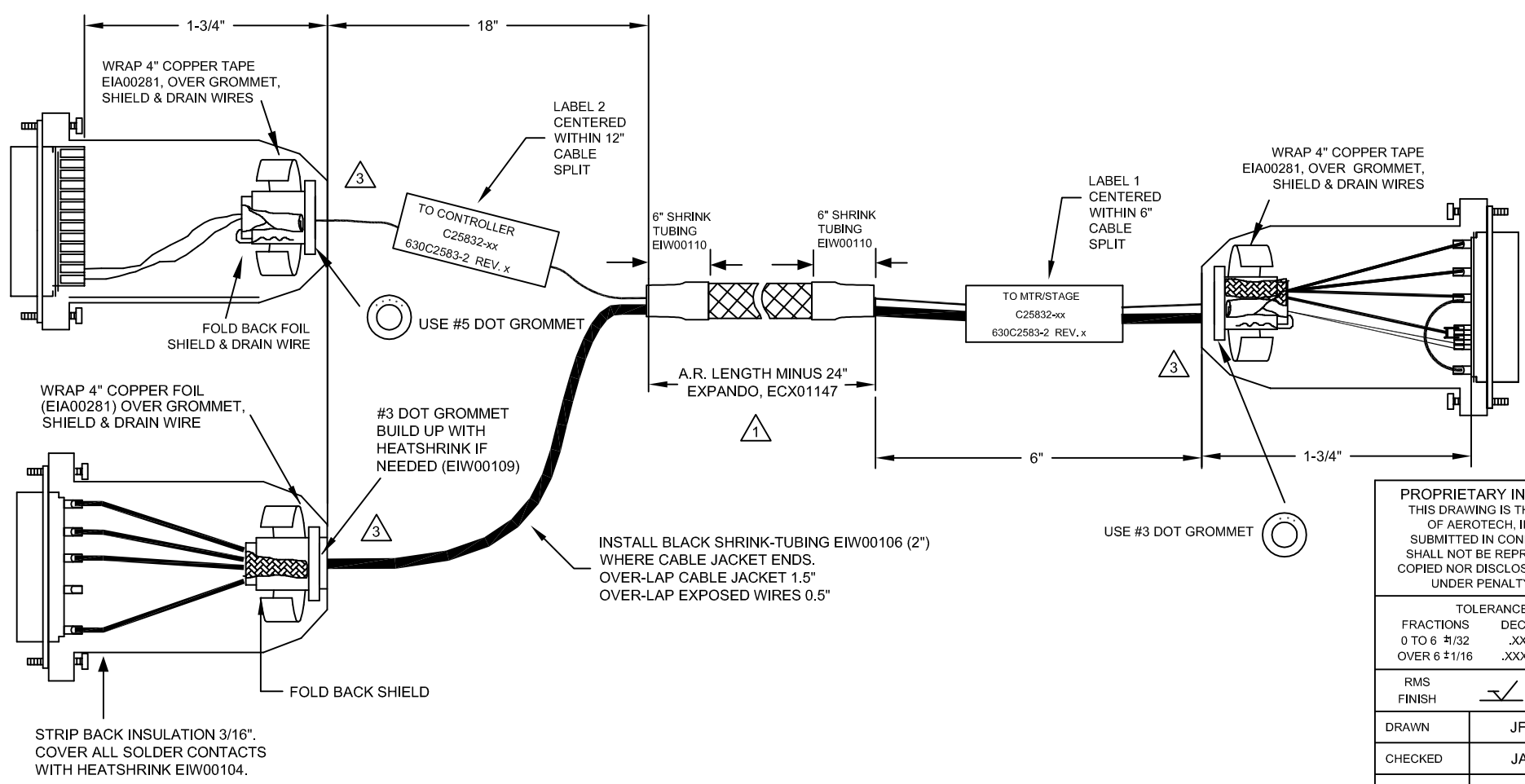
5 PIN MALE HPD, ECK01236
BACKSHELL, ECK00656



SIGNAL	WIRE	PIN
MTR ØA	#20 BLK	A1
MTR ØB	#20 RED	A2
ØA RETURN	#20 JUMPER & #20 WHT	A3
ØB RETURN	#20 JUMPER	A4
SHIELD	FOIL & DRAIN WIRES	CASE
BRK-	#22 BLK	1
BRK+	#22 RED	2
-	-	3
FRM	#20 GRN/YEL & JUMPER	4
FRM	JUMPER	5

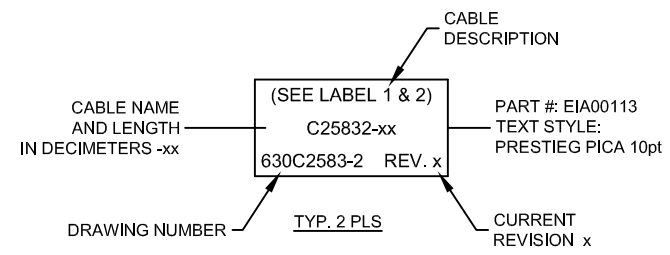


4 PIN FEMALE HPD, ECK00657
SOCKET CONTACT X4, ECK00659
BACK SHELL, ECK00656



3 VERIFY GROMMET IS SECURED TIGHTLY AROUND CABLE. IF NECESSARY BUILD UP WITH SHRINK TUBING.

1 STARTING CABLE LENGTH SHOULD BE 8" IN LONGER THAN TOTAL LENGTH OF CABLE. LENGTH OF CABLE IS DESIGNATED BY THE xx IN CABLE NAME.



PROPRIETARY INFORMATION
THIS DRAWING IS THE PROPERTY OF AEROTECH, INC. AND IS SUBMITTED IN CONFIDENCE AND SHALL NOT BE REPRODUCED NOR COPIED NOR DISCLOSED TO OTHERS UNDER PENALTY OF LAW.

TOLERANCES ON		
FRACTIONS	DECIMALS	ANGLES
0 TO 6 ±1/32	.XX ±01	± 0-30°
OVER 6 ±1/16	.XXX ±005	

RMS FINISH	✓	EXCEPT AS NOTED
------------	---	-----------------

DRAWN	JFM	10/20/16
CHECKED	JAB	10/20/16
APPD.	JFM	10/20/16

AEROTECH © AEROTECH, INC. 101 Zeta Drive
Pittsburgh, PA. 15238
www.aerotech.com

C25832-xx
SM MTR-5D 25D-4D-3.5ARMS-MAX450DM

PART CODE	SIZE	REV.
C25832	C	A

SCALE	NTS	FILE NAME	630C2583-2.Dwg	SHEET	1 OF 1
-------	-----	-----------	----------------	-------	--------