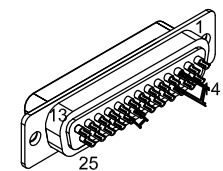


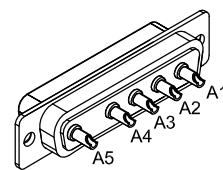
| REVISIONS | | | |
|-----------|--------------|-----------|-------|
| REV. | DESCRIPTION | DATE | DRAWN |
| A | ADDED ECO 69 | 8/29/2017 | JFM |



25 PIN MALE D, ECK00101
BACKSHELL, ECK00656

| PIN | WIRE | SIGNAL |
|------|-------------------|---------------|
| 13 | #22 BLK | BRK- |
| 12 | #24 WHT | CW/+ LMT |
| 11 | - | - |
| 10 | - | - |
| 9 | - | - |
| 8 | - | - |
| 7 | - | - |
| 6 | - | - |
| 5 | - | - |
| 4 | #24 PNK | ID |
| 3 | JUMPER | ENC +5V |
| 2 | - | - |
| 1 | - | - |
| CASE | FOIL & DRAIN WIRE | SIGNAL SHIELD |

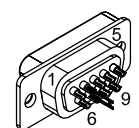
| PIN | WIRE | SIGNAL |
|------|------------------|-----------|
| 14 | - | - |
| 15 | - | - |
| 16 | JUMPER & #24 VIO | LMT +5V |
| 17 | - | - |
| 18 | - | - |
| 19 | - | - |
| 20 | JUMPER & #24 GRN | LMT COM |
| 21 | JUMPER | ENC COM |
| 22 | - | - |
| 23 | - | - |
| 24 | #24 GRY | CCW/- LMT |
| 25 | #22 RED | BRK+ |
| CASE | SHIELD | SHIELD |



5 PIN MALE HPD, ECK01236
BACKSHELL, ECK00656

| SIGNAL | WIRE | PIN |
|---------|-------------------|------|
| +5 | #24 VIO | 1 |
| COM | JUMPER, #24 GRN | 2 |
| CW / + | #24 WHT | 3 |
| - | - | 4 |
| CCW / - | #24 GRY | 5 |
| - | - | 6 |
| COM | JUMPER | 7 |
| ID | #24 PNK | 8 |
| - | - | 9 |
| SHIELD | FOIL & DRAIN WIRE | CASE |

EIK00351
JUMPER



9 PIN FEMALE D, ECK00340
BACKSHELL, ECK01021

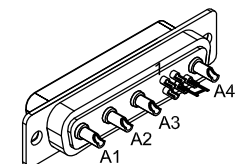
| SIGNAL | WIRE | PIN |
|-----------|----------------------|------|
| MTR ØA | #20 BLK | A1 |
| MTR ØB | #20 RED | A2 |
| ØA RETURN | #20 JUMPER & #20 WHT | A3 |
| ØB RETURN | #20 JUMPER | A4 |
| SHIELD | FOIL & DRAIN WIRES | CASE |
| BRK- | #22 BLK | 1 |
| BRK+ | #22 RED | 2 |
| - | - | 3 |
| FRM | #20 GRN/YEL & JUMPER | 4 |
| FRM | JUMPER | 5 |

JUMPER

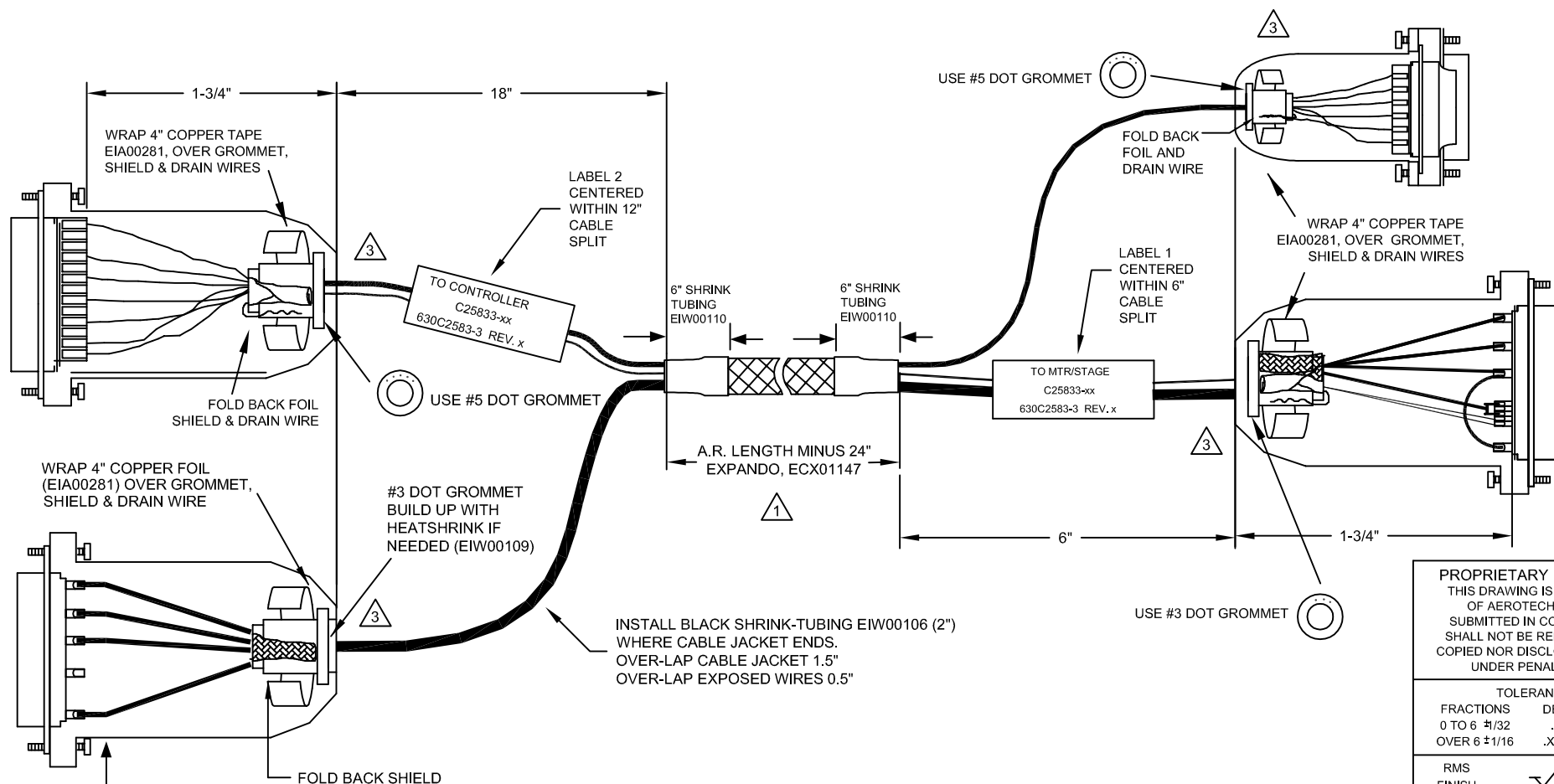
#20 WHT

JUMPER

EIK00351



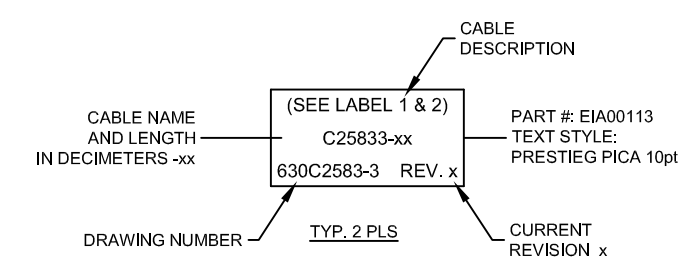
4 PIN FEMALE HPD, ECK00657
SOCKET CONTACT X4, ECK00659
BACK SHELL, ECK00656



VERIFY GROMMET IS SECURED TIGHTLY AROUND CABLE. IF NECESSARY BUILD UP WITH SHRINK TUBING.



STARTING CABLE LENGTH SHOULD BE 8" IN LONGER THAN TOTAL LENGTH OF CABLE. LENGTH OF CABLE IS DESIGNATED BY THE xx IN CABLE NAME.



PROPRIETARY INFORMATION
THIS DRAWING IS THE PROPERTY OF AEROTECH, INC. AND IS SUBMITTED IN CONFIDENCE AND SHALL NOT BE REPRODUCED NOR COPIED NOR DISCLOSED TO OTHERS UNDER PENALTY OF LAW.



© AEROTECH, INC. 101 Zeta Drive
Pittsburgh, PA. 15238
www.aerotech.com

| TOLERANCES ON | | |
|---------------|-----------|---------|
| FRACTIONS | DECIMALS | ANGLES |
| 0 TO 6 1/32 | .XX ±01 | ± 0-30° |
| OVER 6 1/16 | .XXX ±005 | |

C25833-xx
SM MTR-5D 25D-4D-9D-3.5ARMS-MAX147DM

| RMS FINISH | EXCEPT AS NOTED |
|-------------------------------------|-----------------|
| <input checked="" type="checkbox"/> | |

| PART CODE | SIZE | REV. |
|-----------|------|------|
| C25833 | C | A |

STRIP BACK INSULATION 3/16". COVER ALL SOLDER CONTACTS WITH HEATSHRINK EIW00104.