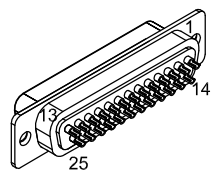


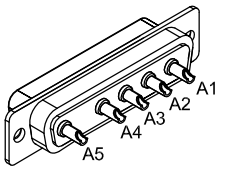
REVISIONS			
REV.	DESCRIPTION	DATE	DRAWN
A	ADDED ECO 69	8/29/2017	JFM



25 PIN MALE D, ECK00101  
BACKSHELL, ECK00656

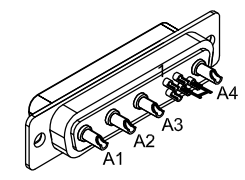
PIN	WIRE	SIGNAL
13	#22 BLK	BRK-
12	-	-
11	-	-
10	-	-
9	-	-
8	-	-
7	-	-
6	-	-
5	-	-
4	-	-
3	-	-
2	-	-
1	-	-
CASE	DRAIN WIRE	SIGNAL SHIELD

PIN	WIRE	SIGNAL
A1	#16 BLK	MTR ØA
A2	#16 RED	MTR ØB
A3	#16 WHT	MTR ØC
A5	#16 GRN/YEL	FRAME
CASE	SHIELD	SHIELD

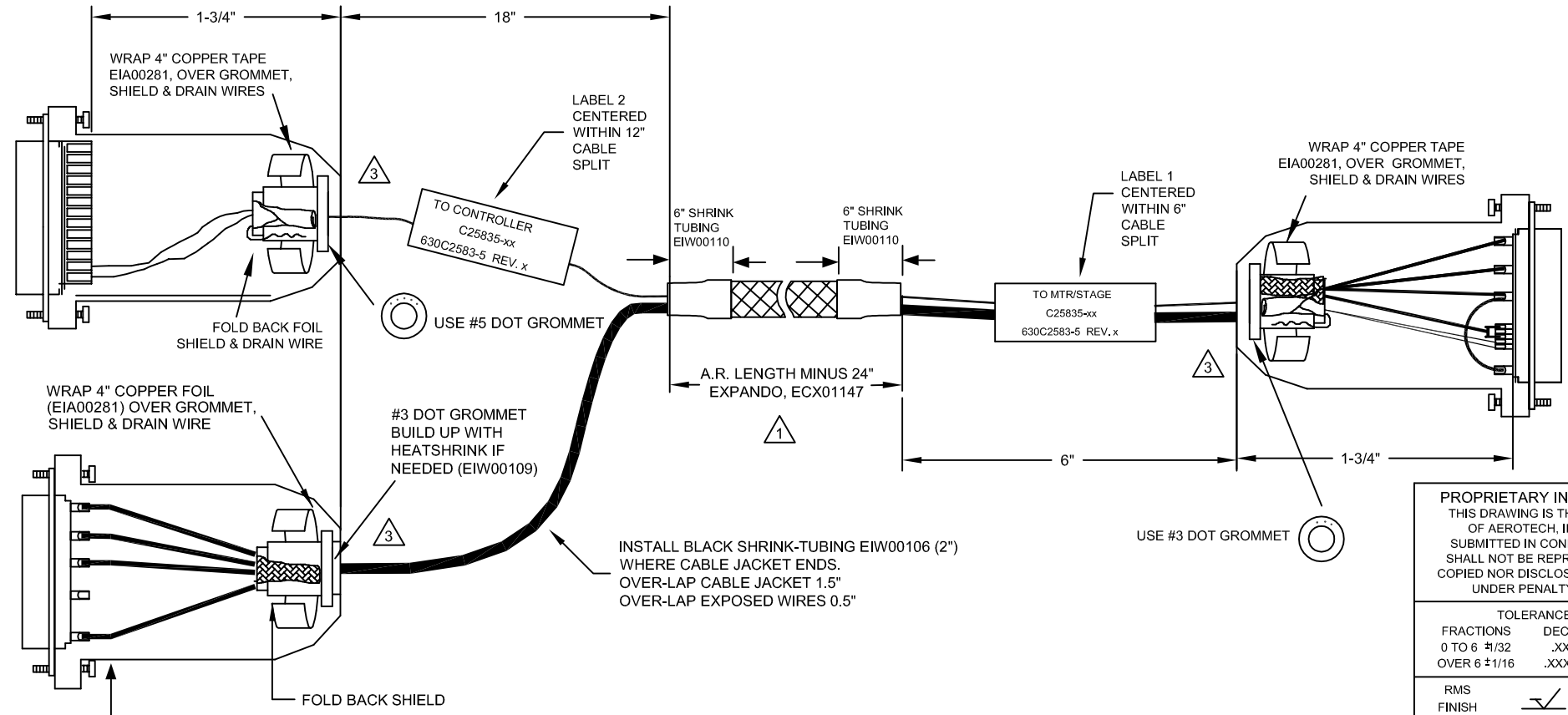


5 PIN MALE HPD, ECK01236  
BACKSHELL, ECK00656

SIGNAL	WIRE	PIN
MTR ØA	#16 BLK	A1
MTR ØB	#16 RED	A2
ØA RETURN	#16 JUMPER & #16 WHT	A3
ØB RETURN	#16 JUMPER	A4
SHIELD	FOIL & DRAIN WIRES	CASE
BRK-	#22 BLK	1
BRK+	#22 RED	2
-	-	3
FRM	#16 GRN/YEL & JUMPER	4
FRM	JUMPER	5

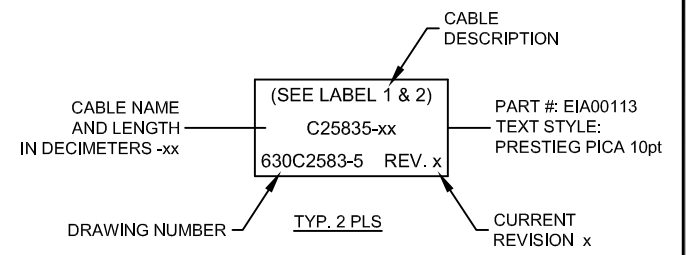


4 PIN FEMALE HPD, ECK00657  
SOCKET CONTACT X4, ECK00659  
BACK SHELL, ECK00656



3 VERIFY GROMMET IS SECURED TIGHTLY AROUND CABLE. IF NECESSARY BUILD UP WITH SHRINK TUBING.

1 STARTING CABLE LENGTH SHOULD BE 8" IN LONGER THAN TOTAL LENGTH OF CABLE. LENGTH OF CABLE IS DESIGNATED BY THE xx IN CABLE NAME.



PROPRIETARY INFORMATION  
THIS DRAWING IS THE PROPERTY OF AEROTECH, INC. AND IS SUBMITTED IN CONFIDENCE AND SHALL NOT BE REPRODUCED NOR COPIED NOR DISCLOSED TO OTHERS UNDER PENALTY OF LAW.

AEROTECH  
© AEROTECH, INC. 101 Zeta Drive  
Pittsburgh, PA. 15238  
www.aerotech.com

TOLERANCES ON  
FRACTIONS DECIMALS ANGLES  
0 TO 6 ±1/32 .XX ±01 ± 0-30'  
OVER 6 ±1/16 .XXX ±005

RMS FINISH ✓ EXCEPT AS NOTED

DRAWN JFM 10/20/16  
CHECKED JAB 10/20/16  
APPD. JFM 10/20/16

PART CODE C25835  
SIZE C  
SCALE NTS  
FILE NAME 630C2583-5.Dwg  
SHEET 1 OF 1

REV. A

C25835-xx  
SM MTR-5D 25D-4D-7ARMS-MAX450DM

630C2583-5