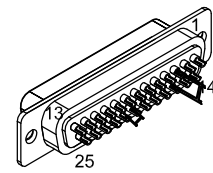


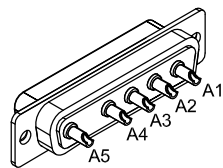
REVISIONS			
REV.	DESCRIPTION	DATE	DRAWN
A	ADDED ECO 69	8/29/2017	JFM



25 PIN MALE D, ECK00101
BACKSHELL, ECK00656

PIN	WIRE	SIGNAL
13	#22 BLK	BRK-
12	#24 WHT	CW/+ LMT
11	-	-
10	-	-
9	-	-
8	-	-
7	-	-
6	-	-
5	-	-
4	#24 PNK	ID
3	JUMPER	ENC +5V
2	-	-
1	-	-
CASE	FOIL & DRAIN WIRE	SIGNAL SHIELD

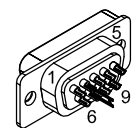
PIN	WIRE	SIGNAL
14	-	-
15	-	-
16	JUMPER & #24 VIO	LMT +5V
17	-	-
18	-	-
19	-	-
20	JUMPER & #24 GRN	LMT COM
21	JUMPER	ENC COM
22	-	-
23	-	-
24	#24 GRY	CCW/- LMT
25	#22 RED	BRK+
CASE	SHIELD	SHIELD



5 PIN MALE HPD, ECK01236
BACKSHELL, ECK00656

SIGNAL	WIRE	PIN
+5	#24 VIO	1
COM	JUMPER, #24 GRN	2
CW / +	#24 WHT	3
-	-	4
CCW / -	#24 GRY	5
-	-	6
COM	JUMPER	7
ID	#24 PNK	8
-	-	9
SHIELD	FOIL & DRAIN WIRE	CASE

EIK00351
JUMPER



9 PIN FEMALE D, ECK00340
BACKSHELL, ECK01021

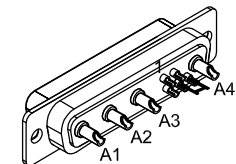
SIGNAL	WIRE	PIN
MTR ØA	#16 BLK	A1
MTR ØB	#16 RED	A2
ØA RETURN	#16 JUMPER & #16 WHT	A3
ØB RETURN	#16 JUMPER	A4
SHIELD	FOIL & DRAIN WIRES	CASE
BRK-	#22 BLK	1
BRK+	#22 RED	2
-	-	3
FRM	#16 GRN/YEL & JUMPER	4
FRM	JUMPER	5

JUMPER

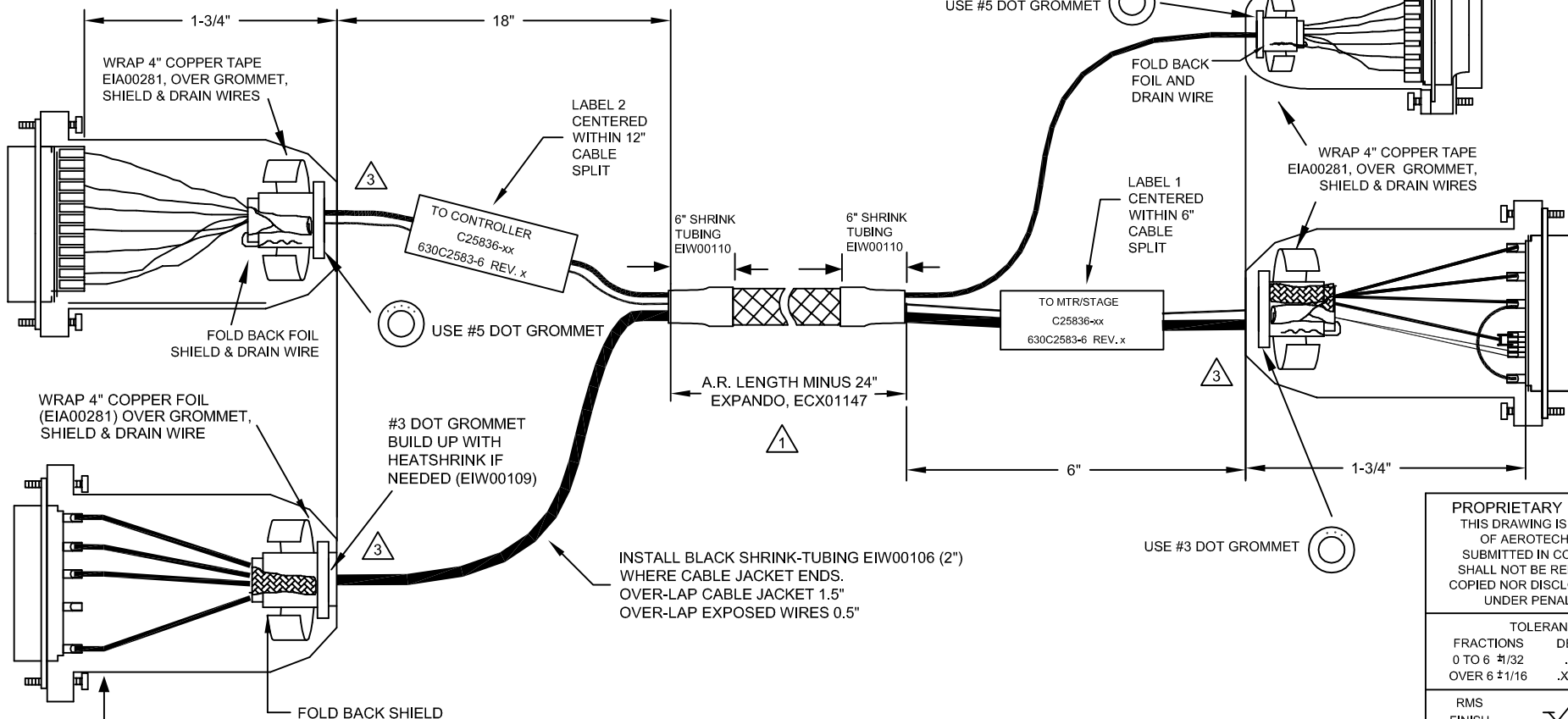
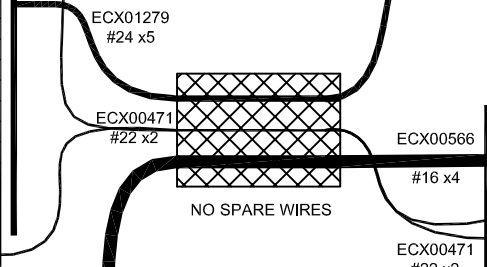
#16 WHT

JUMPER

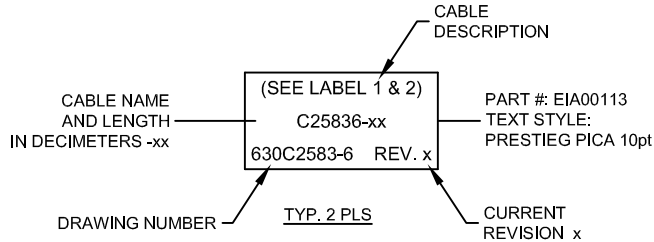
EIK00351



4 PIN FEMALE HPD, ECK00657
SOCKET CONTACT X4, ECK00659
BACK SHELL, ECK00656



- 3 VERIFY GROMMET IS SECURED TIGHTLY AROUND CABLE. IF NECESSARY BUILD UP WITH SHRINK TUBING.
- 1 STARTING CABLE LENGTH SHOULD BE 8" IN LONGER THAN TOTAL LENGTH OF CABLE. LENGTH OF CABLE IS DESIGNATED BY THE xx IN CABLE NAME.



PROPRIETARY INFORMATION
THIS DRAWING IS THE PROPERTY OF AEROTECH, INC. AND IS SUBMITTED IN CONFIDENCE AND SHALL NOT BE REPRODUCED NOR COPIED NOR DISCLOSED TO OTHERS UNDER PENALTY OF LAW.

TOLERANCES ON		
FRACTIONS	DECIMALS	ANGLES
0 TO 6 1/32	.XX ±01	± 0-30°
OVER 6 1/16	.XXX ±005	

RMS FINISH	✓	EXCEPT AS NOTED
------------	---	-----------------

DRAWN	JFM	10/20/16
CHECKED	JAB	10/20/16
APPD.	JFM	10/20/16

AEROTECH © AEROTECH, INC. 101 Zeta Drive
Pittsburgh, PA. 15238
www.aerotech.com

C25836-xx
SM MTR-5D 25D-4D-9D-7ARMS-MAX147DM

PART CODE	SIZE	REV.
C25836	C	A

630C2583-6

SCALE	NTS	FILE NAME	630C2583-6.Dwg	SHEET	1 OF 1
-------	-----	-----------	----------------	-------	--------

STRIP BACK INSULATION 3/16".
COVER ALL SOLDER CONTACTS
WITH HEATSHRINK EIW00104.