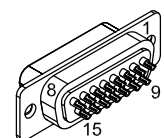


REVISIONS			DATE	APPROVAL
REV.	DESCRIPTION			



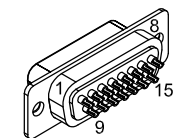
15 PIN "D" MALE, ECK00100  
BACKSHELL, ECK1022

SOCKET	WIRE	SIGNAL
13	W/RED	INTERLOCK
7	W/GRN	JOYSTICK BUTTON B
6	W/YEL	JOYSTICK POTENTIOMETER 2
	-	
4	VIO	COMMON
3	TAN	JOYSTICK POTENTIOMETER 1
2	BRN	JOYSTICK BUTTON A
1	YEL	+5V
CASE	SHIELD	SHIELD

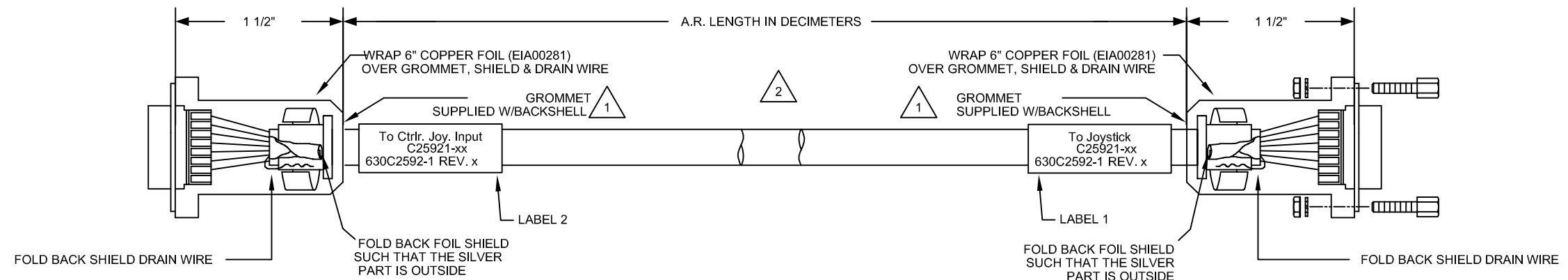
10 COND. #22 SHIELDED  
ECX00428

UNUSED WIRES:  
W/ORN, W/BRN, W/GRY

SIGNAL	WIRE	PIN
INTERLOCK	W/RED	13
JOYSTICK BUTTON B	W/GRN	7
JOYSTICK POTENTIOMETER 2	W/YEL	6
COMMON	VIO	4
JOYSTICK POTENTIOMETER 1	TAN	3
JOYSTICK BUTTON A	BRN	2
+5V	YEL	1
SHIELD	SHIELD	CASE


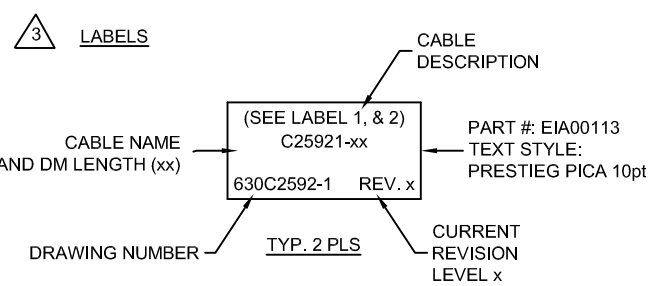



15 PIN "D" FEMALE, ECK00326  
BACKSHELL, ECK01022  
JACKSOCKET, ECK00129



△ 2 STARTING CABLE LENGTH = 1 FT LONGER THAN REQUIRED LENGTH.

△ 1 USE #4 GROMMET WITH 4 DOTS AS SHOWN WHICH IS SUPPLIED W/BACKSHELL

PROPRIETARY INFORMATION THIS DRAWING IS THE PROPERTY OF AEROTECH, INC. AND IS SUBMITTED IN CONFIDENCE AND SHALL NOT BE REPRODUCED NOR COPIED NOR DISCLOSED TO OTHERS UNDER PENALTY OF LAW.			 AEROTECH, INC. 101 Zeta Drive Pittsburgh, PA. 15238 (412)963-7470 TWX710-795-3125		
TOLERANCES ON FRACTIONS DECIMALS ANGLES 0 TO 6 ±1/32 .XX ±01 ± 0-30' OVER 6 ±1/16 .XXX ±005			<b>C25921</b> <b>JSXT 15D-15DJS-MAX300DM</b>		
RMS FINISH	EXCEPT AS NOTED		PART CODE	SIZE	REV.
			<b>C25921</b>	<b>C</b>	<b>630C2592-1</b>
DRAWN	JFM	3/31/2017	SCALE	N/A	FILE NAME
CHECKED	JAB	3/31/2017			630C2592-1.Dwg
APPD.	JFM	3/31/2017	SHEET	1 OF 1	