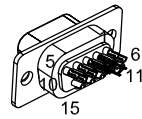


REVISIONS			DATE	APPROVAL
REV.	DESCRIPTION			

GOLD JUMPERS,
EIK00351
PIN 2-3, AND PIN 7-8



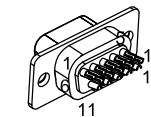
15 PIN HD MALE, ECK01287
BACKSHELL, ECK01021

SOCKET	WIRE	SIGNAL
CASE	SHIELD	SHIELD
1	W/ORN	ANALOG INPUT 0+
2	JUMPER	ANALOG INPUT 0-
3	JUMPER	COMMON
4	-	-
5	W/GRN	COMMON
6	W/GRY	ANALOG INPUT 1+
7	JUMPER	ANALOG INPUT 1-
8	JUMPER	COMMON
11	VIO	+5V
13	W/BRN	JOYSTICK BUTTON A
14	YEL	JOYSTICK BUTTON B
15	W/RED	INTERLOCK

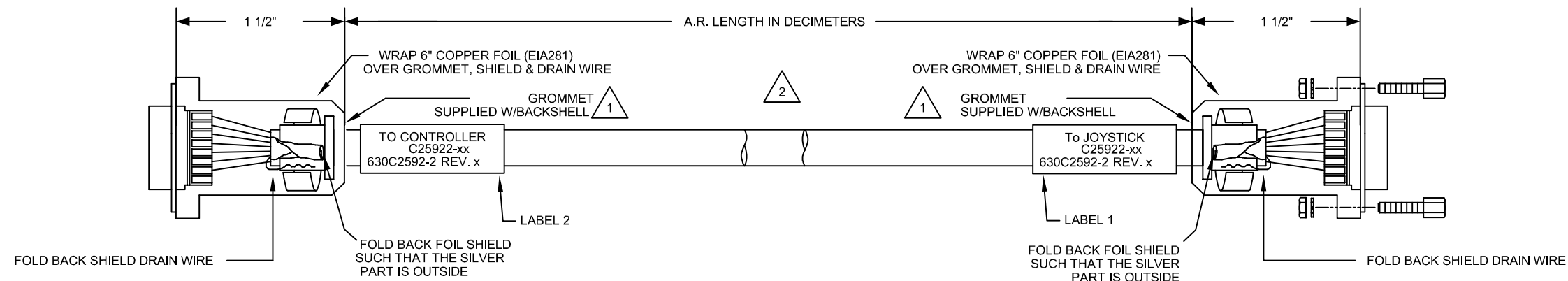
10 COND. #22 SHIELDED
ECX00428

UNUSED WIRES:
TAN, BRN, W/YEL

SIGNAL	WIRE	PIN
SHIELD	SHIELD	CASE
JOYSTICK X	W/ORN	1
-	-	2
-	-	3
-	-	4
COMMON	W/GRN	5
JOYSTICK Y	W/GRY	6
-	-	7
-	-	8
+5V	VIO	11
JOYSTICK BUTTON A	W/BRN	13
JOYSTICK BUTTON B	YEL	14
INTERLOCK	W/RED	15



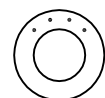
15 PIN HD FEMALE, ECK01206
BACKSHELL, ECK1021
JACKSOCKET, ECK00129



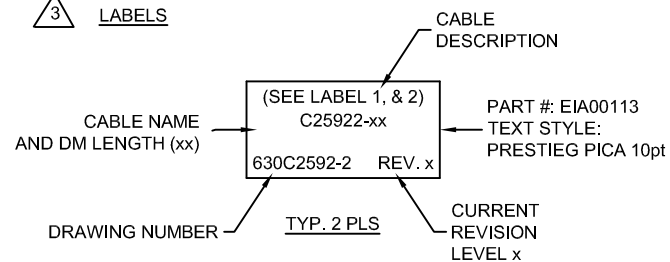
STARTING CABLE LENGTH = 1 FT LONGER THAN REQUIRED LENGTH.



USE #4 DOT GROMMET AS SHOWN WHICH IS SUPPLIED W/BACKSHELL



LABELS



PROPRIETARY INFORMATION THIS DRAWING IS THE PROPERTY OF AEROTECH, INC. AND IS SUBMITTED IN CONFIDENCE AND SHALL NOT BE REPRODUCED NOR COPIED NOR DISCLOSED TO OTHERS UNDER PENALTY OF LAW.			AEROTECH, INC. 101 Zeta Drive Pittsburgh, PA. 15238 (412)963-7470 TWX710-795-3125		
TOLERANCES ON FRACTIONS DECIMALS ANGLES 0 TO 6 ±1/32 .XX ±01 ± 0-30' OVER 6 ±1/16 .XXX ±005			C25922 JSHXT 15HD-15HDJS-MAX300DM		
RMS FINISH <input checked="" type="checkbox"/> EXCEPT AS NOTED			PART CODE C25922		SIZE C
DRAWN JFM 9/28/2017	CHECKED JAB 9/28/2017	APPD. JFM 9/28/2017	SCALE N/A	FILE NAME 630C2592-2.Dwg	SHEET 1 OF 1
DRAWING NUMBER 630C2592-2			CURRENT REVISION LEVEL REV. x		REV. -