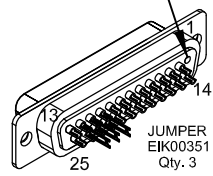


REVISIONS			
REV.	DESCRIPTION	DATE	DRAWN

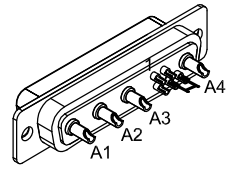
PIN	WIRE	SIGNAL
13	-	-
12	#20 RED	MTR ØB
11	#20 BLK	MTR ØA
10	#20 WHT	RETURN
9	-	-
8	-	-
7	-	-
6	-	-
5	-	-
4	-	-
3	-	-
2	-	-
1	REMOVE PIN	KEY
CASE	BRAID/FOIL & DRAIN #20 GRN/YEL	SHIELDS FRAME
14	-	-
15	-	-
16	-	-
17	-	-
18	-	-
19	-	-
20	-	-
21	-	-
22	JUMPER	RETURN
23	JUMPER	MTR ØA
24	JUMPER	MTR ØB
25	-	-

SIGNAL	WIRE	PIN
MTR ØA	#20 BLK	A1
MTR ØB	#20 RED	A2
ØA RETURN	#20 JUMPER & #20 WHT	A3
ØB RETURN	#20 JUMPER	A4
SHIELD	BRAID SHIELD	CASE
-	-	1
-	-	2
-	-	3
FRM	#20 GRN/YEL & JUMPER	4
FRM	JUMPER	5

HEAT PIN 1 AND REMOVE TO KEY CONNECTOR

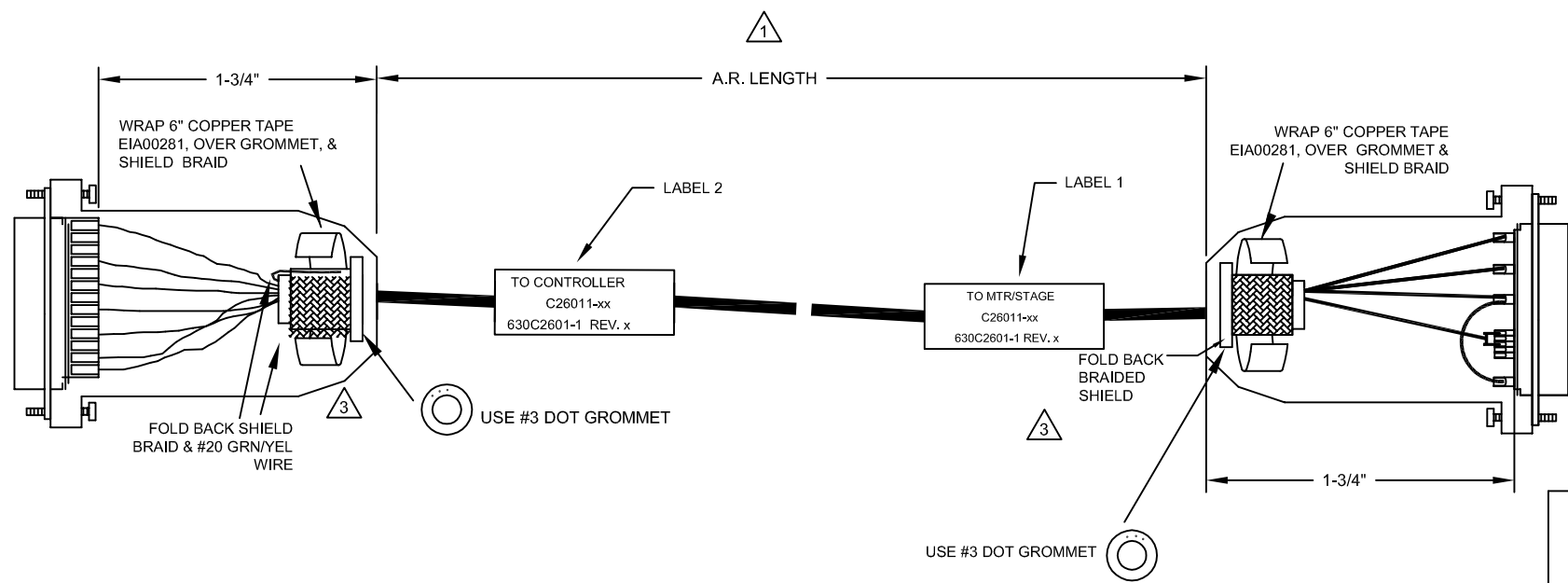


25 PIN MALE D, ECK00101
BACKSHELL, ECK00656

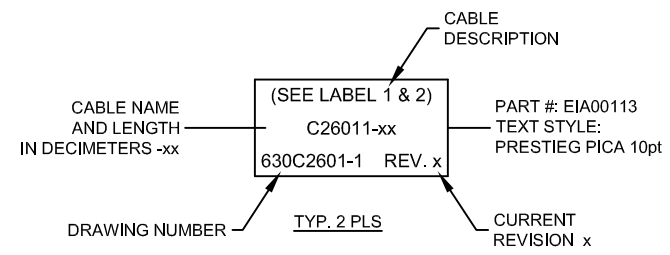


4 PIN FEMALE HPD, ECK00657
SOCKET CONTACT X4, ECK00659
BACK SHELL, ECK00656

ECX01217
#20 x4



- 3 VERIFY GROMMET IS SECURED TIGHTLY AROUND CABLE. IF NECESSARY BUILD UP WITH SHRINK TUBING.
- 2 INSULATE ALL SOLDER CUP CONNECTIONS WITH HEATSHRINK, FOR #24 WIRES EIW00100, #22 EIW00101
- 1 STARTING CABLE LENGTH SHOULD BE 4" IN LONGER THAN TOTAL LENGTH OF CABLE. LENGTH OF CABLE IS DESIGNATED BY THE xx IN CABLE NAME.



PROPRIETARY INFORMATION
THIS DRAWING IS THE PROPERTY OF AEROTECH, INC. AND IS SUBMITTED IN CONFIDENCE AND SHALL NOT BE REPRODUCED NOR COPIED NOR DISCLOSED TO OTHERS UNDER PENALTY OF LAW.

AEROTECH © AEROTECH, INC. 101 Zeta Drive
Pittsburgh, PA. 15238
www.aerotech.com

C26011-xx (Lab to HPD SM)
SM MTR-25D-4D-3.5ARMS-MAX450DM

TOLERANCES ON FRACTIONS 0 TO 6 ±1/32	DECIMALS .XX ±01	ANGLES ± 0-30°	PART CODE C26011	SIZE C	REV. -
OVER 6 ±1/16	.XXX ±005		SCALE NTS	FILE NAME 630C2601-1.Dwg	SHEET 1 OF 1

RMS FINISH EXCEPT AS NOTED

DRAWN JFM 10/17/17
CHECKED JAB 10/17/17
APPD. JFM 10/17/17