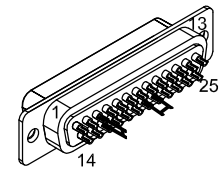


REVISIONS			
REV.	DESCRIPTION	DATE	DRAWN

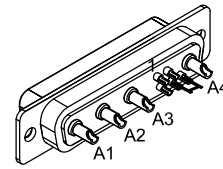
PIN	WIRE	SIGNAL
13	-	-
12	#20 RED	MTR ØB
11	#20 BLK	MTR ØA
10	#20 WHT	RETURN
9	-	-
8	-	-
7	#24 GRN	CCW/- LMT
6	JUMPER & #24 GRN	LMT COM
5	JUMPER	ENC COM
4	-	-
3	-	-
2	-	-
1	REMOVE PIN	KEY
CASE	BRAID/FOIL & DRAIN	SHIELDS
	#20 GRN/YEL	FRAME
14	-	-
15	-	-
16	-	-
17	#24 VIO	+5V
18	#24 PNK	ID
19	#24 WHT	CW/+ LMT
20	-	-
21	-	-
22	JUMPER	RETURN
23	JUMPER	MTR ØA
24	JUMPER	MTR ØB
25	-	-

SIGNAL	WIRE	PIN
-	-	13
CW/+ LMT	#24 WHT	12
-	-	11
-	-	10
-	-	9
-	-	8
-	-	7
-	-	6
-	-	5
ID	#24 PNK	4
ENC +5V	JUMPER	3
-	-	2
-	-	1
SIGNAL SHIELD	FOIL & DRAIN WIRE	CASE
-	-	14
-	-	15
LMT +5V	JUMPER & #24 VIO	16
-	-	17
-	-	18
-	-	19
LMT COM	JUMPER & #24 GRN	20
ENC COM	JUMPER	21
-	-	22
-	-	23
CCW/- LMT	#24 GRN	24
-	-	25

SIGNAL	WIRE	PIN
MTR ØA	#20 BLK	A1
MTR ØB	#20 RED	A2
ØA RETURN	#20 JUMPER & #20 WHT	A3
ØB RETURN	#20 JUMPER	A4
SHIELD	BRAID SHIELD	CASE
-	-	1
-	-	2
-	-	3
FRM	#20 GRN/YEL & JUMPER	4
FRM	JUMPER	5

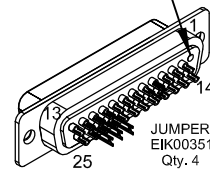


25 PIN FEMALE D-STYLE, ECK00300
BACKSHELL, ECK00656



4 PIN FEMALE HPD, ECK00657
SOCKET CONTACT X4, ECK00659
BACK SHELL, ECK00656

HEAT PIN 1 AND REMOVE TO KEY CONNECTOR



25 PIN MALE D, ECK00101
BACKSHELL, ECK00656

ECX01279 #24 x5

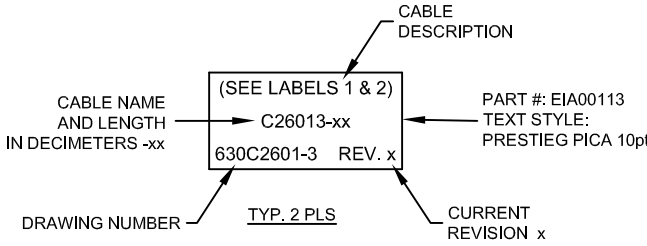
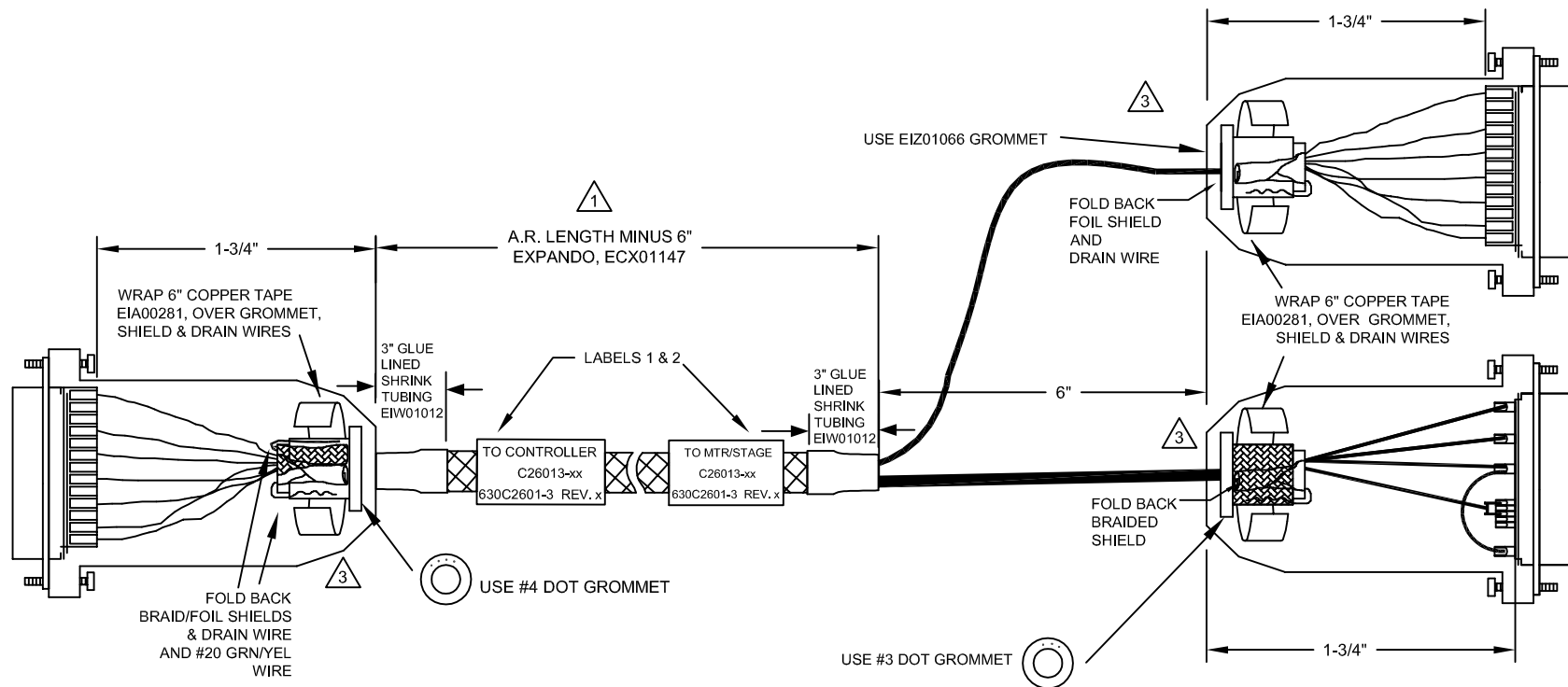
ECX01217 #20 x4

ECX01217 #20 x4



NO SPARE WIRES

- 3 VERIFY GROMMET IS SECURED TIGHTLY AROUND CABLE. IF NECESSARY BUILD UP WITH SHRINK TUBING.
- 2 INSULATE ALL SOLDER CUP CONNECTIONS WITH HEATSHRINK, FOR #24 WIRES EIW00100, #22 EIW00101
- 1 STARTING CABLE LENGTH SHOULD BE 4" IN LONGER THAN TOTAL LENGTH OF CABLE. LENGTH OF CABLE IS DESIGNATED BY THE xx IN CABLE NAME.



PROPRIETARY INFORMATION
THIS DRAWING IS THE PROPERTY OF AEROTECH, INC. AND IS SUBMITTED IN CONFIDENCE AND SHALL NOT BE REPRODUCED NOR COPIED NOR DISCLOSED TO OTHERS UNDER PENALTY OF LAW.

TOLERANCES ON		
FRACTIONS	DECIMALS	ANGLES
0 TO 6 ±1/32	.XX ±01	± 0-30°
OVER 6 ±1/16	.XXX ±005	

RMS FINISH	✓	EXCEPT AS NOTED
------------	---	-----------------

DRAWN	JFM	10/17/17
CHECKED	JAB	10/17/17
APPD.	JFM	10/17/17

AEROTECH © AEROTECH, INC. 101 Zeta Drive
Pittsburgh, PA. 15238
www.aerotech.com

C26013-xx (Lab to HPD SM)
SM MTR-25D-25D 4D-3.5ARMS-MAX147DM

PART CODE	SIZE	REV.
C26013	C	-

SCALE	NTS	FILE NAME	SHEET
		630C2601-3.Dwg	1 OF 1