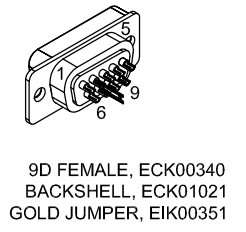
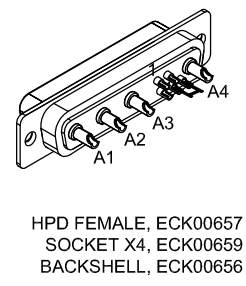
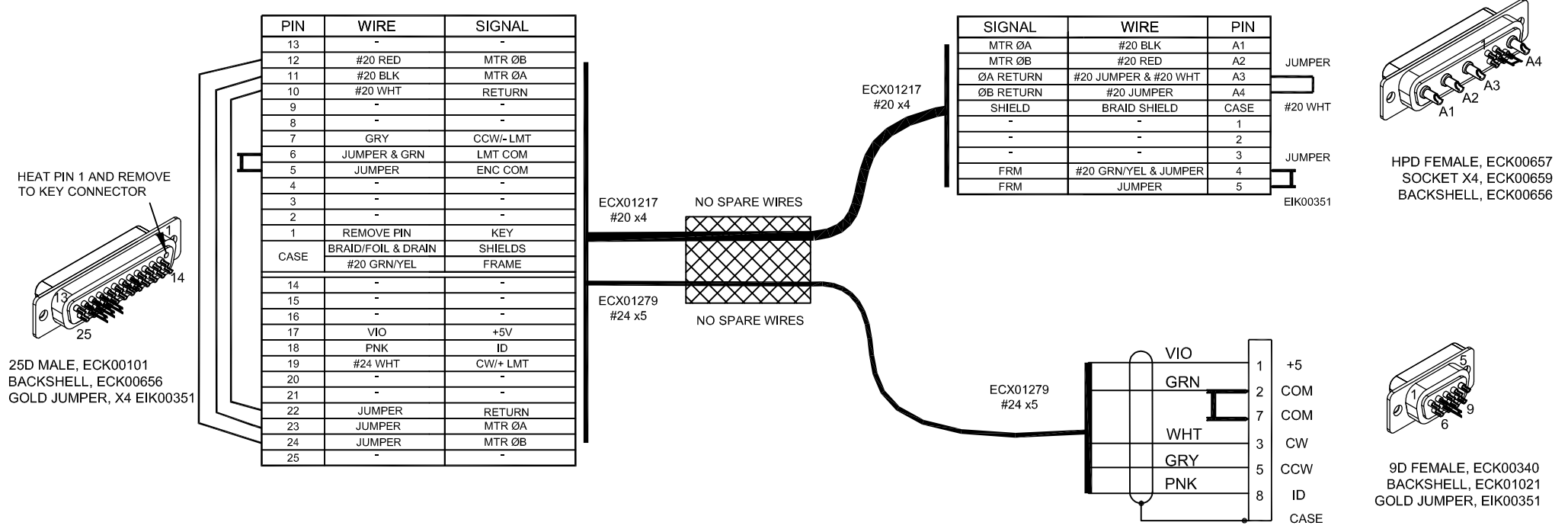
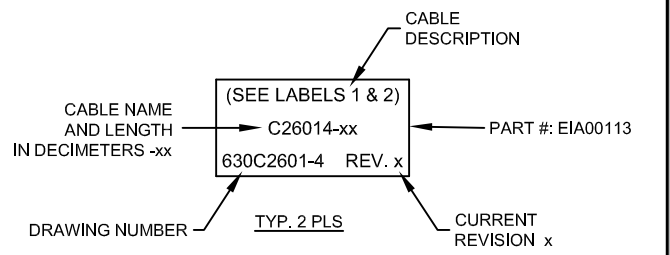
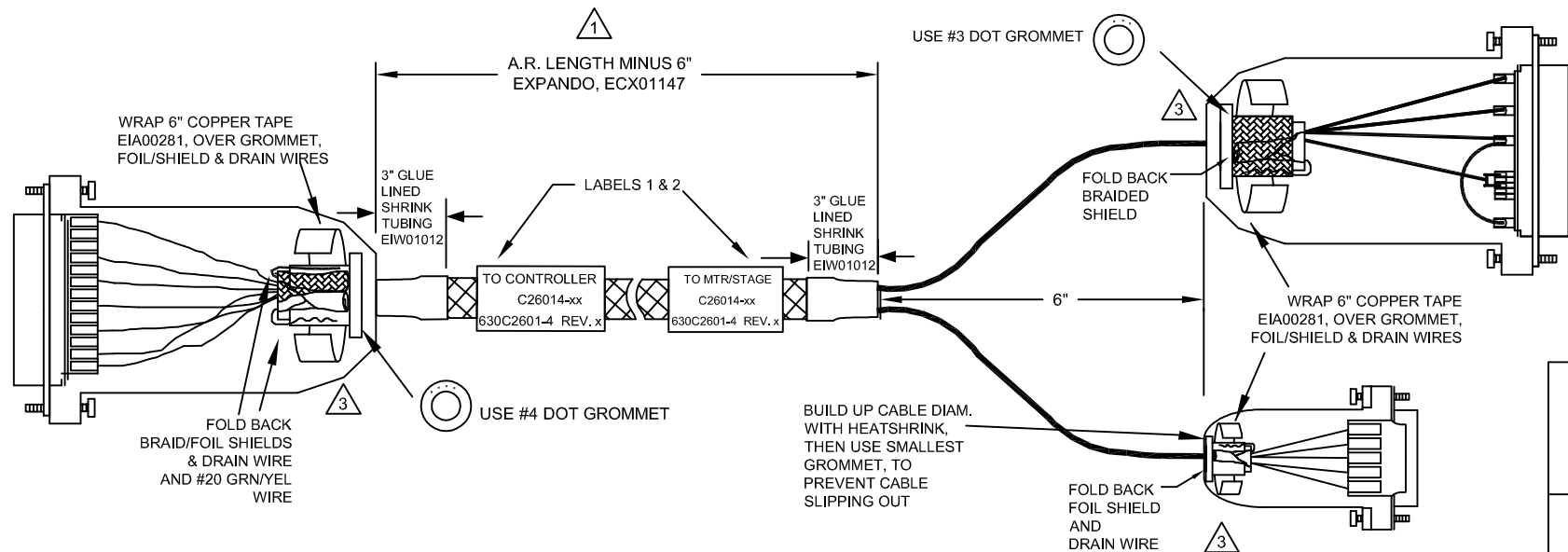


REVISIONS			
REV.	DESCRIPTION	DATE	DRAWN



- 3 VERIFY GROMMET IS SECURED TIGHTLY AROUND CABLE. IF NECESSARY BUILD UP WITH SHRINK TUBING.
- 2 INSULATE ALL SOLDER CUP CONNECTIONS WITH HEATSHRINK, FOR #24 WIRES EIW00100, #22 EIW00101
- 1 STARTING CABLE LENGTH SHOULD BE 4" IN LONGER THAN TOTAL LENGTH OF CABLE. LENGTH OF CABLE IS DESIGNATED BY THE -xx IN CABLE NAME.



PROPRIETARY INFORMATION
THIS DRAWING IS THE PROPERTY OF AEROTECH, INC. AND IS SUBMITTED IN CONFIDENCE AND SHALL NOT BE REPRODUCED NOR COPIED NOR DISCLOSED TO OTHERS UNDER PENALTY OF LAW.

AEROTECH
© AEROTECH, INC. 101 Zeta Drive
Pittsburgh, PA. 15238
www.aerotech.com

TOLERANCES ON
FRACTIONS DECIMALS ANGLES
0 TO 6 ±1/32 .XX ±01 ± 0-30'
OVER 6 ±1/16 .XXX ±005

RMS FINISH ✓ EXCEPT AS NOTED

C26014-xx (Lab to HPD SM)
SM MTR-25D-9D 4D-3.5ARMS-MAX147DM

DRAWN	JFM	12/29/17	PART CODE	SIZE	REV.
CHECKED	JAB	12/29/17	C26014	C	630C2601-4
APPD.	JFM	12/29/17	SCALE	FILE NAME	SHEET
			NTS	630C2601-4.Dwg	1 OF 1