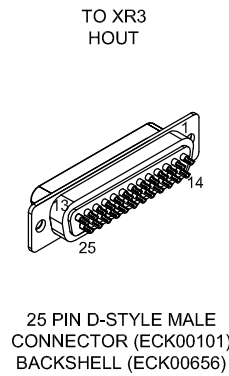
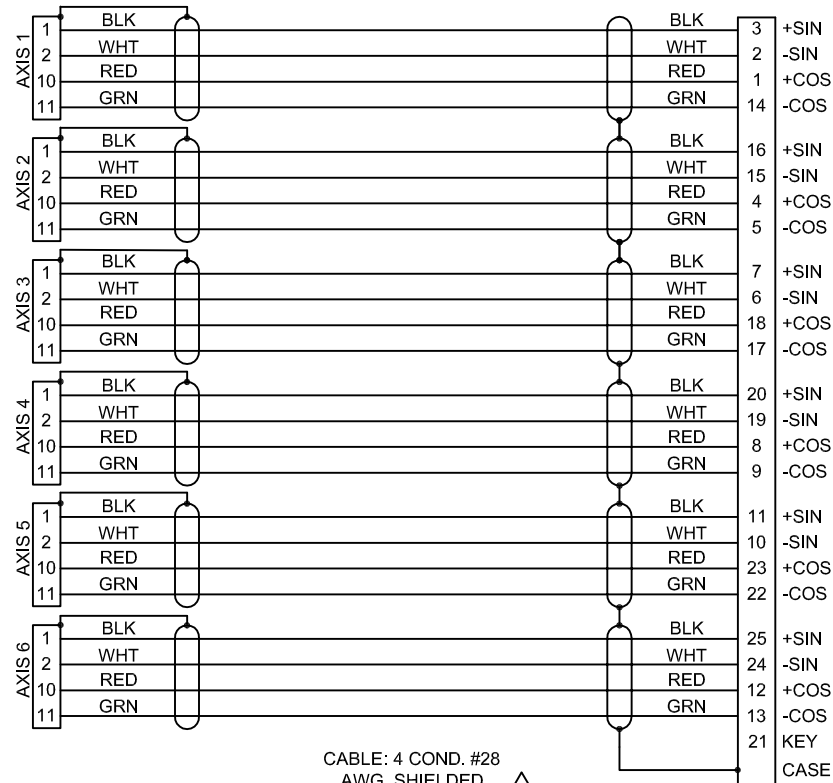
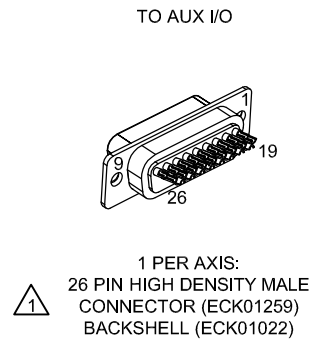


REV.		DESCRIPTION		REVISIONS		DRAWN	DATE
A		INITIAL REV.		AF			12/18



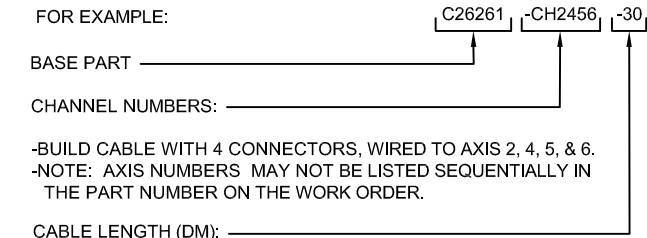
CABLE: 4 COND. #28  
AWG. SHIELDED  
(ECX01446)

NOTES:

1 CONFIGURED CABLE PROCEDURE:

BUILD CABLE PER WORK ORDER, USING ONE OR MORE LENGTHS OF CABLE (ECX01446) AND ONE OR MORE CONNECTORS (ECK01259) ACCORDING TO NUMBER OF AXIS BEING UTILIZED.

FOR EXAMPLE:



-BUILD CABLE WITH 4 CONNECTORS, WIRED TO AXIS 2, 4, 5, & 6.  
-NOTE: AXIS NUMBERS MAY NOT BE LISTED SEQUENTIALLY IN THE PART NUMBER ON THE WORK ORDER.

CAUTION - CABLE LENGTHS (XX) ARE IN DECIMETERS. THEREFORE, FOR C26261-CH5426-30, 30=30 DECIMETERS (3 METERS).

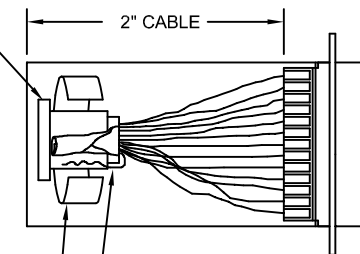
STARTING CABLE LENGTH SHOULD BE 3 1/2 INCHES LONGER THAN TOTAL LENGTH OF CABLE.

2 CONNECTOR SHIELDING:

USE GROMMET PER TABLE BELOW. IF ONLY ONE CABLE IS BEING USED, WRAP FIRST WITH 3 LAYERS OF HEATSHRINK (EIW00104)

NO. OF CABLES	USE GROMMET
1	EIZ01066
2	EIZ01066
3	5-DOT*
4	5-DOT*
5	4-DOT*
6	4-DOT*

\*AS SUPPLIED W/ BACKSHELL

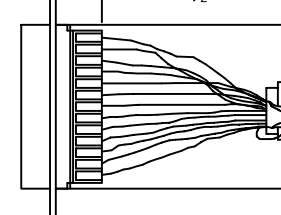


WRAP 6" COPPER FOIL (EIA00281) OVER GROMMET, SHIELD & DRAIN WIRE

FOLD BACK DRAIN WIRE AND FOIL SHIELD SUCH THAT THE SILVER SURFACE IS OUTSIDE.

3 CONNECTOR SHIELDING:

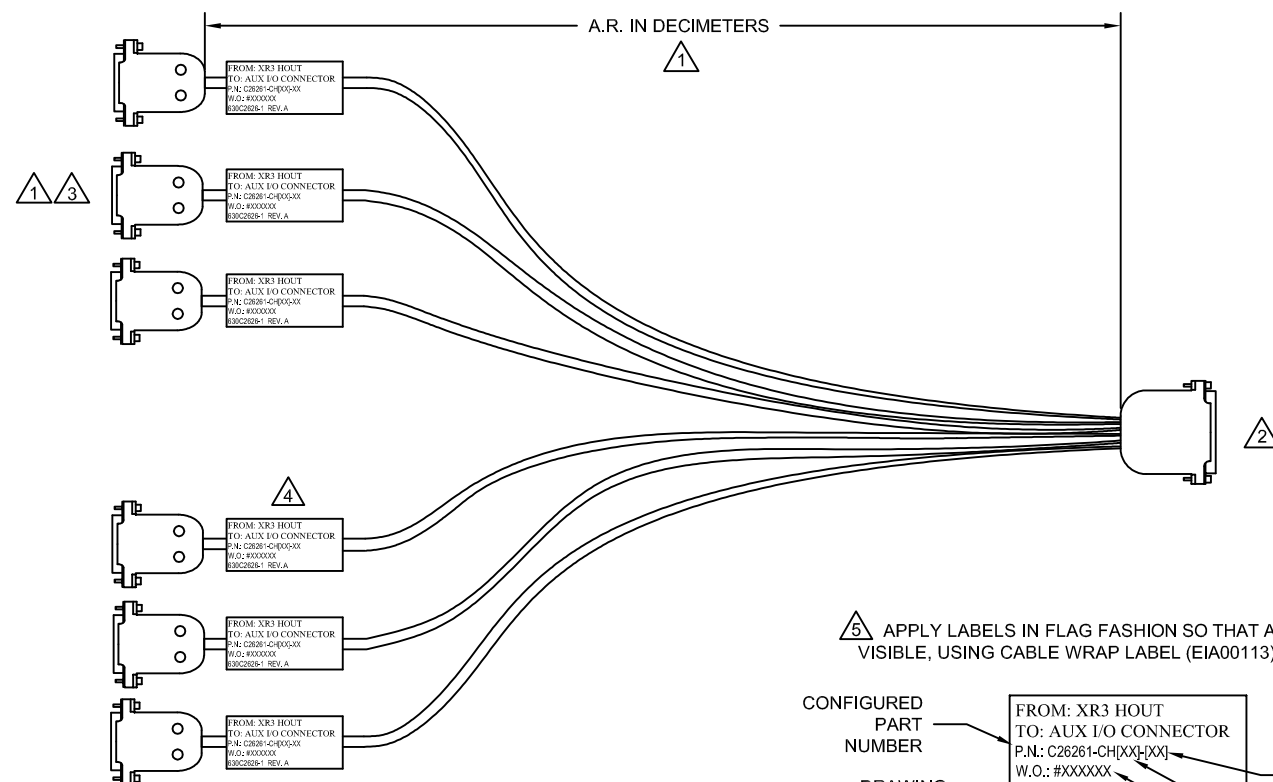
WRAP WITH HEATSHRINK (EIW00108 & EIW01010). USE 5-DOT GROMMET SUPPLIED WITH BACKSHELL.



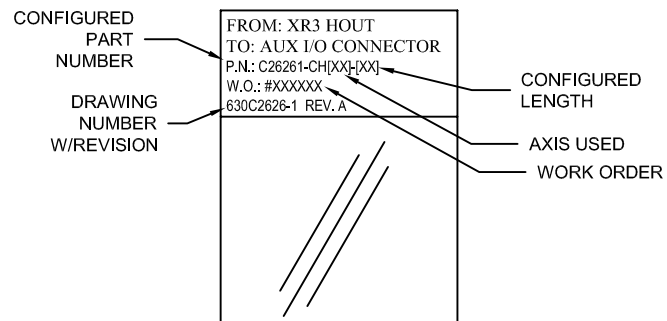
FOLD BACK DRAIN WIRE AND FOIL SHIELD SUCH THAT THE SILVER SURFACE IS OUTSIDE

WRAP 6" COPPER FOIL (EIA00281) OVER GROMMET, SHIELD & DRAIN WIRE

4.) ALL TOLERANCES ARE +/- .25".



5 APPLY LABELS IN FLAG FASHION SO THAT ALL TEXT IS VISIBLE, USING CABLE WRAP LABEL (EIA00113) (1 PER AXIS):



PROPRIETARY INFORMATION  
THIS DRAWING IS THE PROPERTY OF AEROTECH, INC. AND IS SUBMITTED IN CONFIDENCE AND SHALL NOT BE REPRODUCED NOR COPIED NOR DISCLOSED TO OTHERS UNDER PENALTY OF LAW.

AEROTECH  
AEROTECH, INC., 101 Zeta Drive  
Pittsburgh, PA. 15238-2897, USA  
HTTP://www.aerotech.com

TOLERANCES ON		
FRACTIONS	DECIMALS	ANGLES
0 TO 6 ±1/32	.XX ±01	± 0-30°
OVER 6 ±1/16	.XXX ±005	

RMS FINISH ✓ EXCEPT AS NOTED

DRAWN	AF	12/18
CHECKED	ZGK	12/18
APPD.	JFM	12/18

CABLE: CH-CFG ENC FB-25D-26HD  
26HD-CHxx-MAX120DM

PART CODE	SIZE	REV.
C26261	C	A
630C2626-1		
SCALE	FILE NAME	SHEET
NTS	630C2626-1SHT1.Dwg	1 OF 1