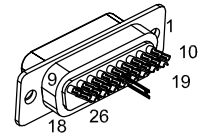


REV.		DESCRIPTION		REVISIONS		DRAWN	DATE

TO
CONTROLLER
AUX I/O INPUT

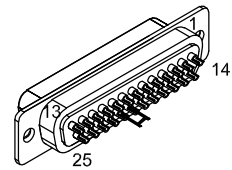


26HD MALE, ECK01259
BACKSHELL, ECK01022
GOLD JUMPER EIK00351

PIN	WIRE	SIGNAL
14	JUMPER	AIN 0-
23	BLK	A COM
13	WHT	AIN 0+
CASE	SHIELD	SHIELD

ECX01446
#28 AWG x4
UNUSED WIRE:
GRN, RED

TO
CONTROLLER
FEEDBACK



25D MALE, ECK00101
BACKSHELL, ECK0656
JUMPER 20-21 WITH EIK00351

PIN	WIRE	WIRE	SIGNAL
CASE	SHIELD	SHIELD	SHIELD
1	#22 GRN/YEL	-	AuxAnalogIn 3 / AuxSerial+
2	WHT/GRY	-	THERM
3	#22 RED	-	5 VDC
4	#24 VIO/WHT	-	ID
5	#26 VIO/RED	-	HALL B
6	W/ORN	-	MRK-
7	ORN	-	MRK+
8	PNK	-	DATA-
9	-	-	-
10	#24 GRN	-	HALL A
11	WHT/RED	-	HALL C
12	#24 VIO	-	CW EOT
13	#22 RED/ORN	-	BRAKE -
14	YEL	-	COS+
15	W/YEL	-	COS-
16	#22 BLK/ORN	-	5 VDC
17	BLU	-	SIN+
18	W/BLU	-	SIN-
19	GRY	-	DATA+
20	#22 WHT/ORN	-	LIMIT COMMON
21	#22 BLK	BLK	ENC COMMON
22	#26 GRN/RED	-	RESERVED
23	WHT/BLK	-	AuxAnalogIn 1 / AuxSerial+
24	WHT/BRN	-	CCW EOT
25	#22 WHT	-	BRAKE +

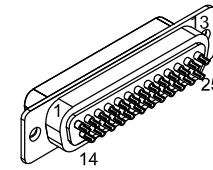
WHT
SPLICE
BRN

ECX01439
27 COND.
#28 AWG, UNLESS NOTED

INNER UNUSED WIRES:
#22 GRN/ORN, #24 GRN/WHT
OUTER UNUSED #28 WIRES:
NONE

SIGNAL	WIRE	PIN
SHIELD	SHIELD	CASE
AuxAnalogIn 3 / Serial+	#22 GRN/YEL	1
THERM	WHT/GRY	2
5 VDC	#22 RED	3
ID	#24 VIO/WHT	4
HALL B	#26 VIO/RED	5
MRK-	W/ORN	6
MRK+	ORN	7
DATA-	PNK	8
TCOMP	BRN	9
HALL A	#24 GRN	10
HALL C	WHT/RED	11
CW EOT	#24 VIO	12
BRAKE -	#22 RED/ORN	13
COS+	YEL	14
COS-	W/YEL	15
5 VDC	#22 BLK/ORN	16
SIN+	BLU	17
SIN-	W/BLU	18
DATA+	GRY	19
LIMIT COMMON	#22 WHT/ORN	20
ENC COMMON	#22 BLK	21
RESERVED	#26 GRN/RED	22
AuxAnalogIn 1 / Serial+	WHT/BLK	23
CCW EOT	WHT/BRN	24
BRAKE +	#22 WHT	25

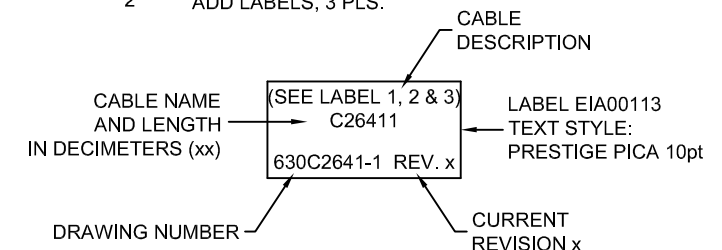
FROM
MOTOR/STAGE



25D FEMALE, ECK00300
BACKSHELL, ECK0656
JACKSOCKETS ECK00129

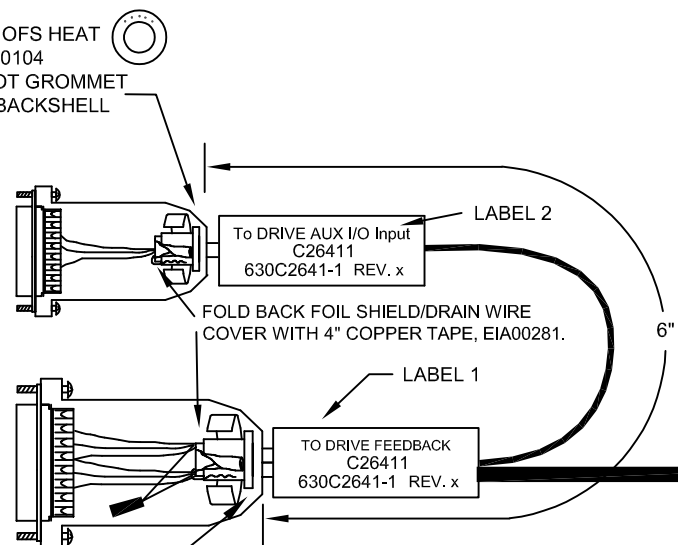
1 VERIFY GROMMET IS SECURED TIGHTLY AROUND CABLE. IF NECESSARY BUILD UP WITH SHRINK TUBING.

2 ADD LABELS, 3 PLS.



1

ADD 3 LAYER OFS HEAT SHRINK, EIW00104 AND USE 5 DOT GROMMET SUPPLIED W/BACKSHELL



1

USE 3 DOT GROMMET SUPPLIED W/BACKSHELL

FOLD BACK FOIL SHIELD/DRAIN WIRE COVER WITH 4" COPPER TAPE, EIA00281.

1

USE 2 DOT GROMMET SUPPLIED W/BACKSHELL

A.R. LENGTH

PROPRIETARY INFORMATION
THIS DRAWING IS THE PROPERTY OF AEROTECH, INC. AND IS SUBMITTED IN CONFIDENCE AND SHALL NOT BE REPRODUCED NOR COPIED NOR DISCLOSED TO OTHERS UNDER PENALTY OF LAW.



AEROTECH, INC. 101 Zeta Drive
Pittsburgh, PA. 15238
(412)963-7470
www.aerotech.com

TOLERANCES ON FRACTIONS DECIMALS ANGLES
0 TO 6 ±1/32 .XX ±.01 ± 0-30'
OVER 6 ±1/16 .XXX ±.005

RMS FINISH EXCEPT AS NOTED

DRAWN	JFM	12/29/2020
CHECKED	AGS	12/29/2020
APPD.	JFM	12/29/2020

PART CODE		SIZE	REV.
C26411		C	-
CABLE: TCOMP 25D 26HD-25D-MAX10DM			
SCALE	NTS	FILE NAME	630C2641-1.Dwg
SHEET	1 OF 1		