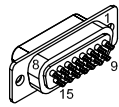


REVISIONS			
REV.	DESCRIPTION	DRAWN	DATE

TO JOYSTICK INPUT

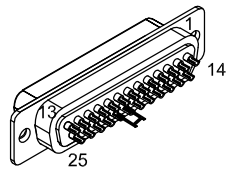


15D MALE, ECK00100  
BACKSHELL ECK01022

PIN	WIRE	SIGNAL
CASE	SHIELD	SHIELD
3	WHT	TCOMP
4	BLK	COM

ECX01446  
#28 AWG x4  
UNUSED WIRE:  
GRN, RED

TO CONTROLLER FEEDBACK



25D MALE, ECK00101  
BACKSHELL, ECK0656  
JUMPER 20-21 WITH EIK00351

PIN	WIRE	WIRE	SIGNAL
CASE	SHIELD	SHIELD	SHIELD
1	#22 GRN/YEL	-	AuxAnalogIn 3 / AuxSerial+
2	WHT/GRY	-	THERMISTOR
3	#22 RED	-	5 VDC
4	#24 VIO/WHT	-	ID
5	#26 VIO/RED	-	HALL B
6	W/ORN	-	MRK-
7	ORN	-	MRK+
8	PNK	-	DATA-
9	-	-	-
10	#24 GRN	-	HALL A
11	WHT/RED	-	HALL C
12	#24 VIO	-	CW EOT
13	#22 RED/ORN	-	BRAKE -
14	YEL	-	COS+
15	W/YEL	-	COS-
16	#22 BLK/ORN	-	5 VDC
17	BLU	-	SIN+
18	W/BLU	-	SIN-
19	GRY	-	DATA+
20	#22 WHT/ORN	-	LIMIT COMMON
21	#22 BLK	BLK	ENC COMMON
22	#26 GRN/RED	-	RESERVED
23	WHT/BLK	-	AuxAnalogIn 1 / AuxSerial+
24	WHT/BRN	-	CCW EOT
25	#22 WHT	-	BRAKE +

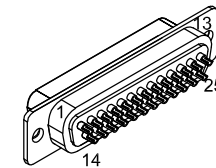
WHT  
SPLICE  
BRN

ECX01439  
27 COND.  
#28 AWG, UNLESS NOTED

INNER UNUSED WIRES:  
#22 GRN/ORN, #24 GRN/WHT  
OUTER UNUSED #28 WIRES:  
NONE

SIGNAL	WIRE	PIN
SHIELD	SHIELD	CASE
AuxAnalogIn 3 / Serial+	#22 GRN/YEL	1
THERMISTOR	WHT/GRY	2
5 VDC	#22 RED	3
ID	#24 VIO/WHT	4
HALL B	#26 VIO/RED	5
MRK-	W/ORN	6
MRK+	ORN	7
DATA-	PNK	8
TCOMP	BRN	9
HALL A	#24 GRN	10
HALL C	WHT/RED	11
CW EOT	#24 VIO	12
BRAKE -	#22 RED/ORN	13
COS+	YEL	14
COS-	W/YEL	15
5 VDC	#22 BLK/ORN	16
SIN+	BLU	17
SIN-	W/BLU	18
DATA+	GRY	19
LIMIT COMMON	#22 WHT/ORN	20
ENC COMMON	#22 BLK	21
RESERVED	#26 GRN/RED	22
AuxAnalogIn 1 / Serial+	WHT/BLK	23
CCW EOT	WHT/BRN	24
BRAKE +	#22 WHT	25

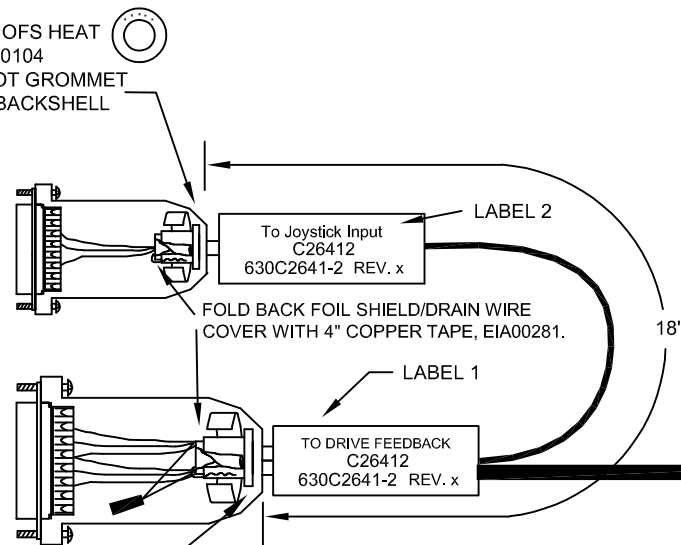
FROM MOTOR/STAGE



25D FEMALE, ECK00300  
BACKSHELL, ECK0656  
JACKSOCKETS ECK00129



ADD 3 LAYER OFS HEAT SHRINK, EIW00104 AND USE 5 DOT GROMMET SUPPLIED W/BACKSHELL



USE 3 DOT GROMMET SUPPLIED W/BACKSHELL

FOLD BACK FOIL SHIELD/DRAIN WIRE COVER WITH 4" COPPER TAPE, EIA00281.



USE 2 DOT GROMMET SUPPLIED W/BACKSHELL

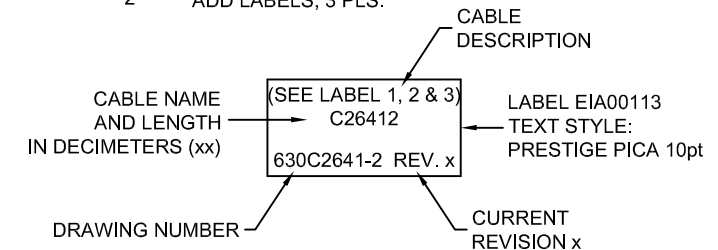
A.R. LENGTH



VERIFY GROMMET IS SECURED TIGHTLY AROUND CABLE. IF NECESSARY BUILD UP WITH SHRINK TUBING.

2

ADD LABELS, 3 PLS.



PROPRIETARY INFORMATION  
THIS DRAWING IS THE PROPERTY OF AEROTECH, INC. AND IS SUBMITTED IN CONFIDENCE AND SHALL NOT BE REPRODUCED NOR COPIED NOR DISCLOSED TO OTHERS UNDER PENALTY OF LAW.



AEROTECH, INC. 101 Zeta Drive  
Pittsburgh, PA. 15238  
(412)963-7470  
www.aerotech.com

FRACTIONS	DECIMALS	ANGLES
0 TO 6 ±1/32	.XX ±.01	± 0-30'
OVER 6 ±1/16	.XXX ±.005	

RMS FINISH  EXCEPT AS NOTED

A3200 TCOMP DEMULTIPLEXER  
FOR NPAQ/MR  
CABLE: TCOMP 25D 15D-25D-MAX10DM

DRAWN	JFM	12/29/2020
CHECKED	AGS	12/29/2020
APPD.	JFM	12/29/2020

PART CODE	SIZE	REV.
C26412	C	630C2641-2
SCALE	FILE NAME	SHEET
NTS	630C2641-2.Dwg	1 OF 1