

REVISIONS			
REV.	DESCRIPTION	DRAWN	DATE

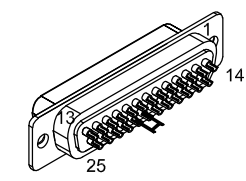
TO
CONTROLLER
-I/O BOARD

INSTALL FERRULES
EIK01085, WITH
APPROPRIATE TOOLING

PIN	WIRE	SIGNAL
AIN 1+	WHT	AIN 1+
AIN 1-	GRN	AIN 1-
AGND	GRY	AGND
N.C.	SHIELD	SHIELD

ECX01279
#24 AWG x 5
UNUSED WIRE:
VIO, PNK

TO
CONTROLLER
FEEDBACK



25D MALE, ECK00101
BACKSHELL, ECK0656
JUMPER 20-21 WITH EIK00351

PIN	WIRE	WIRE	SIGNAL
CASE	SHIELD	SHIELD	SHIELD
1	#22 GRN/YEL	-	AuxAnalogIn 3 / AuxSerial+
2	WHT/GRY	-	THERM
3	#22 RED	-	5 VDC
4	#24 VIO/WHT	-	ID
5	#26 VIO/RED	-	HALL B
6	W/ORN	-	MRK-
7	ORN	-	MRK+
8	PNK	-	DATA-
9	-	-	-
10	#24 GRN	-	HALL A
11	WHT/RED	-	HALL C
12	#24 VIO	-	CW EOT
13	#22 RED/ORN	-	BRAKE -
14	YEL	-	COS+
15	W/YEL	-	COS-
16	#22 BLK/ORN	-	5 VDC
17	BLU	-	SIN+
18	W/BLU	-	SIN-
19	GRY	-	DATA+
20	#22 WHT/ORN	GRN	LIMIT COMMON
21	#22 BLK	GRY	ENC COMMON
22	#26 GRN/RED	-	RESERVED
23	WHT/BLK	-	AuxAnalogIn 1 / AuxSerial+
24	WHT/BRN	-	CCW EOT
25	#22 WHT	-	BRAKE +

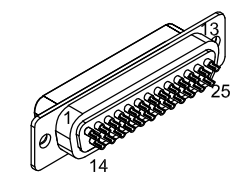
WHT
SPLICE
BRN

ECX01439
27 COND.
#28 AWG, UNLESS NOTED

INNER UNUSED WIRES:
#22 GRN/ORN, #24 GRN/WHT
OUTER UNUSED #28 WIRES:
NONE

SIGNAL	WIRE	PIN
SHIELD	SHIELD	CASE
AuxAnalogIn 3 / Serial+	#22 GRN/YEL	1
THERM	WHT/GRY	2
5 VDC	#22 RED	3
ID	#24 VIO/WHT	4
HALL B	#26 VIO/RED	5
MRK-	W/ORN	6
MRK+	ORN	7
DATA-	PNK	8
TCOMP	BRN	9
HALL A	#24 GRN	10
HALL C	WHT/RED	11
CW EOT	#24 VIO	12
BRAKE -	#22 RED/ORN	13
COS+	YEL	14
COS-	W/YEL	15
5 VDC	#22 BLK/ORN	16
SIN+	BLU	17
SIN-	W/BLU	18
DATA+	GRY	19
LIMIT COMMON	#22 WHT/ORN	20
ENC COMMON	#22 BLK	21
RESERVED	#26 GRN/RED	22
AuxAnalogIn 1 / Serial+	WHT/BLK	23
CCW EOT	WHT/BRN	24
BRAKE +	#22 WHT	25

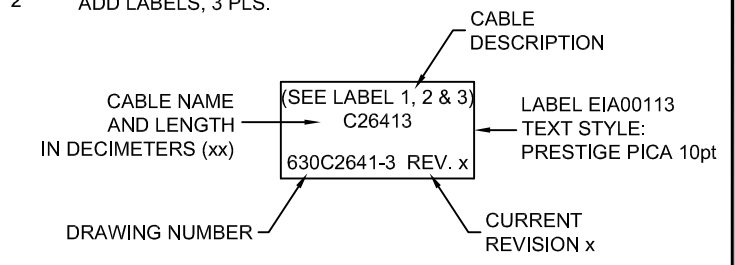
FROM
MOTOR/STAGE



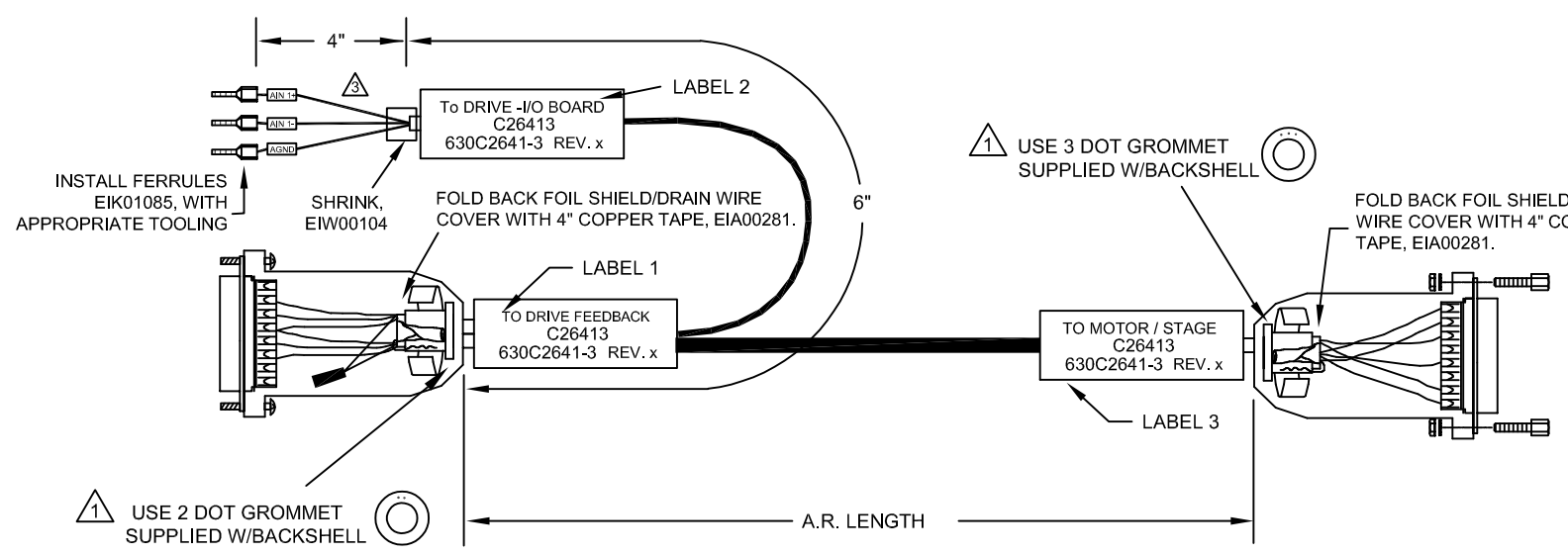
25D FEMALE, ECK00300
BACKSHELL, ECK0656
JACKSOCKETS ECK00129

1 VERIFY GROMMET IS SECURED TIGHTLY AROUND CABLE. IF NECESSARY BUILD UP WITH SHRINK TUBING.

2 ADD LABELS, 3 PLS.



WIRE MARKERS
LABEL DISCRETE WIRES WITH BRADY WIRE MARKING SLEEVE, EIA01161



PROPRIETARY INFORMATION THIS DRAWING IS THE PROPERTY OF AEROTECH, INC. AND IS SUBMITTED IN CONFIDENCE AND SHALL NOT BE REPRODUCED NOR COPIED NOR DISCLOSED TO OTHERS UNDER PENALTY OF LAW.		
TOLERANCES ON FRACTIONS DECIMALS ANGLES 0 TO 6 ±1/32 .XX ±.01 ± 0-30' OVER 6 ±1/16 .XXX ±.005		
RMS FINISH	✓	EXCEPT AS NOTED
DRAWN	JFM	12/29/2020
CHECKED	AGS	12/29/2020
APPD.	JFM	12/29/2020

AEROTECH® AEROTECH, INC. 101 Zeta Drive
Pittsburgh, PA. 15238
(412)963-7470
www.aerotech.com

**A3200 TCOMP DEMULTIPLEXER
(FLYING LEADS) FOR NdriveXX-I/O Option
CABLE: TCOMP 25D FLY-25D-MAX10DM**

PART CODE	SIZE	REV.
C26413	C	630C2641-3
SCALE	FILE NAME	SHEET
NTS	630C2641-3.Dwg	1 OF 1