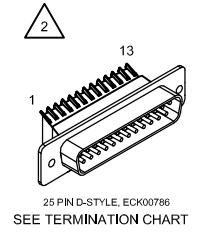
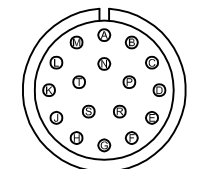


REVISIONS			
REV.	DESCRIPTION	DATE	DRAWN
A	UPDATED LAYERS FOR EPICOR	7/13/2017	JFM
B	ADDED ECO 2415	10/28/2018	JFM

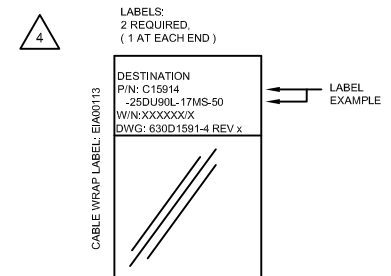


CONTROL END



STRAIGHT PLUG MS3106A-20, MCM00454
INSERT MS20-29S, MCM00464
CLAMP 97-3057-1012, MCM00457
BUSHING AN3055-22-12, MCM00493

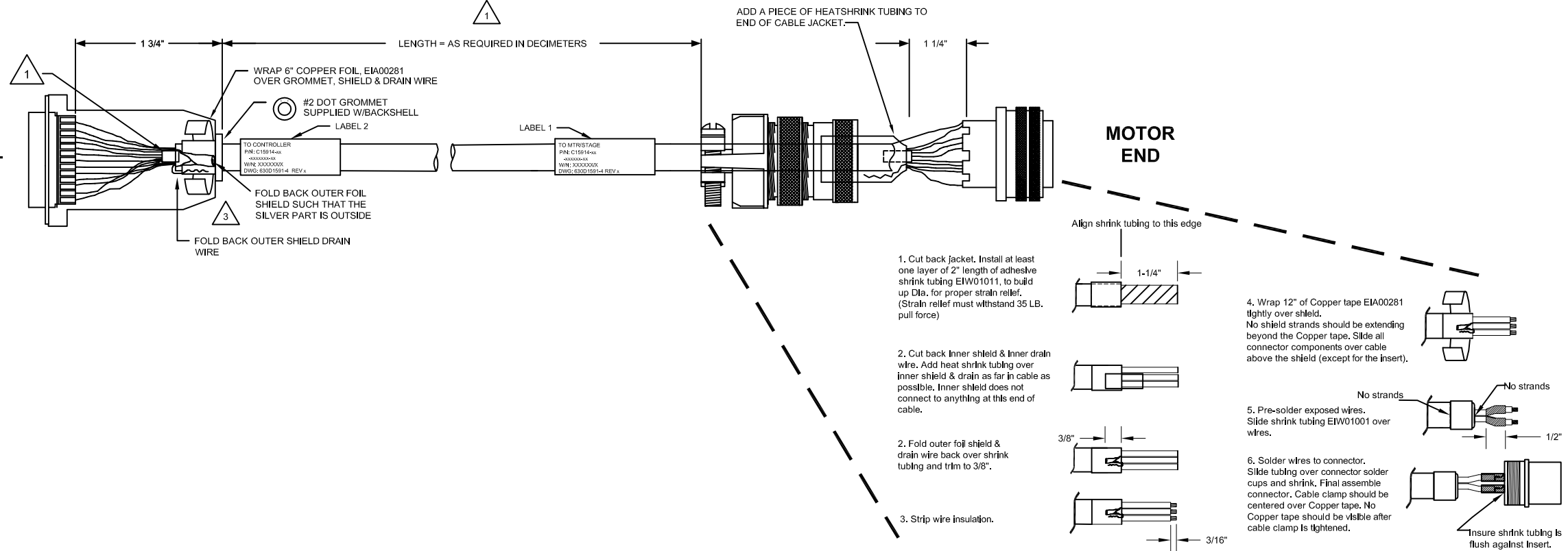
MOTOR END



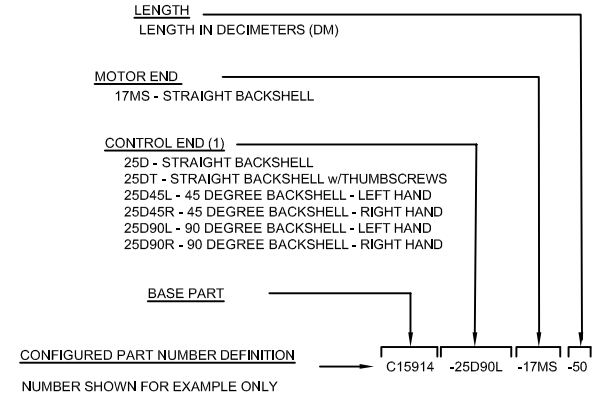
- 3 USE 2" LENGTHS OF THICK WALL HEATSHRINK TUBING (EIW00113 AND EIW00112) TO BUILD UP CABLE DIAMETER FOR PROPER STRAIN RELIEFING. STRAIN RELIEFING MUST WITHSTAND 35 LB. PULL.
CUT THICK WALL HEATSHRINK TUBING WITH CABLE CUTTER SUCH THAT ENDS ARE PERPENDICULAR TO CABLE AND CUT IS SMOOTH.
THICK WALL HEATSHRINK TUBING:
EIW00112 MAX INSIDE DIA = .750" (EXPANDED),
MIN INSIDE DIA = .220" (RECOVERED)
EIW00113 MAX INSIDE DIA = .400" (EXPANDED),
MIN INSIDE DIA = .150" (RECOVERED)
- 2 FOR CRIMP TOOL USE AMP HANDLE ASSY 58074-1 WITH AMP HEAD ASSY 58063-2
- 1 STARTING CABLE LENGTH = 6 IN. BEYOND SPECIFIED LENGTH OF CABLE

CONTROL END

MOTOR END



TERMINATION CHART



CONFIGURED CABLE PROCEDURE:

- THE PURPOSE OF THIS DRAWING IS TO DEFINE THE BACKSHELL AND SCREWLOCK TYPES AS REQUIRED BY THE WORK ORDER.
- 1.) LOCATE THE SHOP TRAVELLER FOR CABLE TO BE MANUFACTURED.
 - 2.) USING SHOP TRAVELLER AND TERMINATION CHART AT RIGHT:
 - a.) DETERMINE "CONTROL END" TERMINATION.
 - 3.) USING THE ABOVE INFORMATION, MANUFACTURE CABLE WITH APPROPRIATE TERMINATIONS.
 - 4.) LABEL CABLE WITH CONFIGURED PART NUMBER, FOLLOWING THE "CONFIGURED PART NUMBER DEFINITION" SHOWN ABOVE THE TITLE BLOCK

<p>25D90L 90 DEGREE BACKSHELL, ECK01370 LEFT HANDED VIEW LOOKING INTO CONTACT SIDE OF CABLE CONNECTOR</p> <p>CABLE EXIT</p>	<p>25D90R 90 DEGREE BACKSHELL, ECK01370 RIGHT HANDED VIEW LOOKING INTO CONTACT SIDE OF CABLE CONNECTOR</p> <p>CABLE EXIT</p>	<p>25D45L 45 DEGREE BACKSHELL, ECK01070 LEFT HANDED VIEW LOOKING INTO CONTACT SIDE OF CABLE CONNECTOR</p> <p>CABLE EXIT</p>	<p>25D45R 45 DEGREE BACKSHELL, ECK01070 RIGHT HANDED VIEW LOOKING INTO CONTACT SIDE OF CABLE CONNECTOR</p> <p>CABLE EXIT</p>	<p>25D STRAIGHT BACKSHELL, ECK00656 VIEW LOOKING INTO CONTACT SIDE OF CABLE CONNECTOR</p>	<p>25DT STRAIGHT BACKSHELL, ECK00656 THUMBSCREWS, ECK01247 VIEW LOOKING INTO CONTACT SIDE OF CABLE CONNECTOR</p>
--	---	--	---	--	---

PROPRIETARY INFORMATION
THIS DRAWING IS THE PROPERTY OF AEROTECH, INC. AND IS SUBMITTED IN CONFIDENCE AND SHALL NOT BE REPRODUCED NOR COPIED NOR DISCLOSED TO OTHERS UNDER PENALTY OF LAW.

AEROTECH
AEROTECH, INC. 101 Zeta Drive
Pittsburgh, PA, 15238
(412)963-7470
www.aerotech.com

TOLERANCES ON FRACTIONS DECIMALS ANGLES
0 TO 6 ±1/32 .XX ±01 ± 0-30
OVER 6 ±1/16 .XXX ±005

RMS FINISH EXCEPT AS NOTED

BRUSHLESS FEEDBACK CABLE
CON-CFG BL FB-25D-17MS-MAX220DM

DRAWN	AGS	5-30-08	PART CODE	SIZE	REV.
CHECKED	JLD	5-30-08	C15914	D	B
APPD.	JLD	5-30-08	SCALE	FILE NAME	SHEET
			NTS	630D1591-4.DWG	1 OF 1