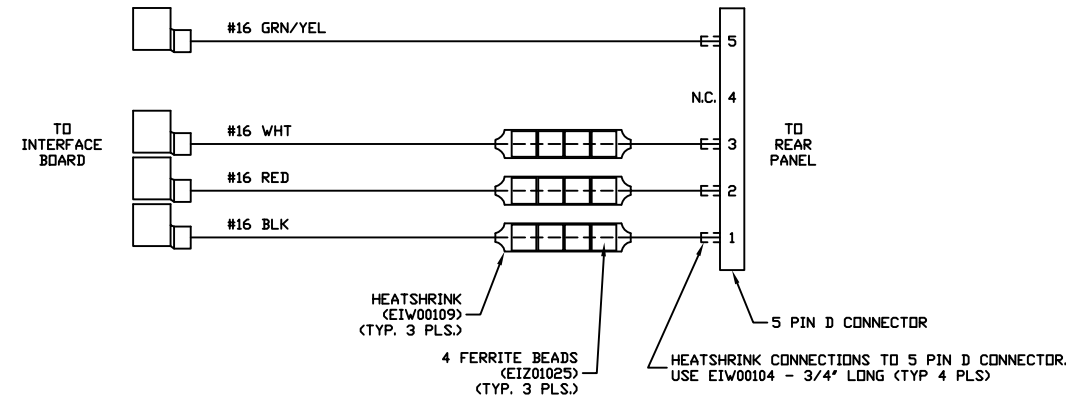
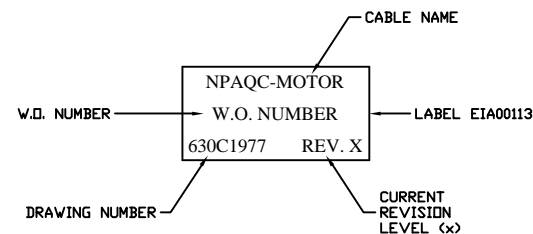
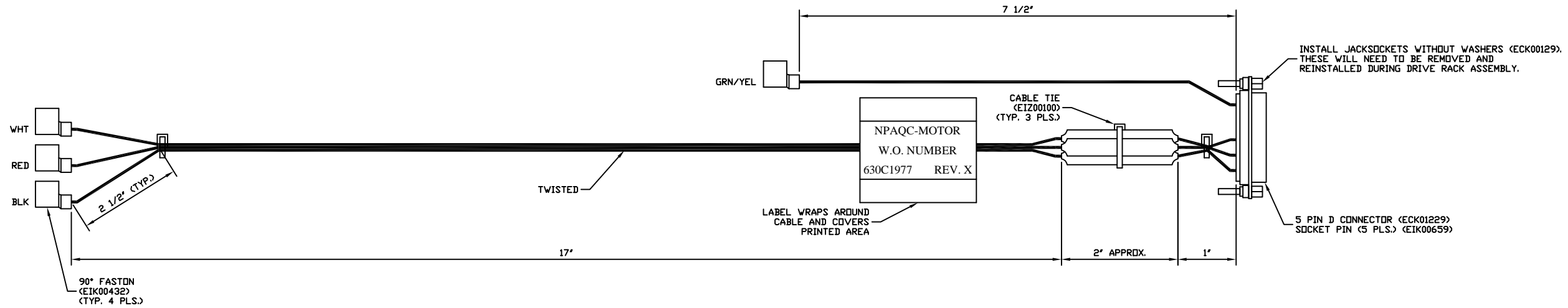



REVISIONS				
REV.	ZONE	DESCRIPTION	DATE	DRAWN
A		ADDED ECN6587	12/02	JRF
B		ADDED ECN6996,7004	07/03	JRF
C		ADDED ECN8666	04/05	JRF
D		ADDED ECN10590	11/07	WG



SCHEMATIC



- NOTES:
- 1) DRAWING CAN BE USED AS TEMPLATE
 - 2) PRE-CUT WIRE LENGTHS FOR WHT, RED AND BLK WIRES: 23"
 - 3) WIRE LENGTH TOLERANCES TO BE +.05", -0" PER 1'

PROPRIETARY INFORMATION THIS DRAWING IS THE PROPERTY OF AEROTECH, INC. AND IS SUBMITTED IN CONFIDENCE AND SHALL NOT BE REPRODUCED NOR COPIED NOR DISCLOSED TO OTHERS UNDER PENALTY OF LAW.			 AEROTECH, INC. 101 Zeta Drive Pittsburgh, PA. 15238 (412)963-7470 www.aerotech.com	
TOLERANCES ON FRACTIONS DECIMALS ANGLES 0 TO 6 ± 1/32 XX ± .01 ± 0-30° OVER 6 ± 1/16 .XXX ± .005			CABLE: NPAQ MOTOR CABLE ASSEMBLY	
RMS FINISH	EXCEPT AS NOTED			
DRAWN	JRF	09/02	PART CODE NPAQC-MOTOR	SIZE D
CHECKED	DES	09/02	630D1977	
APPD.	ARW	09/02	SCALE FULL	FILE NAME 630D1977D1.dwg
			SHEET	1 OF 1