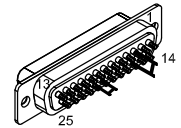


REV.		DESCRIPTION		REVISIONS		DATE	DRAWN
A		Added ECO 2257				9/5/2018	JFM

PRIMARY



25 PIN MALE D-STYLE, ECK00101 BACKSHELL, ECK00656
GOLD JUMPERS, EIK00351 AT CONTACTS 3-16, 20-21.

PIN	SIGNAL	ECX01178	ECX01366	ECX01279
13	BRK-	-	GRN	-
12	CW / +	-	-	WHT
11	HALL C	-	GRN/W	-
10	HALL A	-	BRN/W	-
9	Tcmp	-	ORN	-
8	ABS DATA-	W/GRN	-	-
7	MKR/CLK+	WHT	-	-
6	MKR-N/CLK-	GRN	-	-
5	HALL B	-	GRY/W	-
4	ID	-	-	PNK
3	ENC +5V	W/RED	#24 VIO	-
2	THERMISTOR	-	BRN	-
1	Aux3	-	W/ORN	-
CASE	SHIELD	FOILS/DRAIN	BRAID	FOIL/DRAIN
14	COS	-	YEL	-
15	COS-N	-	W/YEL	-
16	LMT +5V	RED	#24 RED	VIO
17	SIN	-	BLU	-
18	SIN-N	-	W/BLU	-
19	ABS DATA+	W/YEL	-	-
20	LMT COM	BLK	#24 BLK	GRN
21	ENC COM	W/BLK	#24 GRY	-
22	-	-	-	-
23	-	-	-	-
24	CCW / -	-	-	GRY
25	BRK+	-	WHT	-

ECX01178 #22 x8
UNUSED WIRES: NONE

ECX01279 #24 x5

3/8" BLACK EXPANDO ECX01147

ECX01366 #24x4, #26x12
UNUSED WIRES: None

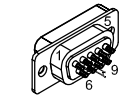
ECX01366 #24x4, #26x12
UNUSED WIRES: None

SIGNAL	ECX01279	PIN
CCW / -	GRY	5
-	-	4
CW / +	WHT	3
LMT COM	JUMPER & GRN	2
LMT +5V	VIO	1
SHIELD	DRAIN WIRE	CASE
-	-	6
COM	JMPR TO PIN 2	7
ID	PNK	8
-	-	9

SIGNAL	ECX01178	PIN
-	-	13
-	-	12
-	-	11
-	-	10
-	-	9
ABS DATA-	W/GRN	8
MKR/ABS CLK+	WHT	7
MKR-N/ABS CLK-	GRN	6
-	-	5
-	-	4
ENC +5V	W/RED	3
-	-	2
SHIELD	FOIL/DRAIN	CASE
-	-	14
-	-	15
LMT +5V	RED	16
-	-	17
-	-	18
ABS DATA+	W/YEL	19
LMT COM	BLK	20
ENC COM	W/BLK	21
-	-	22
-	-	23
-	-	24
-	-	25

SIGNAL	ECX01366	PIN
BRK-	GRN	13
-	-	12
HALL C	GRN/W	11
HALL A	BRN/W	10
Tcmp	ORN	9
-	-	8
MKR	-	7
MKR-N	-	6
HALL B	GRY/W	5
-	-	4
ENC +5V	#24 VIO	3
THERMISTOR	BRN	2
Aux3	W/ORN	1
SHIELD	BRAID	CASE
COS	YEL	14
COS-N	W/YEL	15
LMT +5V	#24 RED	16
SIN	BLU	17
SIN-N	W/BLU	18
-	-	19
LMT COM	#24 BLK	20
ENC COM	#24 GRY	21
-	-	22
-	-	23
-	-	24
BRK+	WHT	25

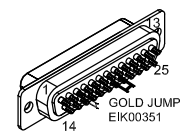
LIMITS



9 PIN D-FEMALE, ECK00340 BACKSHELL, ECK01021

GOLD JUMPERS, EIK00351 AT CONTACTS 2-7.

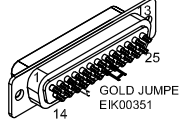
LINEAR



25-PIN D-FEMALE, ECK00300 BACKSHELL, ECK00656

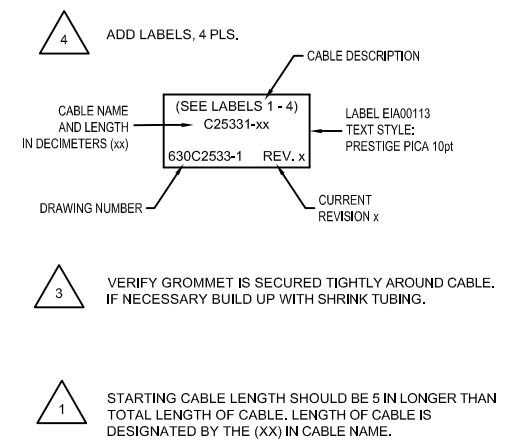
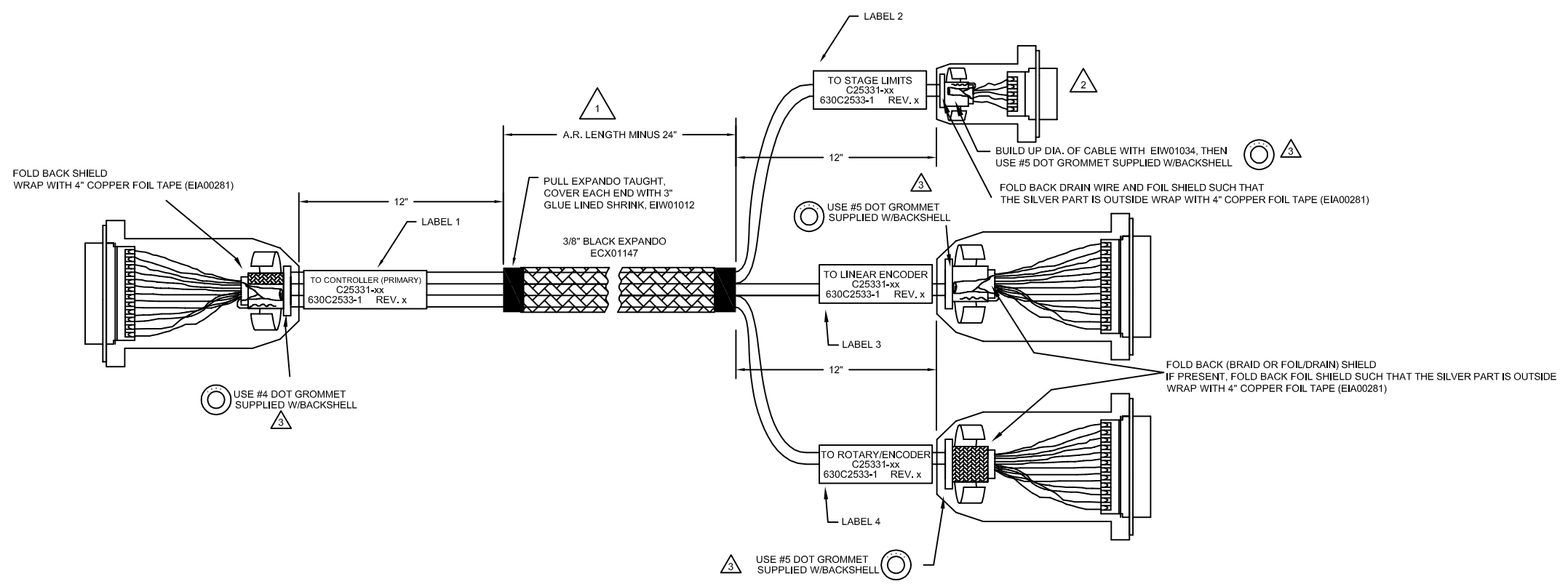
GOLD JUMPERS, EIK00351 AT CONTACTS 3-16, 20-21.

ROTARY



25-PIN D-FEMALE, ECK00300 BACKSHELL, ECK00656 ADD SCREW LOCKS

GOLD JUMPERS, EIK00351 AT CONTACTS 3-16, 20-21.



PROPRIETARY INFORMATION THIS DRAWING IS THE PROPERTY OF AEROTECH, INC. AND IS SUBMITTED IN CONFIDENCE AND SHALL NOT BE REPRODUCED NOR COPIED NOR DISCLOSED TO OTHERS UNDER PENALTY OF LAW.		AEROTECH, INC. 101 Zeta Drive Pittsburgh, PA, 15238 (412)963-7470 www.aerotech.com	
TOLERANCES ON FRACTIONS DECIMALS ANGLES 0 TO 6 ±1/32 .XX ±0.1 ° 0-30' OVER 6 ±1/16 .XXX ±0.005		PRO SLe Dual Feedback Cable (ABS FEEDBACK) BL ABS-FB-25D 25D-25D-9D-MAX73DM	
RMS FINISH	EXCEPT AS NOTED	PART CODE	SIZE
DRAWN	11/6/2015 JFM	C25331	D
CHECKED	11/6/2015 JAB	630D2533-1	
APPD.	11/6/2015 JFM	SCALE	NTS
FILE NAME		630D2533-1.Dwg	
SHEET		1 OF 1	