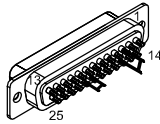


ECX01366  
#24x4,#26x12  
UNUSED  
WIRES: YEL,  
W/YEL, BLU,  
W/BLU

SIGNAL	ECX01366	ECX01366	PIN
BRK-		GRN	13
CW / +	WHT		12
HALL C		GRN/W	11
HALL A		BRN/W	10
			9
ABS DATA-	W/GRN		8
MKR/CLK+	ORN		7
MKR-N/CLK-	W/ORN		6
HALL B		GRY/W	5
ID	BRN		4
ENC +5V	#24 VIO	#24 VIO	3
THERMISTOR		BRN	2
SHIELD	BRAID	BRAID	CASE
COS		YEL	14
COS-N		W/YEL	15
LMT +5V	#24 RED	#24 RED	16
SIN		BLU	17
SIN-N		W/BLU	18
ABS DATA+	GRN		19
LMT COM	#24 BLK	#24 BLK	20
ENC COM	#24 GRY	#24 GRY	21
	#26 W/BRN		22
			23
CCW / -	W/GRY		24
BRK+		WHT	25

**PRIMARY**



25 PIN MALE D-STYLE, ECK00101  
BACKSHELL, ECK0656  
GOLD JUMPERS, EIK00351  
AT CONTACTS 3-16, 20-21.

ECX01366  
#24x4,#26x12  
UNUSED  
WIRES: ORN,  
W/ORN

3/8" BLACK EXPANDO  
ECX01147

ECX01279  
#24 x5

SPLICE  
WITH EIW00100  
INSIDE  
BACKSHELL

ECX01366  
#24x4,#26x12  
UNUSED  
WIRES: YEL,  
W/YEL, BLU,  
W/BLU

PNK  
BRN  
WHT  
WHT  
GRY  
W/GRY

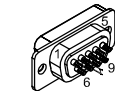
ECX01366  
#24x4,#26x12  
UNUSED WIRES:  
ORN, W/ORN

SIGNAL	ECX01279	PIN
CCW / -	GRY	5
		4
CW / +	WHT	3
LMT COM	JUMPER & GRN	2
LMT +5V	VIO	1
SHIELD	DRAIN WIRE	CASE
		6
COM	JMPR TO PIN 2	7
ID	PNK	8
		9

SIGNAL	ECX01279	ECX01366	PIN
			13
			12
			11
			10
			9
ABS DATA-		W/GRN	8
MKR/ABS CLK+		ORN	7
MKR-N/ABS CLK-		W/ORN	6
			5
			4
ENC +5V	VIO	#24 VIO	3
			2
SHIELD	FOIL/DRAIN	BRAID	CASE
			14
			15
LMT +5V		#24 RED	16
			17
			18
ABS DATA+		GRN	19
LMT COM	GRN	#24 BLK	20
ENC COM		#24 GRY	21
		#26 W/BRN	22
			23
			24
			25

SIGNAL	ECX01366	PIN
BRK-	GRN	T
HALL C	GRN/W	P
HALL A	BRN/W	K
MKR		E
MKR-N		F
HALL B	GRY/W	M
THERMISTOR	BRN	L
SHIELD	BRAID	CASE
COS	YEL	A
COS-N	W/YEL	B
+5V	#24 VIO	H
SIN	BLU	C
SIN-N	W/BLU	D
COM	#24 BLK	G
BRK+	WHT	S

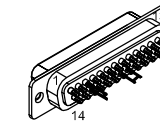
**LIMITS**



9 PIN D, FEMALE, ECK00340  
BACKSHELL, ECK1021

GOLD JUMPERS, EIK00351  
AT CONTACTS 2-7.

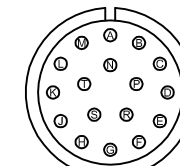
**LINEAR**



25-PIN D-FEMALE, ECK00300  
BACKSHELL, ECK0656

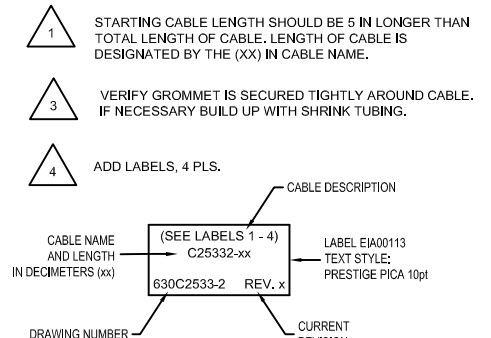
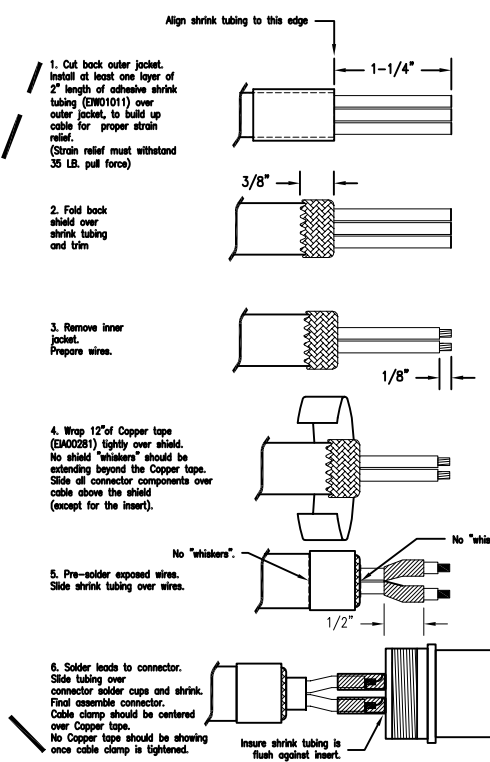
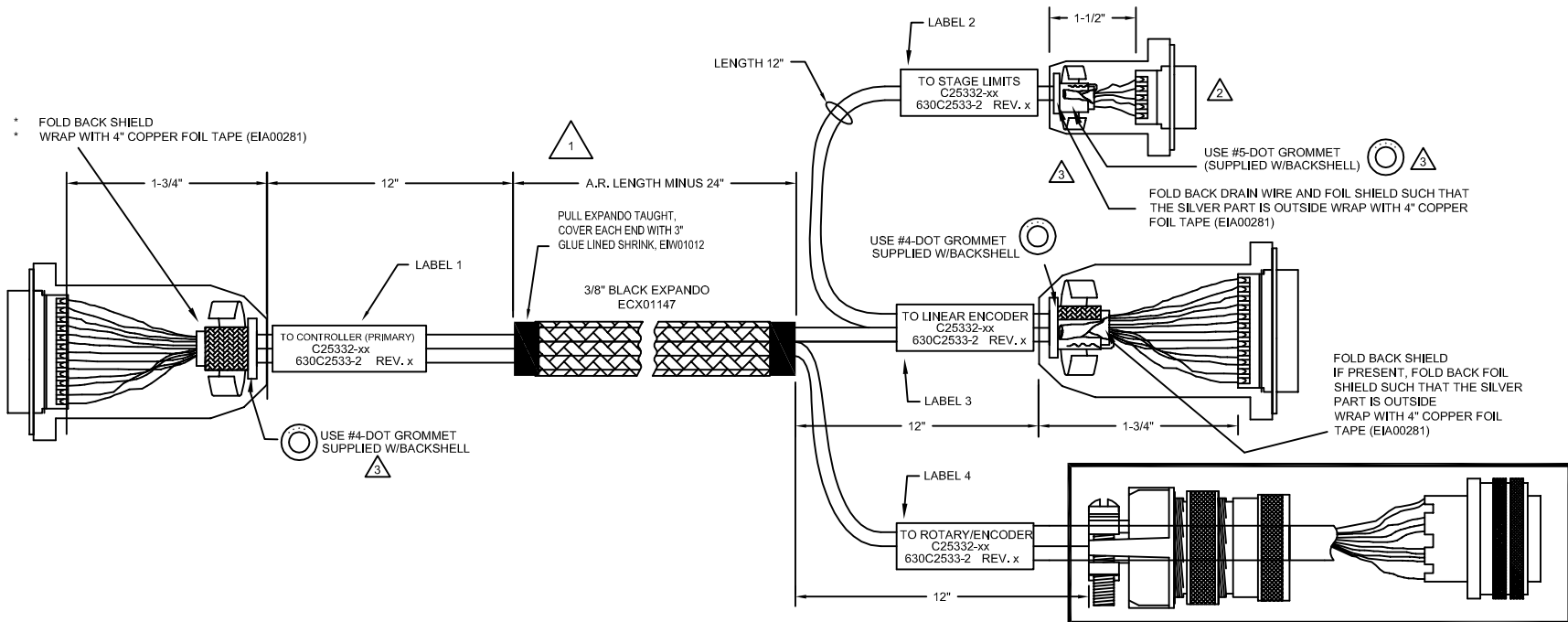
GOLD JUMPERS, EIK00351  
AT CONTACTS 3-16, 20-21.

**ROTARY**



WIRE SIDE VIEW

STRAIGHT PLUG MCM00454  
INSERT MCM00464  
CLAMP MCM00457  
BUSHING MCM00493



PROPRIETARY INFORMATION THIS DRAWING IS THE PROPERTY OF AEROTECH, INC. AND IS SUBMITTED IN CONFIDENCE AND SHALL NOT BE REPRODUCED NOR COPIED NOR DISCLOSED TO OTHERS UNDER PENALTY OF LAW.		AEROTECH, INC. 101 Zeta Drive Pittsburgh, PA, 15238 (412)963-7470 www.aerotech.com	
TOLERANCES ON FRACTIONS DECIMALS ANGLES 0 TO 6 1/32 .XX ±01 ° 0-30' OVER 6 1/16 .XXX ±005		PRO SLe Dual Feedback Cable (INCL. ABS FEEDBACK) BL FB-25D 17MS-25D-9D-MAX73DM	
RMS FINISH	EXCEPT AS NOTED	PART CODE	SIZE
DRAWN	11/17/2015	JFM	C25332 D
CHECKED	11/19/2015	JJK	630D2533-2
APPD.	11/17/2015	JFM	REV. -
SCALE	NTS	FILE NAME	630D2533-2.Dwg
SHEET	1 OF 1		