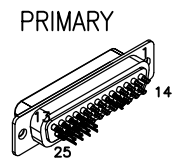


REVISIONS				
REV.	ZONE	DESCRIPTION	DATE	DRAWN

PIN	SIGNAL	ECX01366	ECX00428	ECX01338
13	MTR 0C	-	-	-
12	MTR 0B	-	W/RED	-
11	MTR 0A	-	BRN	-
10	FRM	-	YEL	-
9	HALL C	-	-	#28 BLU
8	HALL A	-	-	#28 RED
7	CCW / -	W/GRY	-	-
6	LMT COM	#24 BLK	-	#28 BLK
5	ENC COM	#24 GRN	-	#28 GRN
4	MKR-N	W/ORN	-	-
3	SIN-N	W/BLU	-	-
2	COS-N	W/YEL	-	-
1	KEY	-	-	-
CASE	SHIELD	BRAID	FOIL/DRAIN	-
14	COS	YEL	-	-
15	SIN	BLU	-	-
16	MKR	ORN	-	-
17	+5V	#24 RED	-	-
18	ID	BRN	-	-
19	CW / +	WHT	-	-
20	THERMISTOR	-	-	#28 BRN
21	HALL B	-	-	#28 GRN
22	FRM	-	W/GRN	-
23	MTR 0A	-	TAN	-
24	MTR 0B	-	W/ORN	-
25	MTR 0C	-	W/BRN	-

PIN	SIGNAL	ECX01366
13	-	-
12	-	-
11	-	-
10	-	-
9	-	-
8	-	-
7	-	-
6	LMT COM	#24 GRN
5	ENC COM	#24 BLK
4	MKR-N	W/ORN
3	SIN-N	W/BLU
2	COS-N	W/YEL
1	KEY	-
CASE	SHIELD	BRAID
14	COS	YEL
15	SIN	BLU
16	MKR	ORN
17	+5V	#24 RED & #24 VIO
18	ID	BRN
19	-	-
20	-	-
21	-	-
22	-	-
23	-	-
24	-	-
25	-	-

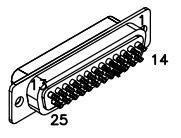


PRIMARY

25 PIN MALE D-STYLE, ECK00101 BACKSHELL, ECK00656 ADD SCREW LOCKS

GOLD JUMPERS, EIK00351 AT CONTACTS 5-6, 10-22, 11-23, 12-24, 13-25.

REMOVE PIN #1 FOR KEYING.



SECONDARY

25 PIN MALE D-STYLE, ECK00101 BACKSHELL, ECK00656 ADD SCREW LOCKS

GOLD JUMPERS, EIK00351 AT CONTACTS 5-6.

REMOVE PIN #1 FOR KEYING.

ECX01366
#24x4, #26x12
UNUSED WIRES:
GRN, W/GRN

ECX01338
#28x14
UNUSED WIRES:
WHT, YEL, ORN,
W/ORN, VIO,
W/YEL, W/BRN,
W/RED

ECX00428
#22x10
UNUSED WIRES:
W/YEL, W/GRY

SPLICE WITH EIW00100 INSIDE BACKSHELL

ECX01366
#24x4, #26x12
UNUSED WIRES:
GRN, W/GRN

ECX01338
#28x14
UNUSED WIRES:
WHT, YEL, ORN,
W/ORN, VIO,
W/YEL, W/BRN,
W/RED

ECX01366
#24x4, #26x12
UNUSED WIRES:
BRN, W/BRN, GRN,
W/GRN, WHT, W/GRY

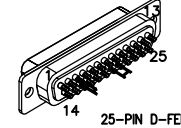
ECX01279
#24 x5

SIGNAL	ECX01279	ECX01366	PIN
-	-	-	13
-	-	-	12
-	-	-	11
-	-	-	10
-	-	-	9
-	-	-	8
MKR	-	ORN	7
MKR-N	-	W/ORN	6
-	-	-	5
ENC +5V	VIO	#24 VIO	4
-	-	-	3
SHIELD	#22 GRN/W	FOIL/DRAIN	2
-	-	-	1
COS	-	YEL	14
COS-N	-	W/YEL	15
LMT +5V	-	#24 RED	16
SIN	-	BLU	17
SIN-N	-	W/BLU	18
-	-	-	19
LMT COM	GRN	#24 BLK	20
ENC COM	-	#24 GRN	21
-	-	-	22
-	-	-	23
-	-	-	24
-	-	-	25

SIGNAL	ECX01338	ECX01366	PIN
-	-	-	13
-	-	-	12
HALL C	#28 BLU	-	11
HALL A	#28 RED	-	10
-	-	-	9
-	-	-	8
MKR	-	ORN	7
MKR-N	-	W/ORN	6
HALL B	#28 GRN	-	5
-	-	-	4
ENC +5V	-	#24 VIO	3
THERMISTOR	#28 BRN	-	2
SHIELD	#22 GRN/W	FOIL/DRAIN	1
-	-	-	14
COS	-	YEL	14
COS-N	-	W/YEL	15
LMT +5V	-	#24 RED	16
SIN	-	BLU	17
SIN-N	-	W/BLU	18
-	-	-	19
LMT COM	#28 GRN	#24 GRN	20
ENC COM	#28 BLK	#24 BLK	21
-	-	-	22
-	-	-	23
-	-	-	24
-	-	-	25

SIGNAL	ECX01279	PIN
CCW / -	GRY	5
-	-	4
CW / +	WHT	3
LMT COM	JUMPER & GRN	2
LMT +5V	VIO	1
SHIELD	<- #22 GRN/W	CASE
-	-	6
COM	JMPR TO PIN 2	7
ID	PNK	8
-	-	9

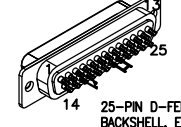
LINEAR



25-PIN D-FEMALE, ECK00300 BACKSHELL, ECK00656 ADD SCREW LOCKS

GOLD JUMPERS, EIK00351 AT CONTACTS 3-16, 20-21.

ROTARY



25-PIN D-FEMALE, ECK00300 BACKSHELL, ECK00656 ADD SCREW LOCKS

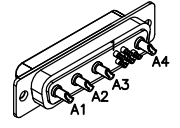
GOLD JUMPERS, EIK00351 AT CONTACTS 3-16, 20-21.

SIGNAL	WIRES	SOCKET
MTR 0A	BRN, TAN	A1
MTR 0B	W/RED, W/ORN	A2
MTR 0C	VIO, W/BRN	A3
FRM	W/GRN, YEL	A4
SHIELD	#22 W/GRN	1



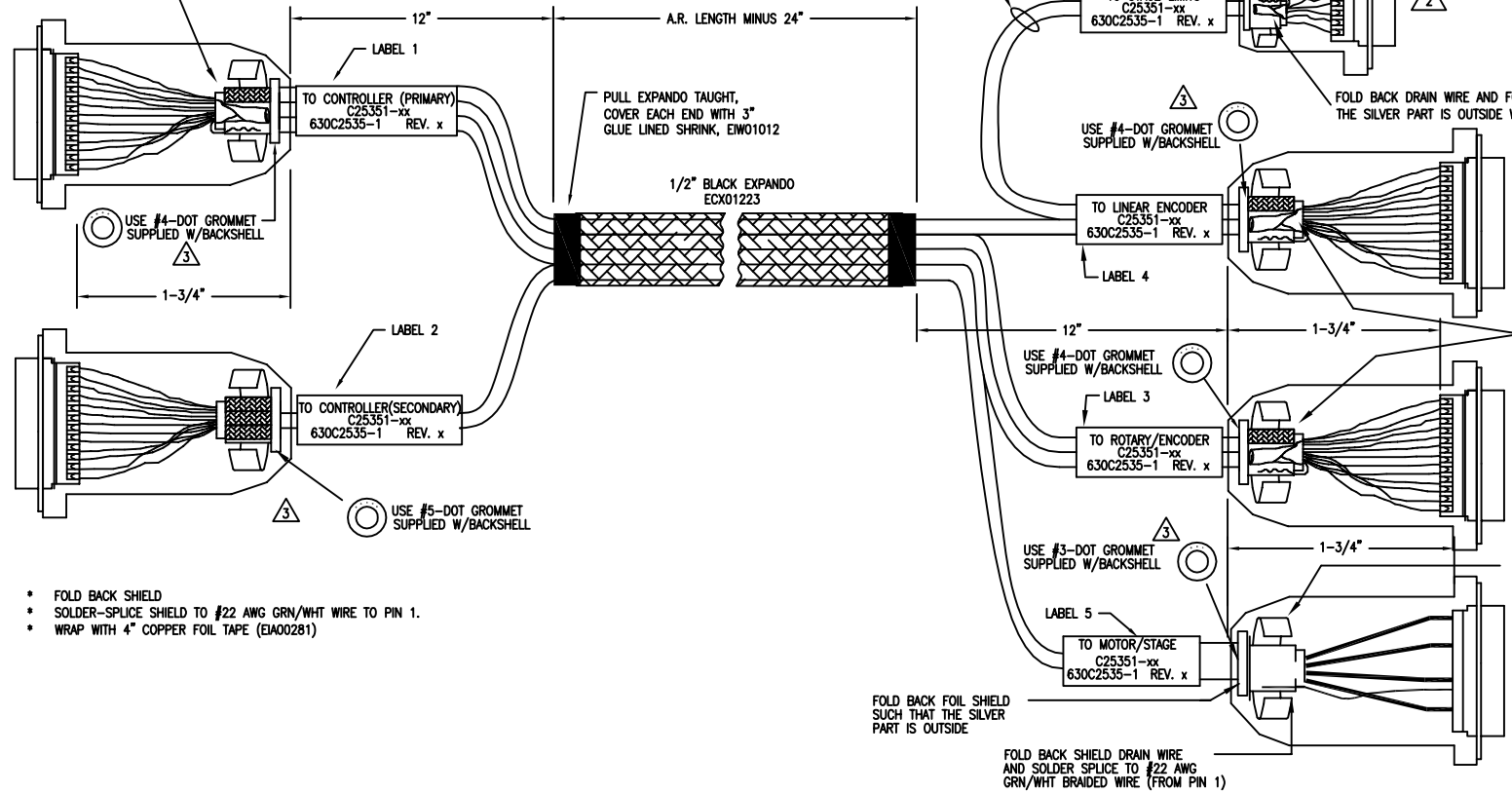
9 PIN D-MALE, ECK00137 BACKSHELL, ECK01021 ADD SCREW LOCKS

GOLD JUMPERS, EIK00351 AT CONTACTS 2-7.



HPD FEMALE "D", ECK00657 SOCKET CONTACT, ECK00659 BACK SHELL, ECK00656

- * FOLD BACK SHIELD
- * FOLD BACK FOIL SHIELD SUCH THAT THE SILVER PART IS OUTSIDE
- * SOLDER-SPLICE DRAIN WIRE TO #22 AWG GRN/WHT WIRE TO PIN 1.
- * WRAP WITH 4" COPPER FOIL TAPE (EIA00281)

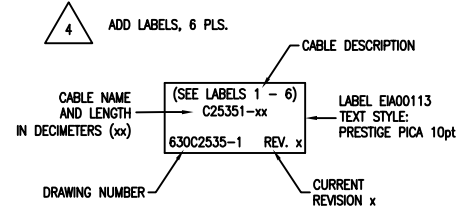


- * FOLD BACK SHIELD
- * FOLD BACK FOIL SHIELD SUCH THAT THE SILVER PART IS OUTSIDE
- * SOLDER-SPLICE DRAIN WIRE TO #22 AWG GRN/WHT WIRE TO PIN 1.
- * WRAP WITH 4" COPPER FOIL TAPE (EIA00281)

- * FOLD BACK SHIELD
- * SOLDER-SPLICE SHIELD TO #22 AWG GRN/WHT WIRE TO PIN 1.
- * WRAP WITH 4" COPPER FOIL TAPE (EIA00281)

FOLD BACK FOIL SHIELD SUCH THAT THE SILVER PART IS OUTSIDE

FOLD BACK SHIELD DRAIN WIRE AND SOLDER SPLICE TO #22 AWG GRN/WHT BRAIDED WIRE (FROM PIN 1)



- 4 ADD LABELS, 6 PLS.
- 3 VERIFY GROMMET IS SECURED TIGHTLY AROUND CABLE. IF NECESSARY BUILD UP WITH SHRINK TUBING.
- 2 FOR CRIMP TOOL USE AMP HANDLE ASSY 58074-1 WITH AMP HEAD ASSY 58063-2
- 1 STARTING CABLE LENGTH SHOULD BE 5 IN LONGER THAN TOTAL LENGTH OF CABLE. LENGTH OF CABLE IS DESIGNATED BY THE (XX) IN CABLE NAME.

PROPRIETARY INFORMATION THIS DRAWING IS THE PROPERTY OF AEROTECH, INC. AND IS SUBMITTED IN CONFIDENCE AND SHALL NOT BE REPRODUCED NOR COPIED NOR DISCLOSED TO OTHERS UNDER PENALTY OF LAW.

AEROTECH
Pittsburgh, PA, 15238
(412)963-7470
www.aerotech.com

TOLERANCES ON FRACTIONS DECIMALS ANGLES
0 TO 6 ±1/32 .XX ±.01 ±0-30'
OVER 6 ±1/16 .XXX ±.005

RMS FINISH EXCEPT AS NOTED

PRO SLe Dual Feedback to Lab Controller Cable

BL FB-25DU-25DU 25DU-25DU-4DU-9DU-MAX83DM

DRAWN	11/8/2015	JFM	PART CODE	SIZE	REV.
CHECKED	11/8/2015	JJK	C25351-xx	D	630D2535-1
APPD.	11/8/2015	JFM	SCALE	NTS	FILE NAME 630D2535-101.Dwg SHEET 1 OF 1