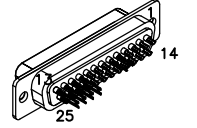


REVISIONS			
REV.	DESCRIPTION	DATE	DRAWN
A	ADDED ECO 28	7/14/2017	JFM

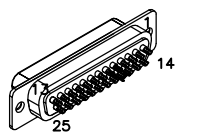
**PRIMARY**



25 PIN MALE D-STYLE, ECK00101 BACKSHELL, ECK00656  
ADD SCREW LOCKS, GOLD JUMPERS, EIK00351 AT CONTACTS 5-6, 10-22, 11-23, 12-24, 13-25.  
REMOVE PIN #1 FOR KEYING.

PIN	SIGNAL	ECX01366	ECX00428	ECX01338
13	MTR ØC	-	VJO	-
12	MTR ØB	-	W/RED	-
11	MTR ØA	-	BRN	-
10	FRM	-	YEL	-
9	HALL C	-	-	#28 BLU
8	HALL A	-	-	#28 RED
7	CCW / -	W/GRY	-	-
6	LMT COM	#24 BLK	-	#28 BLK
5	ENC COM	#24 GRY	-	#28 GRY
4	MKR-N	W/ORN	-	-
3	SIN-N	W/BLU	-	-
2	COS-N	W/YEL	-	-
1	KEY	-	-	-
CASE	SHIELD	BRAID	FOIL/DRAIN	FOIL/DRAIN

**SECONDARY**



25 PIN MALE D-STYLE, ECK00101 BACKSHELL, ECK00656  
ADD SCREW LOCKS, GOLD JUMPERS, EIK00351 AT CONTACTS 5-6.  
REMOVE PIN #1 FOR KEYING.

PIN	SIGNAL	ECX01366
13	-	-
12	-	-
11	-	-
10	-	-
9	-	-
8	-	-
7	-	-
6	LMT COM	#24 GRY
5	ENC COM	#24 BLK
4	MKR-N	W/ORN
3	SIN-N	W/BLU
2	COS-N	W/YEL
1	KEY	-
CASE	SHIELD	BRAID

ECX01366 #24 x 4, #26 x 12 UNUSED WIRES: GRN, W/GRN

ECX01338 #28 x 14 UNUSED WIRES: WHT, YEL, ORN, W/ORN, VJO, W/YEL, W/BRN, W/RED

ECX00428 #22 x 10 UNUSED WIRES: W/YEL, W/GRY

ECX01366 #24 x 4, #26 x 12 UNUSED WIRES: BRN, W/BRN, GRN, W/GRN, WHT, W/GRY

ECX01279 #24 x 5

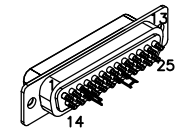
SIGNAL	ECX01279	ECX01366	PIN
-	-	-	13
-	-	-	12
-	-	-	11
-	-	-	10
-	-	-	9
-	-	-	8
MKR	-	ORN	7
MKR-N	-	W/ORN	6
-	-	-	5
ENC +5V	VJO	#24 VJO	3
-	-	-	2
SHIELD	FOIL/DRAIN	BRAID	CASE

SIGNAL	ECX01338	ECX01366	PIN
HALL C	#28 BLU	-	P
HALL A	#28 RED	-	K
MKR	-	ORN	E
MKR-N	-	W/ORN	F
HALL B	#28 GRN	-	M
THERM	#28 BRN	-	L
-	-	-	J
SHIELD	FOIL/DRAIN	BRAID	CASE

SIGNAL	ECX01366	ECX01366	PIN
COS	-	YEL	A
COS-N	-	W/YEL	B
+5V	-	#24 VJO	H
-	-	#24 RED	-
SIN	-	BLU	C
SIN-N	-	W/BLU	D
COM	#28 GRY	#24 GRY	G
-	#28 BLK	#24 BLK	-

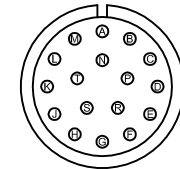
SIGNAL	ECX01279	PIN
CCW / -	GRY	5
-	-	4
CW / +	WHT	3
LMT COM	JUMPER & GRN	2
LMT +5V	VJO	1
SHIELD	-	CASE
-	-	6
COM	JMPTO PIN 2	7
ID	PNK	8
-	-	9

**LINEAR**



25-PIN D-FEMALE, ECK00300 BACKSHELL, ECK00656 ADD SCREW LOCKS  
GOLD JUMPERS, EIK00351 AT CONTACTS 3-16, 20-21.

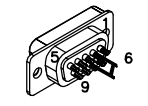
**ROTARY**



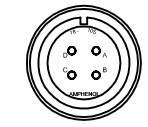
WIRE SIDE VIEW

STRAIGHT PLUG MS3106A-20, MCM00454  
INSERT MS20-29S, MCM00464  
CLAMP 97-3057-1012, MCM00477  
BUSHING AN3055-22-12, MCM00493

**LIMITS**



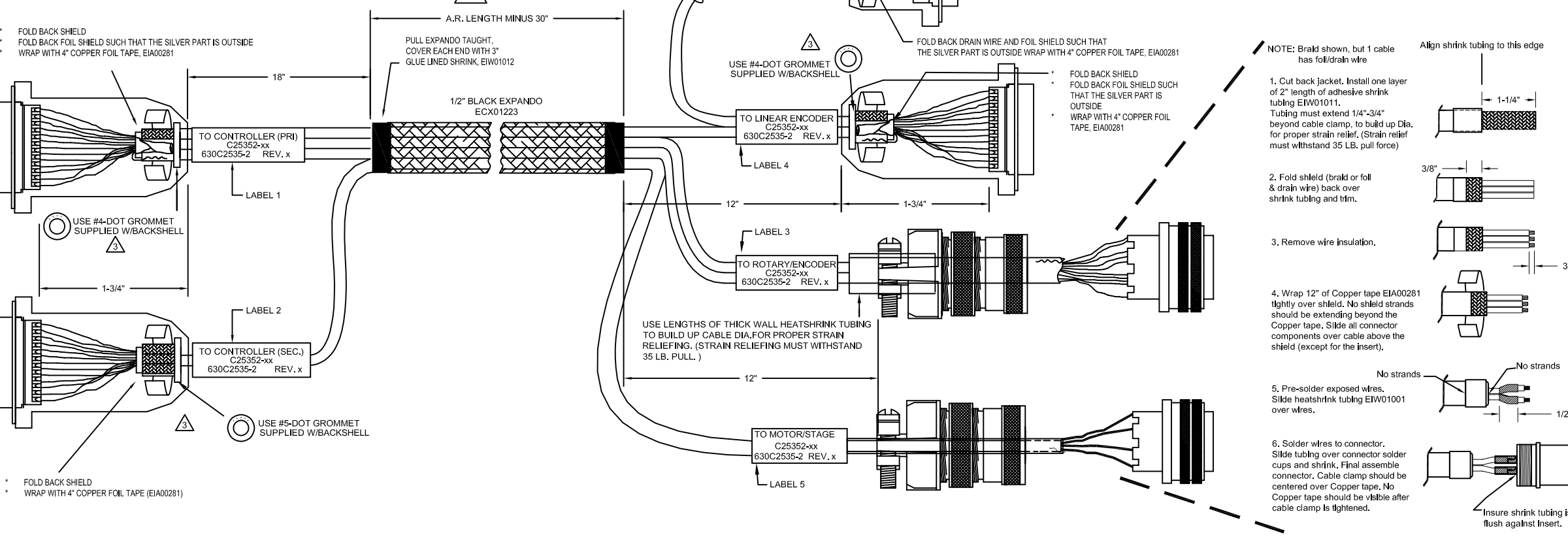
9 PIN D-MALE, ECK00137 BACKSHELL, ECK01021 ADD SCREW LOCKS  
GOLD JUMPERS, EIK00351 AT CONTACTS 2-7.



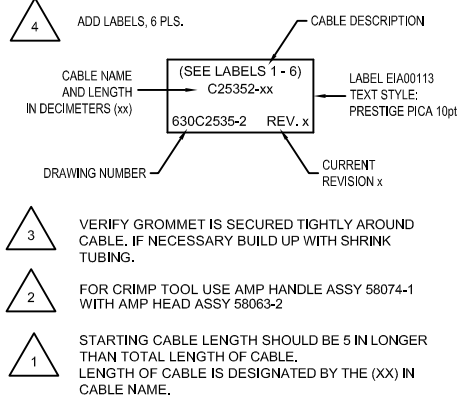
WIRE SIDE VIEW

STRAIGHT PLUG MS3106A-18, MCM00475  
INSERT MS18-10S, MCM00495  
CLAMP 97-3057-1010, MCM00477  
BUSHING AN3055-18-10, MCM00481

- \* FOLD BACK SHIELD
- \* FOLD BACK FOIL SHIELD SUCH THAT THE SILVER PART IS OUTSIDE
- \* WRAP WITH 4" COPPER FOIL TAPE, EIA00281



- NOTE: Braid shown, but 1 cable has foil/drain wire
1. Cut back jacket. Install one layer of 2" length of adhesive shrink tubing EIW01011. Tubing must extend 1/4"-3/4" beyond cable clamp, to build up Dia. for proper strain relief. (Strain relief must withstand 35 LB. pull force)
  2. Fold shield (braid or foil & drain wire) back over shrink tubing and trim.
  3. Remove wire insulation.
  4. Wrap 12" of Copper tape EIA00281 tightly over shield. No shield strands should be extending beyond the Copper tape. Slide all connector components over cable above the shield (except for the insert).
  5. Pre-solder exposed wires. Slide heatshrink tubing EIW01001 over wires.
  6. Solder wires to connector. Slide tubing over connector solder cups and shrink. Final assembly connector. Cable clamp should be centered over Copper tape. No Copper tape should be visible after cable clamp is tightened.



**PROPRIETARY INFORMATION**  
THIS DRAWING IS THE PROPERTY OF AEROTECH, INC. AND IS SUBMITTED IN CONFIDENCE AND SHALL NOT BE REPRODUCED NOR COPIED NOR DISCLOSED TO OTHERS UNDER PENALTY OF LAW.

**AEROTECH** AEROTECH, INC. 101 Zeta Drive  
Pittsburgh, PA, 15238  
(412) 963-7470  
www.aerotech.com

**TOLERANCES ON FRACTIONS**  
DECIMALS .XX ±0.1  
ANGLES ± 0-30'  
OVER 6 ± 1/16 .XXX ± 0.05

**RMS FINISH** EXCEPT AS NOTED

DRAWN	11/6/2015	JFM	PART CODE	SIZE	REV.
CHECKED	11/19/2015	JKK	C25352	D	A
APPD.	11/6/2015	JFM	SCALE	FILE NAME	SHEET
			NTS	630D2535-2.Dwg	1 OF 1

**PRO SLe Dual Feedback to Lab Controller Cable**  
BL FB-25D-25D 4MS-17MS-9D-3.5ARMS-MAX83DM