

STR. PLUG MS3106A-24 (MCM466) (STD)
 ANGLE PLUG MS3108A-24 (DPT.)
 ANGLE PLUG MS3108B-24 (MCM470) (DPT.)
 INSERT MS24-28P (MCM468)
 CLAMP 97-3057-1016 (MCM467)
 BUSHING AN3055-28-16 (MCM474)

682A1031 (ECX00445)
 #24 AWG UNLESS OTHERWISE NOTED

682A1031 (ECX00445)
 #24 AWG UNLESS OTHERWISE NOTED

STR. PLUG MS3106A-24 (MCM466) (STD)
 ANGLE PLUG MS3108A-24 (DPT.)
 ANGLE PLUG MS3108B-24 (MCM470) (DPT.)
 INSERT MS24-28S (MCM469)
 CLAMP 97-3057-1016 (MCM467)
 BUSHING AN3055-28-16 (MCM474)

REVISIONS				
REV.	ZONE	DESCRIPTION	DATE	DRAWN
A		WHT/BLK WAS BLK/BRN, WHT/RED WAS BLK, RED/WHT/VIO WAS BLK/DRN	1/10/92	AGS
B		CHANGED WIRE COLORS OF INSIDE BUNDLE	2/16/93	LTR
C		ADDED ECN2913	9/24/97	NTC

PIN	WIRE	SIGNAL
Z	WHT/VIO	TACH-
Y	WHT/RED	TACH+
X	#22 WHT/GRN	LMT COM
W	#22 WHT/BLU	LMT +5V
V	#20 YEL	MTR-
U	ORN	CW LMT Δ
T	PINK	HM LMT
S	GRY	CCW/- LMT
R	WHT	CW/+ LMT
Q	#20 BLU	MTR-
P	#20 ORN	MTR+
N(2/2)	#20 WHT	FRM GND
N(1/2)	#20 GRN	FRM GND
M	BLK	MKR-N
L	RED	SIN-N
K	VIO	COS-N
J	#20 RED	MTR+
H	BLU	CCW LMT Δ
G	BRN	MKR
F	GRN	SIN
E	WHT/BLK	COS
D	SHIELD	MTR SHLD
C	SHIELD	SIG SHLD
B	#22 WHT/YEL	ENC COM
A	#22 WHT/BRN	ENC+5V

UNUSED WIRES
 #20 BRN, #24 YEL

SIGNAL	WIRE	PIN
LMT +5V	#22 WHT/BLU	W
LMT COM	#22 WHT/GRN	X
TACH+	WHT/RED	Y
TACH-	WHT/VIO	Z
CW/+ LMT	WHT	R
CCW/- LMT	GRY	S
HM LMT	PINK	T
Δ CW LMT	ORN	U
MTR-	#20 YEL	V
COS-N	VIO	K
SIN-N	RED	L
MKR-N	BLK	M
FRM GND	#20 GRN	N(1/2)
FRM GND	#20 WHT	N(2/2)
MTR+	#20 ORN	P
MTR-	#20 BLU	Q
COS	WHT/BLK	E
SIN	GRN	F
MKR	BRN	G
Δ CCW LMT	BLU	H
MTR+	#20 RED	J
ENC+5V	#22 WHT/BRN	A
ENC COM	#22 WHT/YEL	B
SIG SHLD	SHIELD	C
MTR SHLD	SHIELD	D

3

ACTIVE HIGH SIGNALS FOR USE WITH PREVIOUS GENERATION AEROTECH CONTROLLERS (UNIDEX, UNIDEX 2, UNIDEX 3, UNIDEX 16).

2

USE 2" LENGTHS OF THICK WALL HEATSHRINK TUBING TO BUILD UP CABLE DIAMETER FOR PROPER STRAIN RELIEFING. STRAIN RELIEFING MUST WITHSTAND 35 LB. PULL.

CUT THICK WALL HEATSHRINK TUBING WITH CABLE CUTTER SUCH THAT ENDS ARE PERPENDICULAR TO CABLE AND CUT IS SMOOTH.

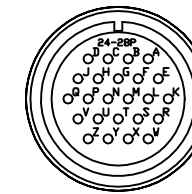
THICK WALL HEATSHRINK TUBING:

AMP # 53701-1 (EIW00112) MAX INSIDE DIA = .750" (EXPANDED), MIN INSIDE DIA = .220" (RECOVERED)

AMP # 53700-1 (EIW00113) MAX INSIDE DIA = .400" (EXPANDED), MIN INSIDE DIA = .150" (RECOVERED)

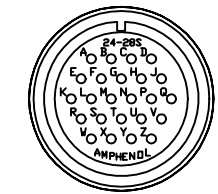
1

STARTING CABLE LENGTH = 15.5 FT



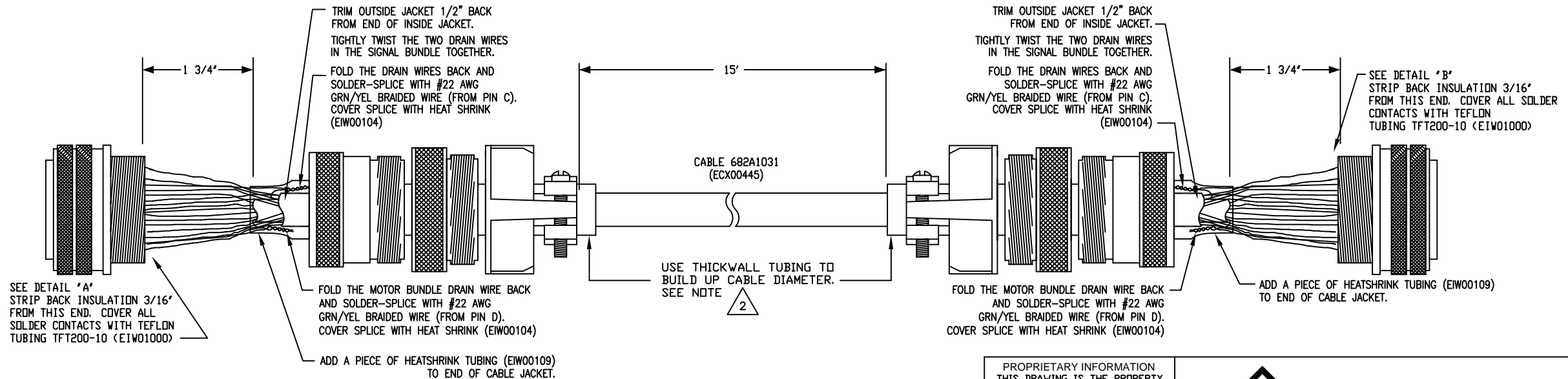
DETAIL "A"

INSERT MS24-28P (MCM468)
 VIEWED FROM WIRE SIDE OF CONNECTOR



DETAIL "B"

INSERT MS24-28S (MCM469)
 VIEWED FROM WIRE SIDE OF CONNECTOR



PROPRIETARY INFORMATION
 THIS DRAWING IS THE PROPERTY
 OF AEROTECH, INC. AND IS
 SUBMITTED IN CONFIDENCE AND
 SHALL NOT BE REPRODUCED NOR
 COPIED NOR DISCLOSED TO OTHERS
 UNDER PENALTY OF LAW.



AEROTECH, INC. 101 Zeta Drive
 Pittsburgh, PA. 15238
 (412)963-7470 TWX710-795-3125

FRACTIONS	DECIMALS	ANGLES
0 TO 6 ± 1/32	.XX ± .01	± 0-30'
OVER 6 ± 1/16	.XXX ± .005	

DC OUTPUT CABLE
 DCS-MSO1

RMS FINISH	EXCEPT AS NOTED	SCALE	FILE NAME	SHEET
DRAWN	NTC	09/97	PART CODE	SIZE
CHECKED	WG	09/97	DCS-MSO1	C
APPD.	WG	09/97	630C1367-2	REV. C
			630C1367-2C1.dwg	1 OF 1