

REVISIONS				
REV.	ZONE	DESCRIPTION	DATE	DRAWN
A		CHANGED NOMENCLATURE, ADD WIRES 8 & 19, CHANGED TITLE	3/29/88	MP
B		ADDED ECN3000	11/5/97	NTC

CONNECTOR 25 PIN D MALE AMP #745496-2 (ECK786)  
BACKSHELL #17-1726-2 (ECK656)  
682A1023 (ECX413)  
#24 AWG UNLESS OTHERWISE NOTED

PIN	WIRE	SIGNAL
13	RED/YEL	CW LMT $\Delta$
12	WHT/BLU	CW/+ LMT
11	-	-
10	-	-
9	-	-
8	WHT/BLK/RED	-
7	WHT/GRY	MKR
6	WHT/BRN	MKR-N
5	-	-
4	-	-
3	#22 YEL	ENC +5V
2	-	-
1	SHIELD	SIG SHLD
14	WHT/RED	COS
15	WHT/ORN	COS-N
16	#22 PINK	LMT +5V
17	WHT/YEL	SIN
18	WHT/GRN	SIN-N
19	GRY	-
20	#22 BRN	LMT COM
21	#22 WHT/BLK	ENC COM
22	RED/BLK	HM LMT
23	RED/GRN	HOME LMT $\Delta$
24	WHT/VIO	CCW/- LMT $\Delta$
25	WHT/BLK/BRN	CCW LMT $\Delta$

682A1023 (ECX413)  
#24 AWG UNLESS OTHERWISE NOTED

SIGNAL	WIRE	PIN
SIN-N	WHT/GRN	H
CCW LMT	WHT/BLK/BRN	J
SIN	WHT/YEL	G
HOME LMT	RED/GRN	K
HM LMT	RED/BLK	W
CCW/- LMT	WHT/VIO	V
CW/+LMT	WHT/BLU	U
COS-N	WHT/ORN	F
MKR	WHT/GRY	L
MKR-N	WHT/BRN	X
SIG SHLD	SHIELD	Z
CW LMT	RED/YEL	T
COS	WHT/RED	E
ENC +5V	#22 YEL	M(1/2)
LMT +5V	#22 PINK	M(2/2)
MTR SHLD	SHIELD	Y
MTR A	#16 BLK	R *
FRM GND	#16 GRN	S *
LMT COM	#22 BRN	D(1/2)
ENC COM	#22 WHT/BLK	D(2/2)
MTR B	#16 YEL	N *
-	#16 BLU	P *
MTR B-N	#16 WHT	A *
-	#16 ORN	B *
MTR A-N	#16 RED	C *

BURNDY PLUG #UTG618-23SN (ECK135)  
CLAMP BURNDY #UTG18AC (ECK617)  
#28-22 SOCKETS BURNDY #SC24M-1TK6 (ECK402)  
CRIMP TOOL: BURNDY HANDLE W/HEAD ASSY N20RT-29  
OR BURNDY CRIMPER MODEL UTM-2R W/HEAD ASSY CM11G1R  
\* #20-16 SOCKETS BURNDY #SC16M-1TK6 (ECK403)  
CRIMP TOOL: BURNDY HANDLE W/HEAD ASSY N16RT-24

UNUSED WIRES:  
#24 TAN,VIO,GRY,WHT/BLK/RED

UNUSED WIRES:  
#16 ORN,BLU

FLYING LEAD	BRADY WIRE MARKER	WIRE	SIGNAL
W/SPADE-LUG	4	#16 WHT	MTR B-N
W/SPADE-LUG	5	#16 BLK	MTR A
W/SPADE-LUG	3	#16 YEL	MTR B
W/SPADE-LUG	6	#16 RED	MTR A-N
W/RING TONGUE	G	#16 GRN	FRM-GND
		SHIELD	MTR SHLD

LABEL SPADE-LUGS AND RING TONGUE WITH BRADY WIRE MARKERS AS SHOWN.

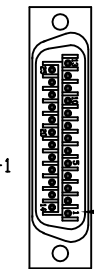
MOTOR BUNDLE OF 682A1023



ACTIVE HIGH SIGNALS FOR USE WITH PREVIOUS GENERATION AEROTECH CONTROLLERS (UNIDEX, UNIDEX 2, UNIDEX 3, UNIDEX 11, UNIDEX 12, UNIDEX 16)



STARTING CABLE LENGTH = 15 FT 5 IN



DETAIL "A"

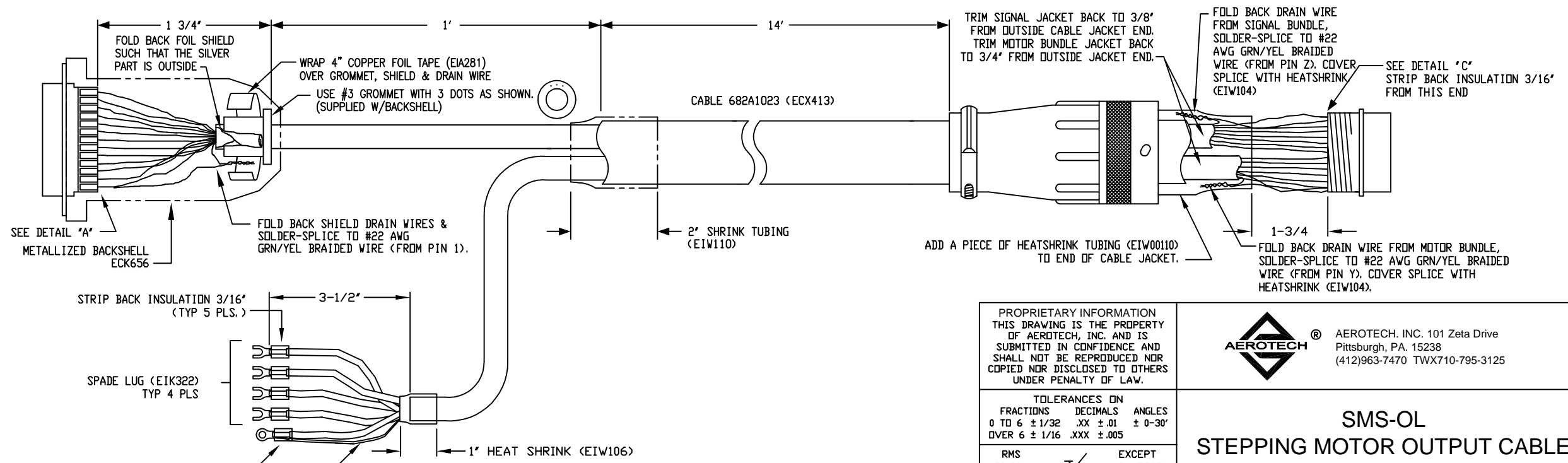
AMP PLUG 745496-2 (ECK786)  
VIEWED FROM WIRE SIDE OF CONNECTOR



DETAIL "B"

BURNDY PLUG UTG618-23SN (ECK135)  
VIEWED FROM WIRE SIDE OF CONNECTOR

FOR CRIMP TOOL USE AMP HANDLE ASSY 58074-1 WITH AMP HEAD ASSY 58063-2



PROPRIETARY INFORMATION  
THIS DRAWING IS THE PROPERTY  
OF AEROTECH, INC. AND IS  
SUBMITTED IN CONFIDENCE AND  
SHALL NOT BE REPRODUCED NOR  
COPIED NOR DISCLOSED TO OTHERS  
UNDER PENALTY OF LAW.



AEROTECH, INC. 101 Zeta Drive  
Pittsburgh, PA. 15238  
(412)963-7470 TWX710-795-3125

TOLERANCES ON		
FRACTIONS	DECIMALS	ANGLES
0 TO 6 ± 1/32	.XX ± .01	± 0-30'
OVER 6 ± 1/16	.XXX ± .005	

RMS FINISH	EXCEPT AS NOTED	

DRAWN	JFM	01/88
CHECKED	WG	11/97
APPD.	WG	11/97

**SMS-OL**  
**STEPPING MOTOR OUTPUT CABLE**

PART CODE	SIZE	REV.
SMS-OL	C	B
630C1372		
SCALE NTS	FILE NAME	SHEET
	630C1372B1.dwg	1 OF 1