

REVISIONS				
REV.	ZONE	DESCRIPTION	DATE	DRAWN
A		CHANGED NOMENCLATURE, ADD WIRES 8 & 19, CHANGED TITLE	3/29/88	MP
B		ADDED ECN3002	11/10/97	NTC

CONNECTOR 25 PIN D MALE AMP #745496-2 (ECK786)
BACKSHELL #17-1726-2 (ECK656)

PIN	WIRE	SIGNAL
13	RED/YEL	CW LMT
12	WHT/BLU	CW/+ LMT
11	-	-
10	-	-
9	-	-
8	WHT/BLK/RED	-
7	WHT/GRY	MKR
6	WHT/BRN	MKR-N
5	-	-
4	-	-
3	#22 YEL	ENC +5V
2	-	-
1	SHIELD	SIG SHLD
14	WHT/RED	COS
15	WHT/ORN	COS-N
16	#22 PINK	LMT +5V
17	WHT/YEL	SIN
18	WHT/GRN	SIN-N
19	GRY	SPARE
20	#22 BRN	LMT COM
21	#22 WHT/BLK	ENC COM
22	RED/BLK	HM LMT
23	RED/GRN	HOME LMT
24	WHT/VIO	CCW/- LMT
25	WHT/BLK/BRN	CCW LMT

FLYING LEAD	BRADY WIRE MARKER	WIRE	SIGNAL
W/SPADE-LUG	4	#16 WHT	MTR B-N
W/SPADE-LUG	5	#16 BLK	MTR A
W/SPADE-LUG	3	#16 YEL	MTR B
W/SPADE-LUG	6	#16 RED	MTR A-N
W/RING TONGUE	G	#16 GRN	FRM-GND
		SHIELD	MTR SHLD

682A1023 (ECX413)
#24 AWG UNLESS OTHERWISE NOTED

SIGNAL	WIRE	PIN
MKR-N	WHT/BRN	W
SIN-N	WHT/GRN	X
SIN	WHT/YEL	Y
SIG SHLD	SHIELD	Z
MKR	WHT/GRY	R
COS-N	WHT/ORN	S
COS	WHT/RED	T
LMT +5V	#22 PINK	U (1/2)
ENC +5V	#22 YEL	U (2/2)
MTR B-N	#16 WHT	V
HM LMT	RED/BLK	K
HOME LMT	RED/GRN	L
SPARE	GRY	M
ENC COM	#22 WHT/BLK	N (1/2)
LMT COM	#22 BRN	N (2/2)
-	#16 BLU	P
MTR B	#16 YEL	Q
CCW/- LMT	WHT/VIO	E
CCW LMT	WHT/BLK/BRN	F
MTR SHLD	SHIELD	G
-	#16 ORN	H
MTR A	#16 BLK	J
CW/+LMT	WHT/BLU	A
CW LMT	RED/YEL	B
FRM GND	#16 GRN	C
MTR A-N	#16 RED	D

STR. PLUG MS3106A-24 (MCM466) (STD)
ANGLE PLUG MS3108A-24 (DPT.)
ANGLE PLUG MS3108B-24 (MCM470) (DPT.)
INSERT MS24-28S (MCM469)
CLAMP 97-3057-1016 (MCM467)
BUSHING AN3055-28-16 (MCM474)

NOTE: KEY PLUG TO POSITION "W" ON INSERT

3

2

1

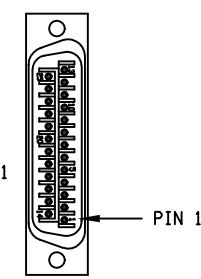
ACTIVE HIGH SIGNALS FOR USE WITH PREVIOUS GENERATION AEROTECH CONTROLLERS (UNIDEX, UNIDEX 2, UNIDEX 3, UNIDEX 11, UNIDEX 12, UNIDEX 16)

USE 2" LENGTHS OF THICK WALL HEATSHRINK TUBING TO BUILD UP CABLE DIAMETER FOR PROPER STRAIN RELIEFING. STRAIN RELIEFING MUST WITHSTAND 35 LB. PULL.

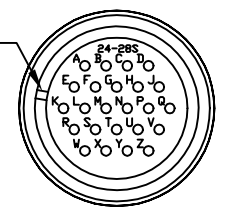
CUT THICK WALL HEATSHRINK TUBING WITH CABLE CUTTER SUCH THAT ENDS ARE PERPENDICULAR TO CABLE AND CUT IS SMOOTH. THICK WALL HEATSHRINK TUBING:
AMP # 53701-1 (EIW00112) MAX INSIDE DIA = .750" (EXPANDED), MIN INSIDE DIA = .220" (RECOVERED)
AMP # 53700-1 (EIW00113) MAX INSIDE DIA = .400" (EXPANDED), MIN INSIDE DIA = .150" (RECOVERED)

STARTING CABLE LENGTH = 15 FT 5 IN

REMOVE TAPE FROM INSERT SO PLUG CAN BE KEYED AT POSITION "W"



DETAIL "A"
AMP PLUG 745496-2 (ECK786)
VIEWED FROM WIRE SIDE OF CONNECTOR



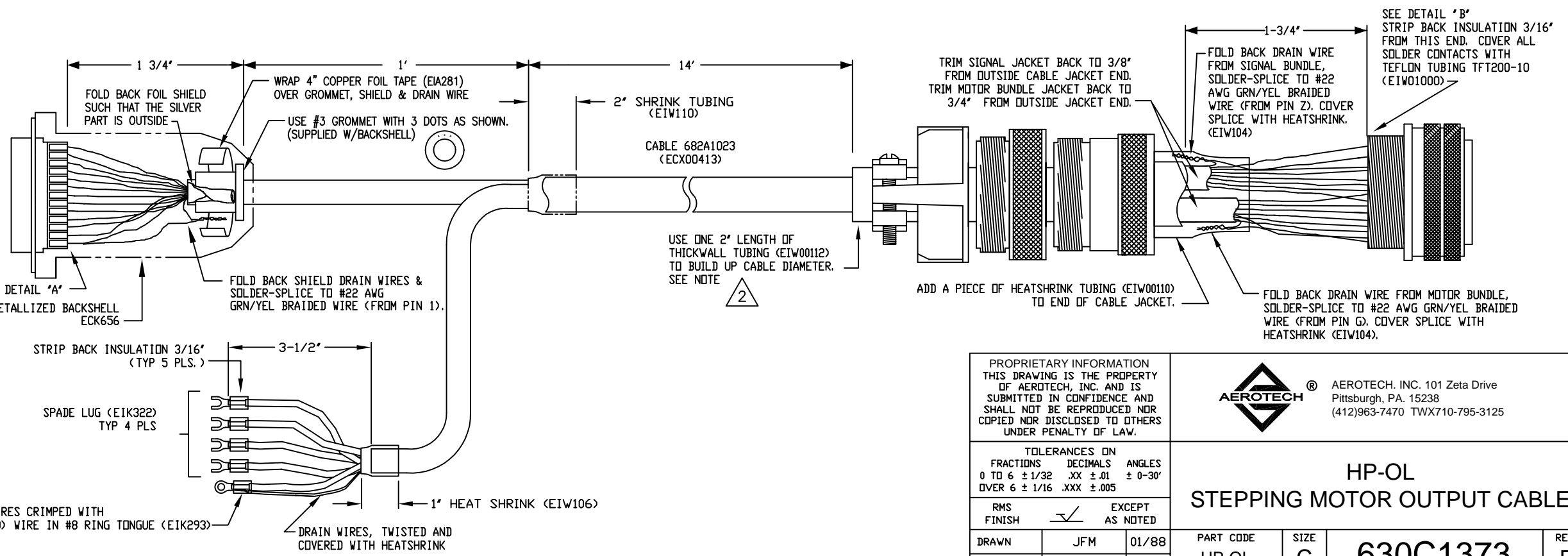
DETAIL "B"
INSERT MS24-28S (MCM469)
VIEWED FROM WIRE SIDE OF CONNECTOR

FOR CRIMP TOOL USE AMP HANDLE ASSY 58074-1 WITH AMP HEAD ASSY 58063-2

UNUSED WIRES:
#24 TAN,VIO,GRY,WHT/BLK/RED

UNUSED WIRES:
#16 ORN,BLU

MOTOR BUNDLE OF 682A1023



PROPRIETARY INFORMATION
THIS DRAWING IS THE PROPERTY OF AEROTECH, INC. AND IS SUBMITTED IN CONFIDENCE AND SHALL NOT BE REPRODUCED NOR COPIED NOR DISCLOSED TO OTHERS UNDER PENALTY OF LAW.



AEROTECH, INC. 101 Zeta Drive
Pittsburgh, PA. 15238
(412)963-7470 TWX710-795-3125

TOLERANCES ON		
FRACTIONS	DECIMALS	ANGLES
0 TO 6 ± 1/32	.XX ± .01	± 0-30'
OVER 6 ± 1/16	.XXX ± .005	

RMS FINISH EXCEPT AS NOTED

DRAWN	JFM	01/88
CHECKED	WG	11/97
APPD.	WG	11/97

HP-OL
STEPPING MOTOR OUTPUT CABLE

PART CODE	SIZE	REV.
HP-OL	C	B

630C1373

SCALE	FILE NAME	SHEET
NTS	630C1373B1.dwg	1 OF 1