

| REVISIONS | | | | |
|-----------|------|-------------------------------------|----------|-------|
| REV. | ZONE | DESCRIPTION | DATE | DRAWN |
| A | | ADDED EXTENSION BUSHING AND GROMMET | 1/89 | MP |
| B | | ADDED ECN3004 | 11/10/97 | NTC |

CONNECTOR 25 PIN D MALE AMP #745496-2 (ECK786)
BACKSHELL #17-1726-2 (ECK656)

| PIN | WIRE | SIGNAL |
|-----|-------------|-----------|
| 13 | RED/YEL | CW LMT |
| 12 | WHT/BLU | CW/+ LMT |
| 11 | - | - |
| 10 | - | - |
| 9 | - | - |
| 8 | - | - |
| 7 | WHT/GRY | MKR |
| 6 | WHT/BRN | MKR-N |
| 5 | - | - |
| 4 | - | - |
| 3 | #22 YEL | ENC +5V |
| 2 | - | - |
| 1 | SHIELD | SIG SHLD |
| 14 | WHT/RED | COS |
| 15 | WHT/ORN | COS-N |
| 16 | #22 PINK | LMT +5V |
| 17 | WHT/YEL | SIN |
| 18 | WHT/GRN | SIN-N |
| 19 | GRY | SPARE |
| 20 | #22 BRN | LMT COM |
| 21 | #22 WHT/BLK | ENC COM |
| 22 | RED/BLK | HM LMT |
| 23 | RED/GRN | HOME LMT |
| 24 | WHT/VIO | CCW/- LMT |
| 25 | WHT/BLK/BRN | CCW LMT |

| PIN | WIRE | SIGNAL | |
|-----|---------|----------|----------|
| | | BIPOLAR | UNIPOLAR |
| K | #16 BLU | - | MTR B' |
| J | #16 BLK | MTR A | MTR ACT |
| H | #16 YEL | MTR B | MTR B |
| G | #16 RED | MTR A-N | MTR A' |
| F | SHIELD | MTR SHLD | MTR SHLD |
| E | #16 GRN | FRM-GND | FRM-GND |
| D | #16 WHT | MTR B-N | MTR BCT |
| C | #16 DRN | - | MTR A |
| B | - | - | - |
| A | - | - | - |

PLUG MS3106A-18 (MCM475)
INSERT MS18-19P (MCM476)
BUSHING AN3055-18-10 (MCM481)
CLAMP 97-3057-1010 (MCM477)

682A1023 (ECX413)
#24 AWG UNLESS OTHERWISE NOTED

| SIGNAL | WIRE | PIN | |
|-----------|-------------|-------------|---|
| MKR-N | WHT/BRN | W | |
| SIN-N | WHT/GRN | X | |
| SIN | WHT/YEL | Y | |
| SIG SHLD | SHIELD | Z | |
| MKR | WHT/GRY | R | |
| COS-N | WHT/ORN | S | |
| COS | WHT/RED | T | |
| LMT +5V | #22 PINK | U (1/2) | |
| ENC +5V | #22 YEL | U (2/2) | |
| MTR B-N | #16 WHT | V | |
| HM LMT | RED/BLK | K | |
| HOME LMT | RED/GRN | L | |
| SPARE | GRY | M | |
| ENC COM | #22 WHT/BLK | N (1/2) | |
| LMT COM | #22 BRN | N (2/2) | |
| - | MTR B' | #16 BLU | P |
| MTR B | MTR B | #16 YEL | Q |
| CCW/- LMT | WHT/VIO | WHT/VIO | E |
| CCW LMT | WHT/BLK/BRN | WHT/BLK/BRN | F |
| MTR SHLD | MTR SHLD | SHIELD | G |
| - | MTR A | #16 ORN | H |
| MTR A | MTR ACT | #16 BLK | J |
| CW/+LMT | WHT/BLU | WHT/BLU | A |
| CW LMT | RED/YEL | RED/YEL | B |
| FRM GND | FRM GND | #16 GRN | C |
| MTR A-N | MTR A' | #16 RED | D |

STR. PLUG MS3106A-24 (MCM466) (STD)
ANGLE PLUG MS3108A-24 (DPT.)
ANGLE PLUG MS3108B-24 (MCM470) (DPT.)
INSERT MS24-28S (MCM469)
CLAMP 97-3057-1016 (MCM467)
BUSHING AN3055-28-16 (MCM474)

NOTE: KEY PLUG TO POSITION 'W'
ON INSERT

3

2

1

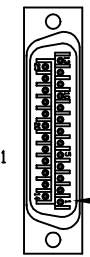
ACTIVE HIGH SIGNALS FOR USE WITH PREVIOUS GENERATION AEROTECH CONTROLLERS (UNIDEX, UNIDEX 2, UNIDEX 3, UNIDEX 11, UNIDEX 12, UNIDEX 16)

USE 2' LENGTHS OF THICK WALL HEATSHRINK TUBING TO BUILD UP CABLE DIAMETER FOR PROPER STRAIN RELIEFING. STRAIN RELIEFING MUST WITHSTAND 35 LB. PULL.

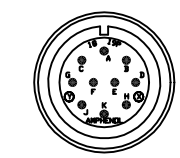
CUT THICK WALL HEATSHRINK TUBING WITH CABLE CUTTER SUCH THAT ENDS ARE PERPENDICULAR TO CABLE AND CUT IS SMOOTH.

THICK WALL HEATSHRINK TUBING:
AMP # 53701-1 (EIW00112) MAX INSIDE DIA = .750' (EXPANDED), MIN INSIDE DIA = .220' (RECOVERED)
AMP # 53700-1 (EIW00113) MAX INSIDE DIA = .400' (EXPANDED), MIN INSIDE DIA = .150' (RECOVERED)

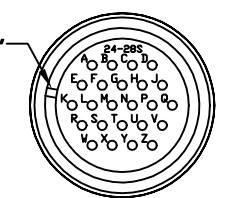
STARTING CABLE LENGTH = 15 FT 5 IN



DETAIL "A"
AMP PLUG 745496-2 (ECK786)
VIEWED FROM WIRE SIDE OF CONNECTOR



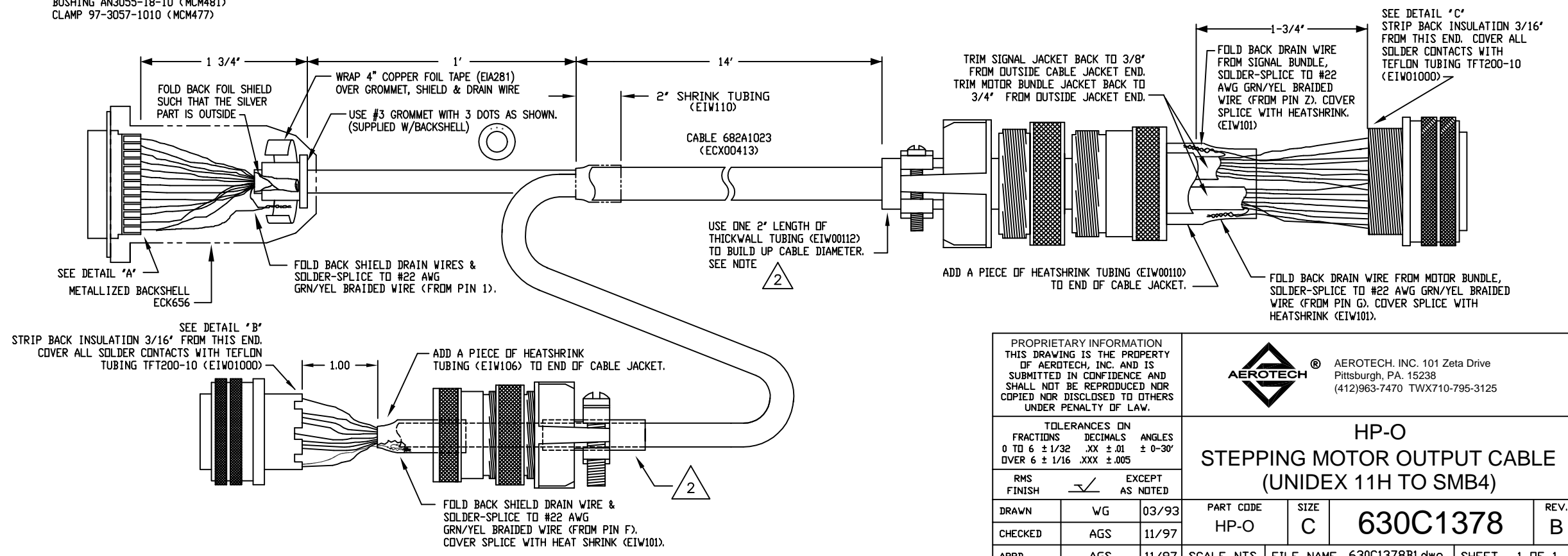
DETAIL "B"
INSERT MS18-19P (MCM476)
VIEWED FROM WIRE SIDE OF CONNECTOR



DETAIL "C"
INSERT MS24-28S (MCM469)
VIEWED FROM WIRE SIDE OF CONNECTOR

MOTOR BUNDLE OF 682A1023

FOR CRIMP TOOL USE AMP HANDLE ASSY 58074-1
WITH AMP HEAD ASSY 58063-2



PROPRIETARY INFORMATION
THIS DRAWING IS THE PROPERTY
OF AEROTECH, INC. AND IS
SUBMITTED IN CONFIDENCE AND
SHALL NOT BE REPRODUCED NOR
COPIED NOR DISCLOSED TO OTHERS
UNDER PENALTY OF LAW.



AEROTECH, INC. 101 Zeta Drive
Pittsburgh, PA. 15238
(412)963-7470 TWX710-795-3125

| RMS FINISH | TOLERANCES ON | |
|-----------------|---------------|-------------|
| | FRACTIONS | DECIMALS |
| 0 TO 6 | ± 1/32 | .XX ± .01 |
| OVER 6 | ± 1/16 | .XXX ± .005 |
| ANGLES | ± 0-30' | |
| EXCEPT AS NOTED | | |

| HP-O | | | |
|-----------------------------|----------------|-------|--------|
| STEPPING MOTOR OUTPUT CABLE | | | |
| (UNIDEX 11H TO SMB4) | | | |
| PART CODE | SIZE | REV. | |
| HP-O | C | B | |
| 630C1378 | | | |
| SCALE NTS | FILE NAME | SHEET | 1 OF 1 |
| | 630C1378B1.dwg | | |