

REVISIONS				
REV.	ZONE	DESCRIPTION	DATE	DRAWN
A		ADDED EXTENSION BUSHING AND GROMMET	01/89	MP
B		ADDED ECN3011	11/10/97	NTC

CONNECTOR 25 PIN D MALE AMP #745496-2 (ECK786)
BACKSHELL #17-1726-2 (ECK656)
682A1023 (ECX413)
#24 AWG UNLESS OTHERWISE NOTED

PIN	WIRE	SIGNAL
13	RED/YEL	CW LMT
12	WHT/BLU	CW/+ LMT
11	-	-
10	-	-
9	-	-
8	-	-
7	WHT/GRY	MKR
6	WHT/BRN	MKR-N
5	-	-
4	-	-
3	#22 YEL	ENC +5V
2	-	-
1	SHIELD	SIG SHLD

PIN	WIRE	SIGNAL	
		BIPOLAR	UNIPOLAR
K	#16 BLU	-	MTR B'
J	#16 BLK	MTR A	MTR ACT
H	#16 YEL	MTR B	MTR B
G	#16 RED	MTR A-N	MTR A'
F	SHIELD	MTR SHLD	MTR SHLD
E	#16 GRN	FRM-GND	FRM-GND
D	#16 WHT	MTR B-N	MTR BCT
C	#16 ORN	-	MTR A
B	-	-	-
A	-	-	-

PLUG MS3106A-18 (MCM475)
INSERT MS18-19P (MCM476)
BUSHING AN3055-18-10 (MCM481)
CLAMP 97-3057-1010 (MCM477)

682A1023 (ECX413)
#24 AWG UNLESS OTHERWISE NOTED

SIGNAL	WIRE	PIN
SIN-N	WHT/GRN	H
CCW LMT	WHT/BLK/BRN	J
SIN	WHT/YEL	G
HOME LMT	RED/GRN	K
HM LMT	RED/BLK	W
CCW/- LMT	WHT/VIO	V
CW/+LMT	WHT/BLU	U
COS-N	WHT/ORN	F
MKR	WHT/GRY	L
MKR-N	WHT/BRN	X
SIG SHLD	SHIELD	Z
CW LMT	RED/YEL	T
COS	WHT/RED	E
ENC +5V	#22 YEL	M(1/2)
LMT +5V	#22 PINK	M(2/2)
MTR SHLD	SHIELD	Y
MTR A	MTR ACT	#16 BLK R *
FRM GND	FRM GND	#16 GRN S *
LMT COM	#22 BRN	D(1/2)
ENC COM	#22 WHT/BLK	D(2/2)
MTR B	MTR B	#16 YEL N *
-	MTR B'	#16 BLU P *
MTR B-N	MTR BCT	#16 WHT A *
-	MTR A	#16 ORN B *
MTR A-N	MTR A'	#16 RED C *

BIPOLAR UNIPOLAR

BURNDY PLUG #UTG618-23SN (ECK135)
CLAMP BURNDY #UTG18AC (ECK617)
#28-22 SOCKETS BURNDY #SC24M-1TK6 (ECK402)
CRIMP TOOL: BURNDY HANDLE W/HEAD ASSY N20RT-29
OR BURNDY CRIMPER MODEL UTM-2R W/HEAD ASSY CM11G1R
* #20-16 SOCKETS BURNDY #SC16M-1TK6 (ECK403)
CRIMP TOOL: BURNDY HANDLE W/HEAD ASSY N16RT-24

3
2
1

ACTIVE HIGH SIGNALS FOR USE WITH PREVIOUS GENERATION AEROTECH CONTROLLERS (UNIDEX, UNIDEX 2, UNIDEX 3, UNIDEX 11, UNIDEX 12, UNIDEX 16)

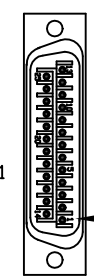
USE 2" LENGTHS OF THICK WALL HEATSHRINK TUBING TO BUILD UP CABLE DIAMETER FOR PROPER STRAIN RELIEFING. STRAIN RELIEFING MUST WITHSTAND 35 LB. PULL.

CUT THICK WALL HEATSHRINK TUBING WITH CABLE CUTTER SUCH THAT ENDS ARE PERPENDICULAR TO CABLE AND CUT IS SMOOTH. THICK WALL HEATSHRINK TUBING:
AMP # 53701-1 (EIW00112) MAX INSIDE DIA = .750" (EXPANDED), MIN INSIDE DIA = .220" (RECOVERED)
AMP # 53700-1 (EIW00113) MAX INSIDE DIA = .400" (EXPANDED), MIN INSIDE DIA = .150" (RECOVERED)

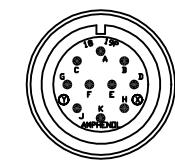
STARTING CABLE LENGTH = 15 FT 5 IN

MOTOR BUNDLE OF 682A1023

FOR CRIMP TOOL USE AMP HANDLE ASSY 58074-1 WITH AMP HEAD ASSY 58063-2



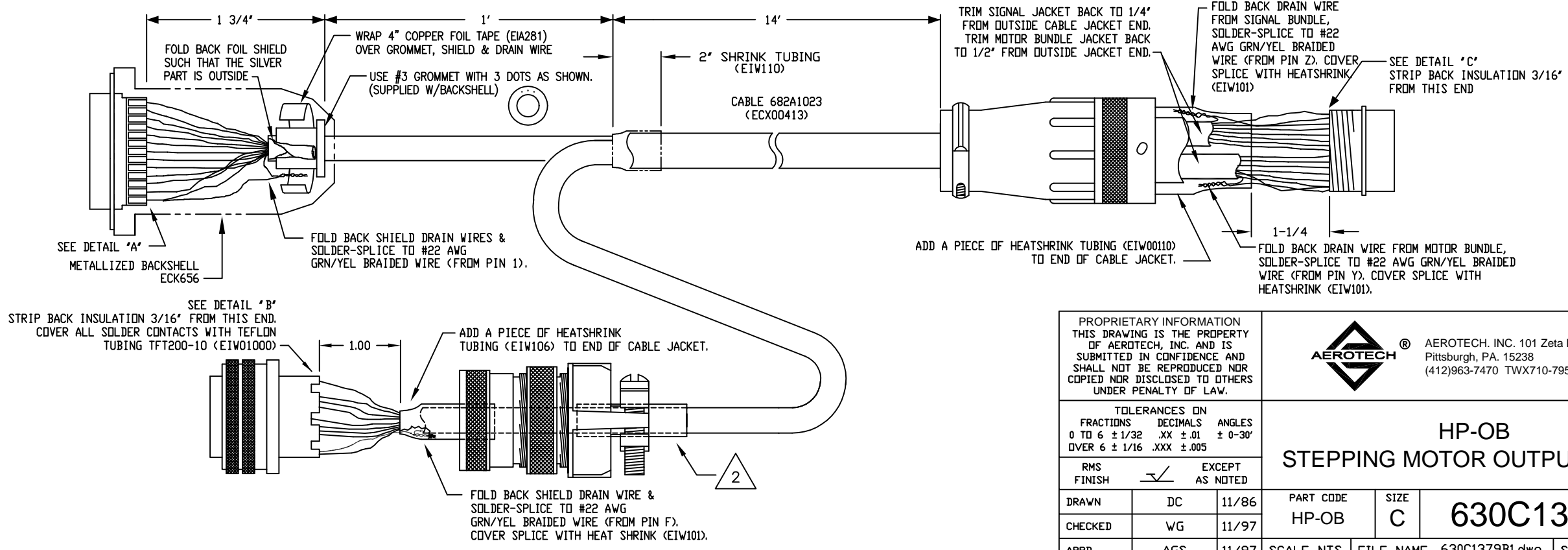
DETAIL "A"
AMP PLUG 745496-2 (ECK786)
VIEWED FROM WIRE SIDE OF CONNECTOR



DETAIL "B"
INSERT MS18-19P (MCM476)
VIEWED FROM WIRE SIDE OF CONNECTOR



DETAIL "C"
BURNDY PLUG UTG618-23SN (ECK135)
VIEWED FROM WIRE SIDE OF CONNECTOR



PROPRIETARY INFORMATION THIS DRAWING IS THE PROPERTY OF AEROTECH, INC. AND IS SUBMITTED IN CONFIDENCE AND SHALL NOT BE REPRODUCED NOR COPIED NOR DISCLOSED TO OTHERS UNDER PENALTY OF LAW.

AEROTECH® AEROTECH, INC. 101 Zeta Drive
Pittsburgh, PA. 15238
(412)963-7470 TWX710-795-3125

TOLERANCES ON FRACTIONS DECIMALS ANGLES
0 TO 6 ± 1/32 .XX ± .01 ± 0-30'
OVER 6 ± 1/16 .XXX ± .005

RMS FINISH ✓ EXCEPT AS NOTED

HP-OB STEPPING MOTOR OUTPUT CABLE

DRAWN	DC	11/86	PART CODE	SIZE	REV.
CHECKED	WG	11/97	HP-OB	C	B
APPD.	AGS	11/97	SCALE NTS	FILE NAME 630C1379B1.dwg	SHEET 1 OF 1