

REVISIONS				
REV.	ZONE	DESCRIPTION	DATE	DRAWN
A		NO CHANGE THIS SHEET	2/6	EJB
B		ADDED ECN 2832	8/21/97	NTC
C		ADDED ECN7058	05/03	JRF

AMP PLUG #745496-2 (ECK786)
BACKSHELL #17-1726-2 (ECK656)
682A1031 (ECX445)
#24 AWG UNLESS OTHERWISE NOTED

PIN	WIRE	SIGNAL
13	ORN	BRK-
12	WHT	CW/+ LMT
11	-	-
10	-	-
9	-	-
8	WHT/VIO	TACH -
7	BRN	MKR
6	BLK	MKR-N
5	-	-
4	-	-
3	#22 WHT/BRN	ENC +5V
2	-	-
1	SHIELD	SIG SHLD

FLYING LEAD	WIRE	SIGNAL
(1/2)	RED	MTR+
(2/2)	ORN	MTR+

FLYING LEAD	WIRE	SIGNAL
(1/2)	YEL	MTR-
(2/2)	BLU	MTR-

#8 RING TONGUE	WIRE	SIGNAL
(1/3)	SHIELD	MTR SHLD
(2/3)	GRN	FRM GND
(3/3)	WHT	FRM GND

UNUSED WIRES:
YEL

#24 AWG UNLESS OTHERWISE NOTED

SIGNAL	WIRE	PIN
LMT +5V	#22 WHT/BLU	W
LMT COM	#22 WHT/GRN	X
TACH+	WHT/RED	Y
TACH-	WHT/VIO	Z
CW/+ LMT	WHT	R
CCW/- LMT	GRY	S
HM LMT	PINK	T
BRK-	ORN	U
MTR-	#20 YEL	V
COS-N	VIO	K
SIN-N	RED	L
MKR-N	BLK	M
FRM GND	#20 GRN	N(1/2)
FRM GND	#20 WHT	N(2/2)
MTR+	#20 ORN	P
MTR-	#20 BLU	Q
COS	WHT/BLK	E
SIN	GRN	F
MKR	BRN	G
BRK+	BLU	H
MTR+	#20 RED	J
ENC+5V	#22 WHT/BRN	A
ENC COM	#22 WHT/YEL	B
SIG SHLD	SHIELD	C
MTR SHLD	SHIELD	D

STR. PLUG MS3106A-24 (MCM466) (STD)
ANGLE PLUG MS3108A-24 (DPT.)
ANGLE PLUG MS3108B-24 (MCM470) (DPT.)
INSERT MS24-28S (MCM469)
CLAMP 97-3057-1016 (MCM467)
BUSHING AN3055-28-16 (MCM474)

2

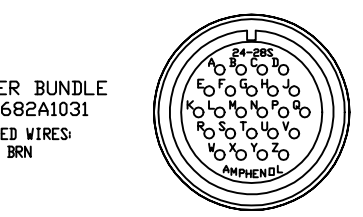
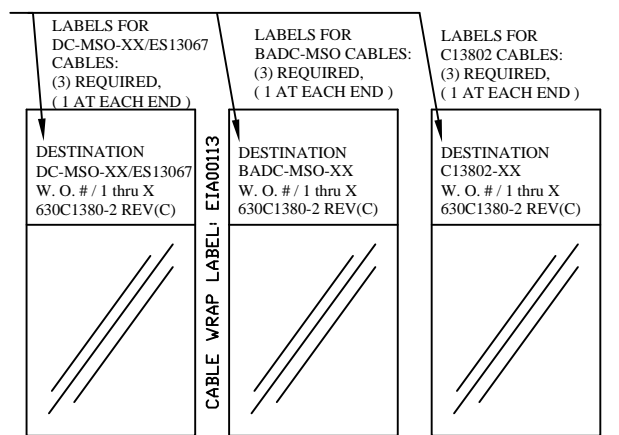
USE 2" LENGTHS OF THICK WALL HEATSHRINK TUBING TO BUILD UP CABLE DIAMETER FOR PROPER STRAIN RELIEFING. STRAIN RELIEFING MUST WITHSTAND 35 LB. PULL.

CUT THICK WALL HEATSHRINK TUBING WITH CABLE CUTTER SUCH THAT ENDS ARE PERPENDICULAR TO CABLE AND CUT IS SMOOTH. THICK WALL HEATSHRINK TUBING:
AMP # 53701-1 (EIW00112) MAX INSIDE DIA = .750" (EXPANDED), MIN INSIDE DIA = .220" (RECOVERED)
AMP # 53700-1 (EIW00113) MAX INSIDE DIA = .400" (EXPANDED), MIN INSIDE DIA = .150" (RECOVERED)

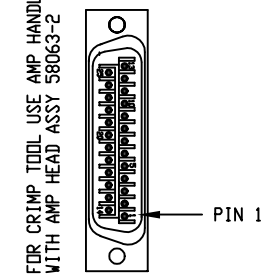
1

STARTING CABLE LENGTH = 18 FT

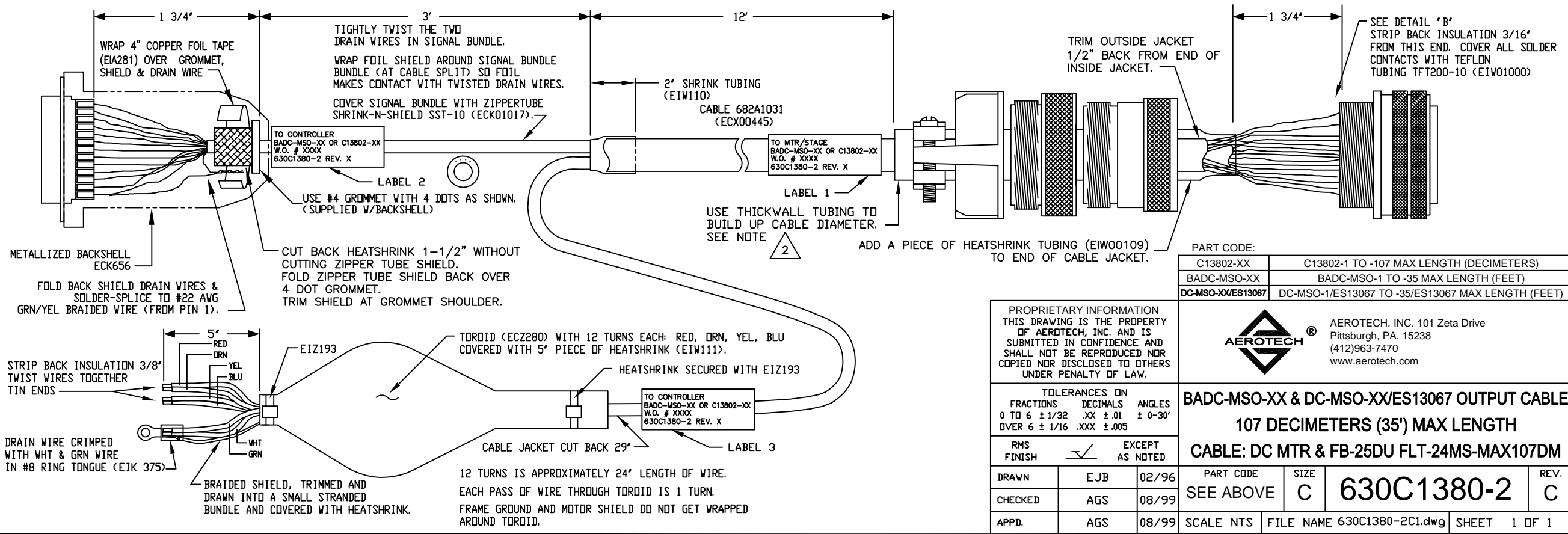
SEE LABELS 1, 2 & 3 FOR DESTINATION



DETAIL "B"
INSERT MS24-28S (MCM469)
VIEWED FROM WIRE SIDE OF CONNECTOR



DETAIL "A"
AMP PLUG 745496-2 (ECK786)
VIEWED FROM WIRE SIDE OF CONNECTOR



PART CODE:	
C13802-XX	C13802-1 TO -107 MAX LENGTH (DECIMETERS)
BADC-MSO-XX	BADC-MSO-1 TO -35 MAX LENGTH (FEET)
DC-MSO-XX/ES13067	DC-MSO-1/ES13067 TO -35/ES13067 MAX LENGTH (FEET)

PROPRIETARY INFORMATION
THIS DRAWING IS THE PROPERTY OF AEROTECH, INC. AND IS SUBMITTED IN CONFIDENCE AND SHALL NOT BE REPRODUCED NOR COPIED NOR DISCLOSED TO OTHERS UNDER PENALTY OF LAW.



AEROTECH, INC. 101 Zeta Drive
Pittsburgh, PA. 15238
(412)963-7470
www.aerotech.com

TOLERANCES ON		
FRACTIONS	DECIMALS	ANGLES
0 TO 6 ± 1/32	.XX ± .01	± 0-30'
OVER 6 ± 1/16	.XXX ± .005	

RMS FINISH	EXCEPT AS NOTED
DRAWN	EJB 02/96
CHECKED	AGS 08/99
APPD.	AGS 08/99

BADC-MSO-XX & DC-MSO-XX/ES13067 OUTPUT CABLE			
107 DECIMETERS (35') MAX LENGTH			
CABLE: DC MTR & FB-25DU FLT-24MS-MAX107DM			
PART CODE	SIZE	REV.	
SEE ABOVE	C	C	
SCALE NTS	FILE NAME 630C1380-2C1.dwg	SHEET 1 OF 1	